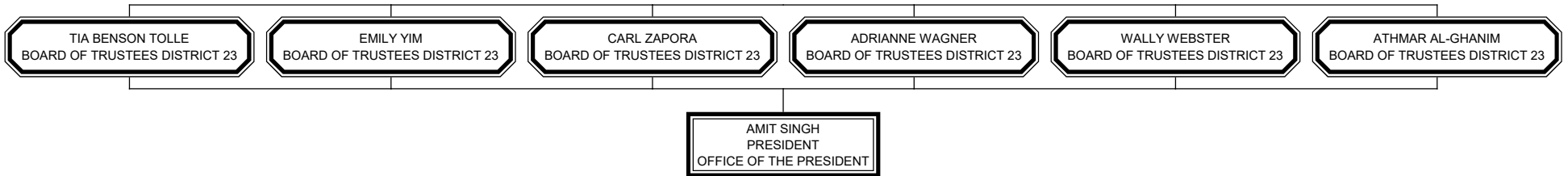


EDMONDS COMMUNITY COLLEGE  
BOARD OF TRUSTEES



# EDMONDS COMMUNITY COLLEGE

## OFFICE OF THE PRESIDENT

AMIT SINGH  
PRESIDENT  
OFFICE OF THE PRESIDENT

KRISTEN NYQUIST  
EXEC ASST TO THE PRESIDENT  
OFFICE OF THE PRESIDENT

YVONNE TERRELL-POWELL  
VP FOR EQUITY & INCLUSION  
EQUITY AND INCLUSION

JIM MULIK  
SR EX DIR INSTIT EFF/GRNTS  
INSTITUTIONAL EFFECTIVENESS

DANIELLE CARNES  
VP INNOV&STRATEGIC PARTNSP  
STRATEGIC INITIATIVES OFFICE

MUSHKA ROHANI  
EXECUTIVE DIRECTOR OF HR  
EXEC DIRECTOR OF HR OFFICE

GREGORY HINTON  
VP FOR FINANCE/OPERATIONS  
VICE PRES OF FINANCE/OPERATION

EVA SMITH  
CHIEF INFORMATION OFFICER  
INFORMATION TECHNOLOGY

KIMBERLY CHAPMAN  
INTERIM VP FOR INSTRUCTION  
HUMANITIES/SOCIAL SCIENCES DIV

CHRISTINA CASTORENA  
VP STUDENT SERVICES  
VICE PRES STU SERVICES OFFICE

# EDMONDS COMMUNITY COLLEGE

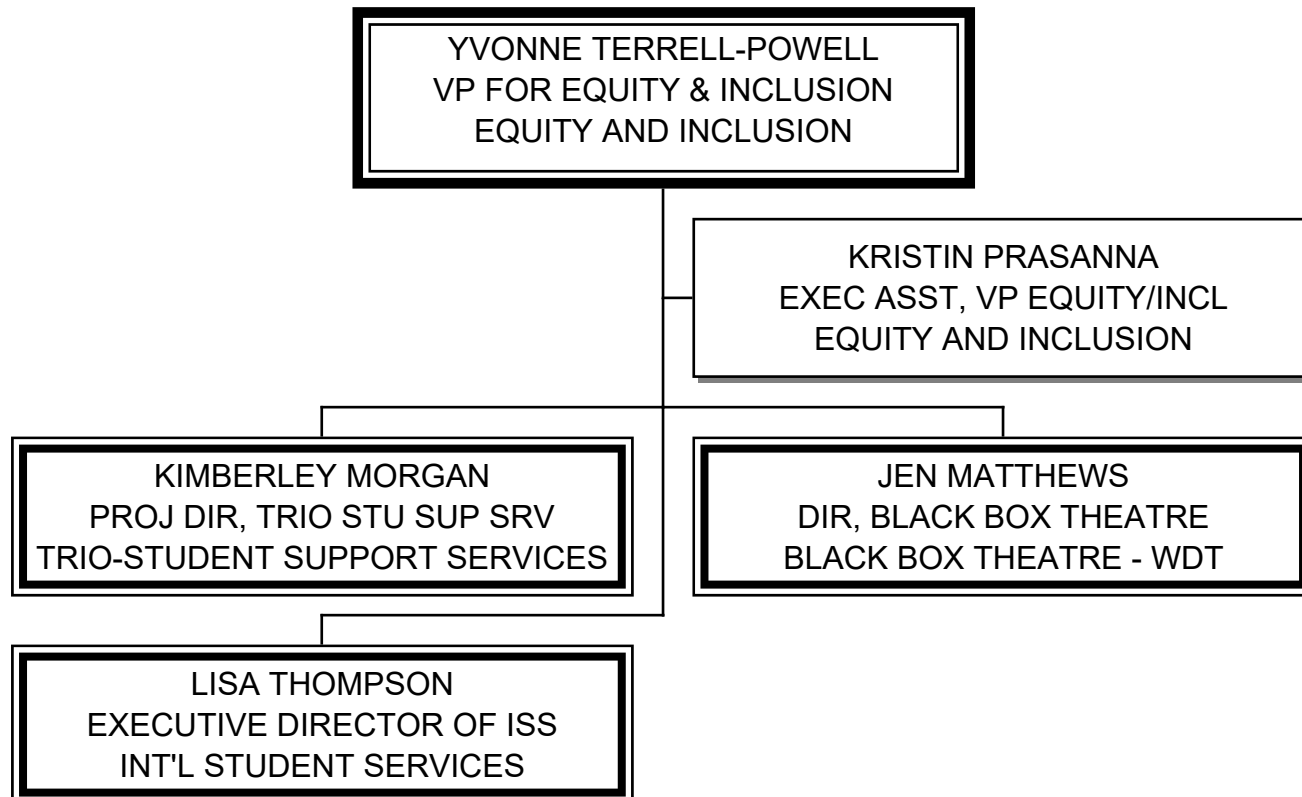
## OFFICE OF THE PRESIDENT

KRISTEN NYQUIST  
EXEC ASST TO THE PRESIDENT  
OFFICE OF THE PRESIDENT

SUSAN HOLCOMB  
ADMINISTRATIVE ASSISTANT 4  
OFFICE OF THE PRESIDENT

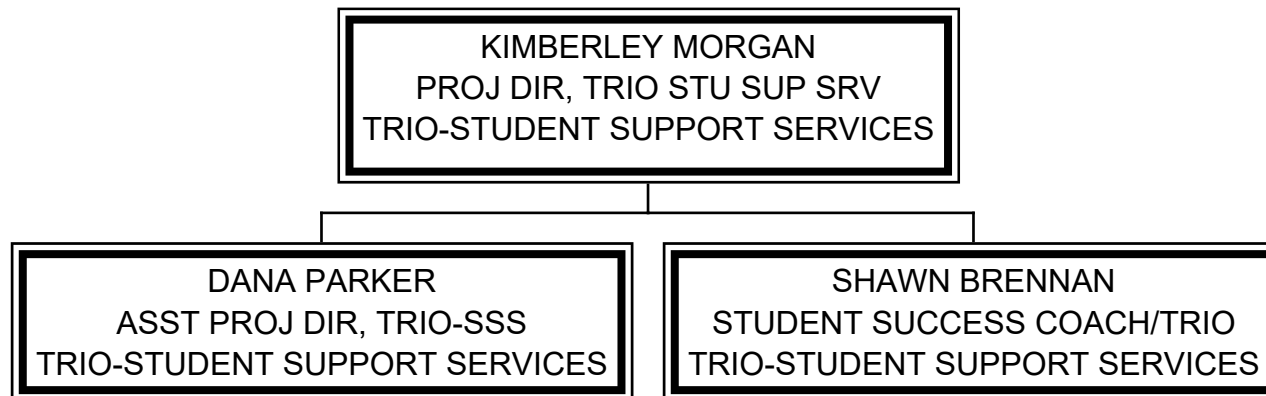
# EDMONDS COMMUNITY COLLEGE

## EQUITY AND INCLUSION



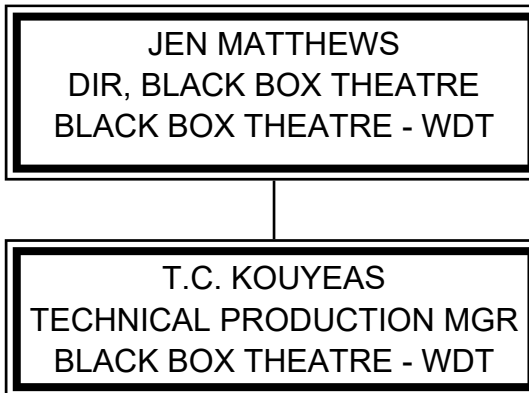
# EDMONDS COMMUNITY COLLEGE

## TRIO-STUDENT SUPPORT SERVICES



# EDMONDS COMMUNITY COLLEGE

## BLACK BOX THEATRE ~ WDT



**EDMONDS COMMUNITY COLLEGE**  
**INT'L STUDENT SERVICES**

LISA THOMPSON  
EXECUTIVE DIRECTOR OF ISS  
INT'L STUDENT SERVICES

STACEY CANTAVE  
ASSOC DIR, INT'L STU SERV  
INT'L STUDENT SERVICES

BINEE PARK  
ASSOC DIR, INT'L STU SERV  
INT'L STUDENT SERVICES

ANNE RICHARDSON  
ASSOC DIR, INT'L STU SERV  
INT'L STUDENT SERVICES

MANDY MINO-CUASAY  
ASSOC DIR, TRANS ADV - ISS  
INT'L STUDENT SERVICES

TAKAKO CROCE  
ASSOC DIR, INT'L STU SERV  
INT'L STUDENT SERVICES

ELIZABETH LYON  
ASSOC DIR, TRANSFER ADV  
INT'L STUDENT SERVICES

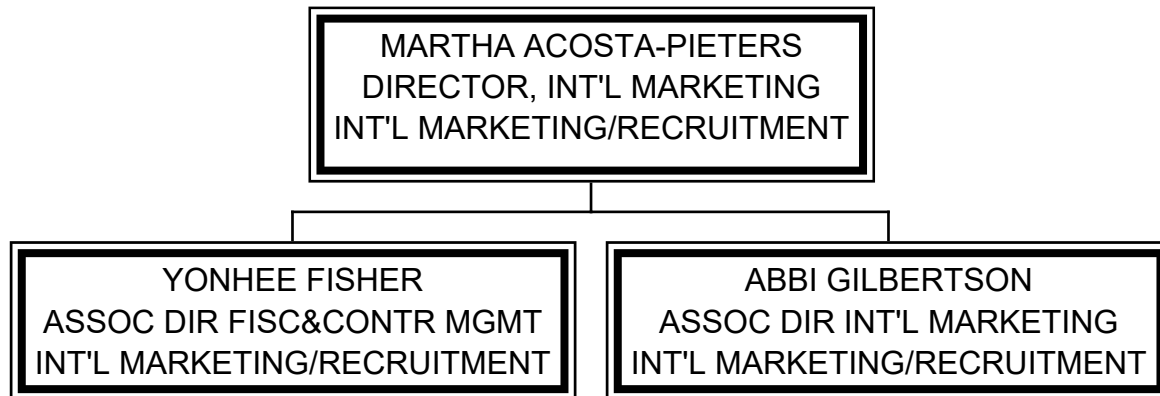
MELISSA RANDOLF  
PROGRAMMING COORD - ISS  
INT'L STUDENT SERVICES

MARTHA ACOSTA-PIETERS  
DIRECTOR, INT'L MARKETING  
INT'L MARKETING/RECRUITMENT

THALIA SAPLAD  
DIRECTOR, INT'L OUTREACH  
INT'L MARKETING/RECRUITMENT

# EDMONDS COMMUNITY COLLEGE

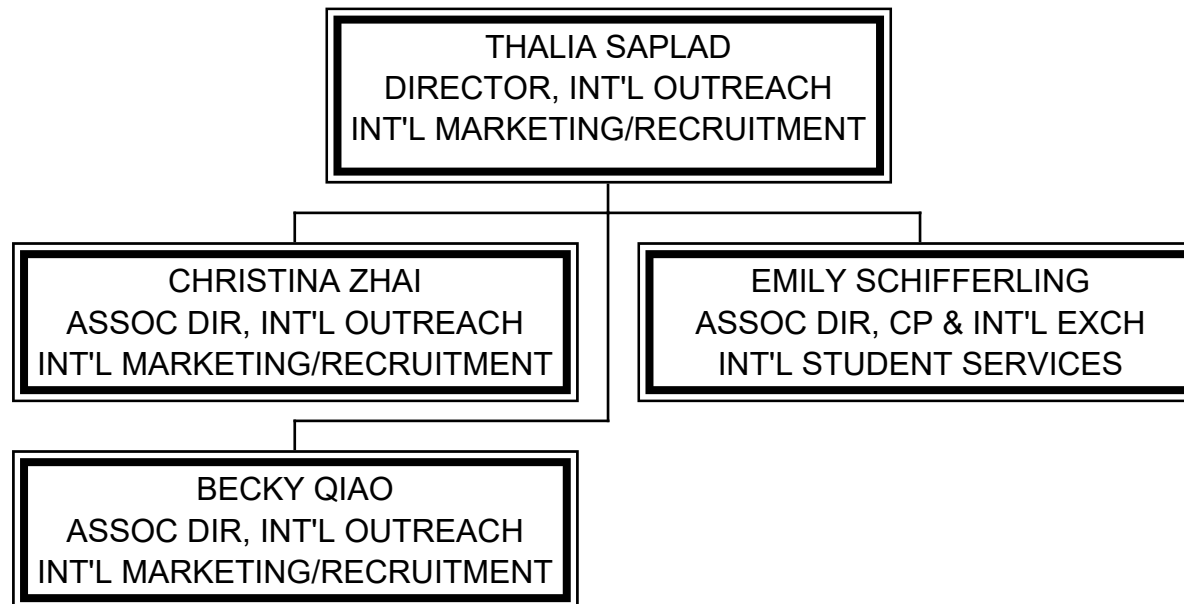
## INT'L MARKETING/RECRUITMENT





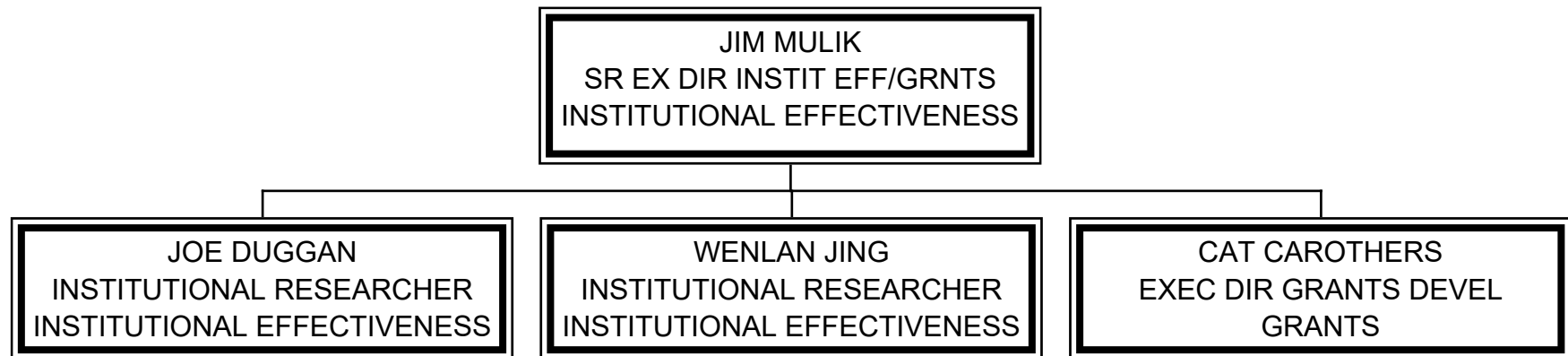
# EDMONDS COMMUNITY COLLEGE

## INT'L MARKETING/RECRUITMENT

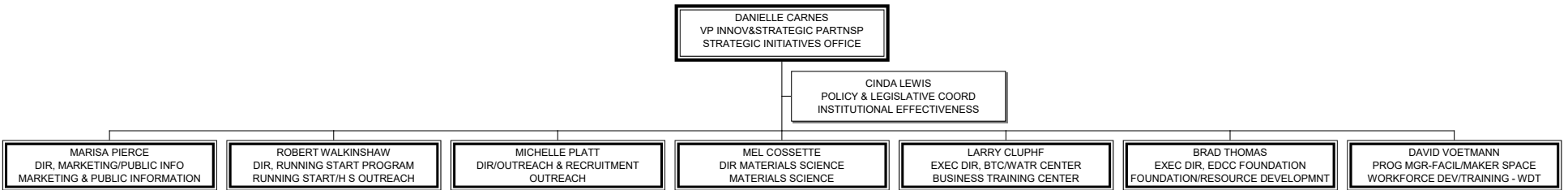


# EDMONDS COMMUNITY COLLEGE

## INSTITUTIONAL EFFECTIVENESS

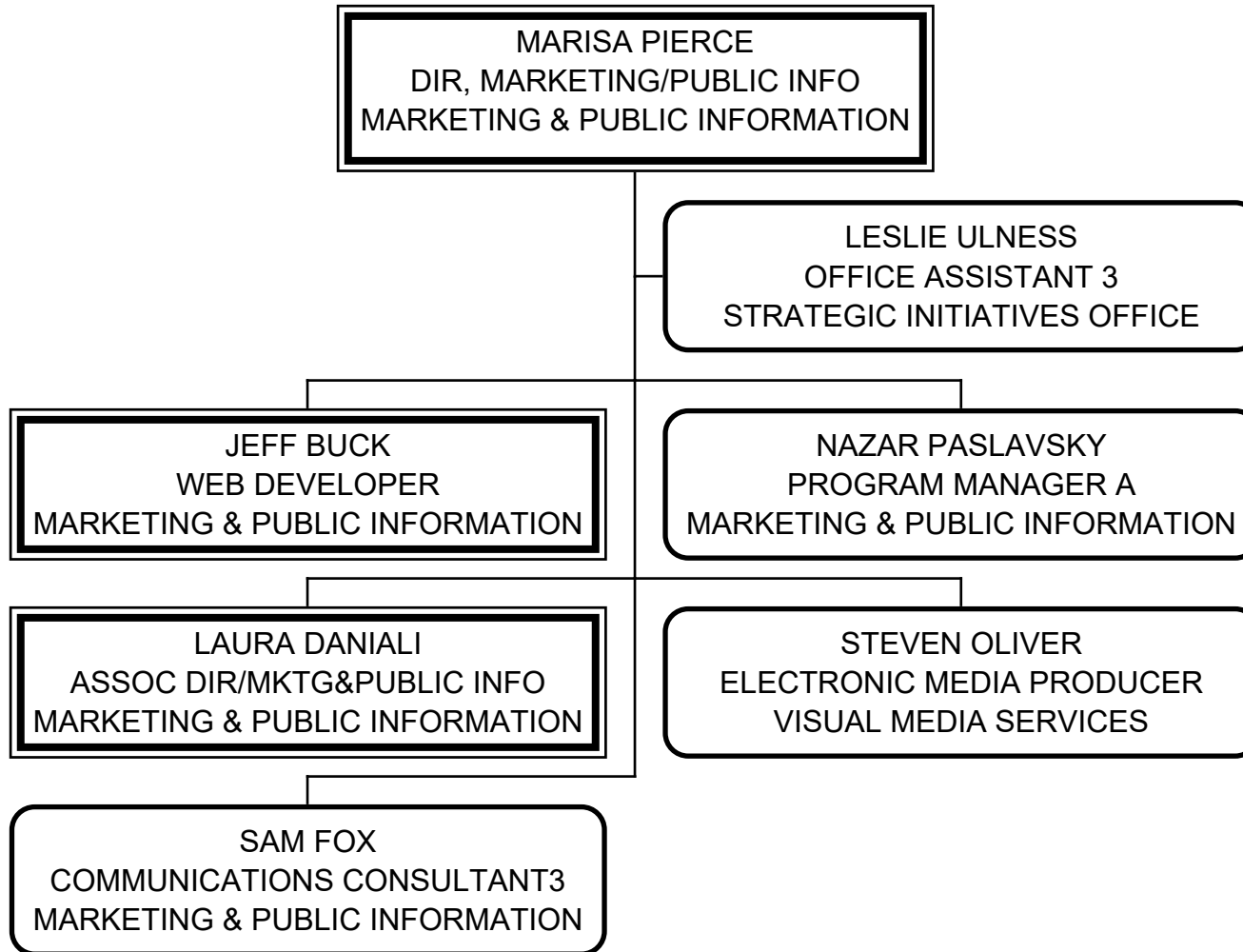


EDMONDS COMMUNITY COLLEGE  
STRATEGIC INITIATIVES OFFICE



# EDMONDS COMMUNITY COLLEGE

## MARKETING & PUBLIC INFORMATION



# EDMONDS COMMUNITY COLLEGE

## MARKETING & PUBLIC INFORMATION

LAURA DANIALI  
ASSOC DIR/MKTG&PUBLIC INFO  
MARKETING & PUBLIC INFORMATION

VINCENT VANHEE  
GRAPHIC DESIGNER  
MARKETING & PUBLIC INFORMATION

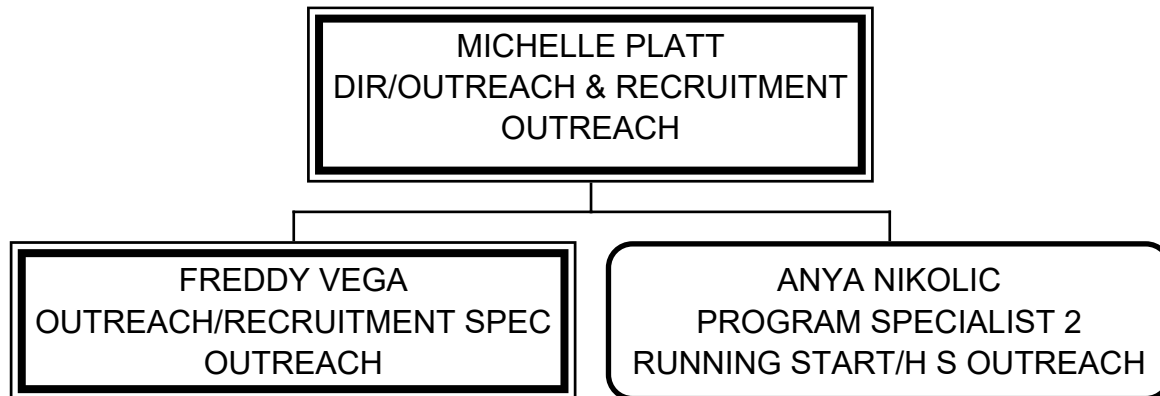
# EDMONDS COMMUNITY COLLEGE

## RUNNING START/H S OUTREACH

ROBERT WALKINSHAW  
DIR, RUNNING START PROGRAM  
RUNNING START/H S OUTREACH

CHERRY CAIN  
CUSTOMER SERVICE SPEC 3  
RUNNING START/H S OUTREACH

# EDMONDS COMMUNITY COLLEGE OUTREACH



# EDMONDS COMMUNITY COLLEGE

## MATERIALS SCIENCE

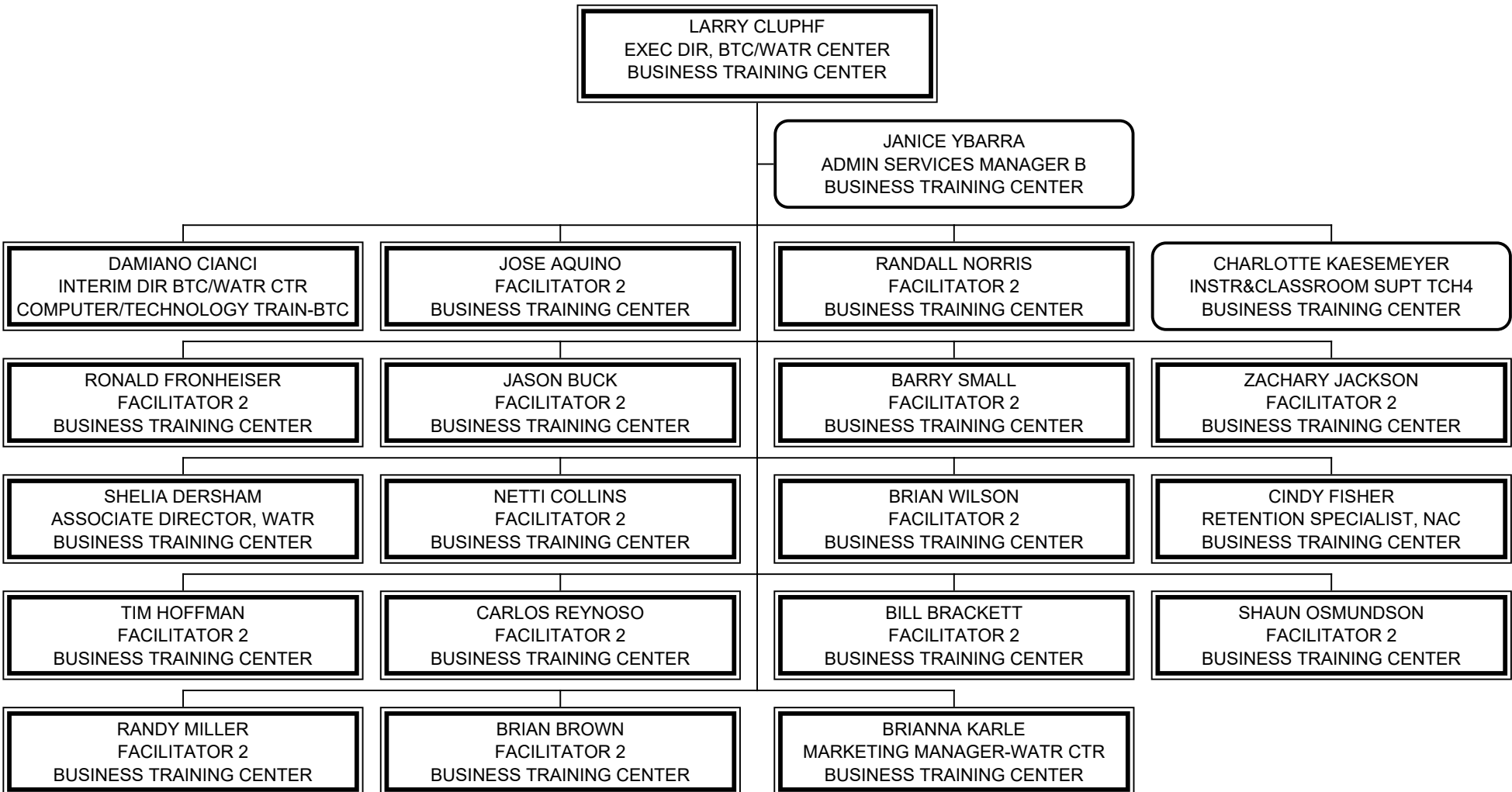
MEL COSSETTE  
DIR MATERIALS SCIENCE  
MATERIALS SCIENCE

ELIANA PESOLA  
SECRETARY SENIOR  
MATERIALS SCIENCE



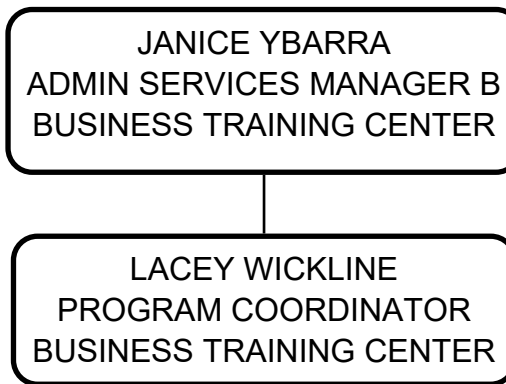
# EDMONDS COMMUNITY COLLEGE

## BUSINESS TRAINING CENTER



# EDMONDS COMMUNITY COLLEGE

## BUSINESS TRAINING CENTER



# EDMONDS COMMUNITY COLLEGE

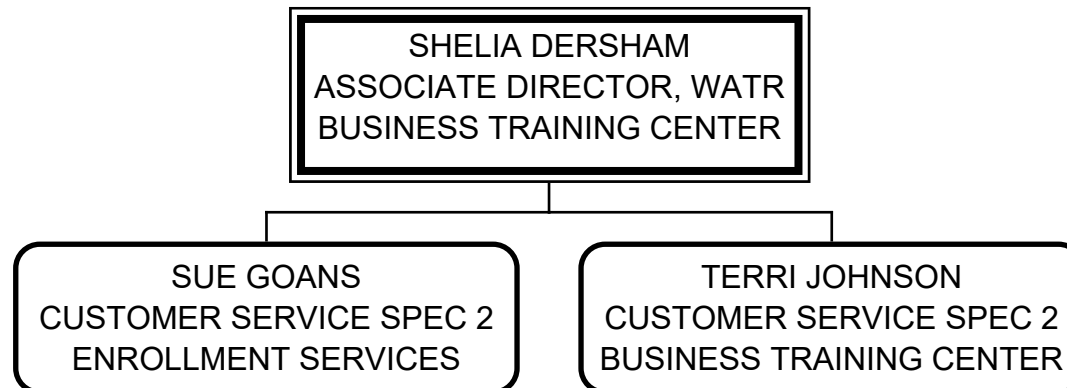
## COMPUTER/TECHNOLOGY TRAIN-BTC

DAMIANO CIANCI  
INTERIM DIR BTC/WATR CTR  
COMPUTER/TECHNOLOGY TRAIN-BTC

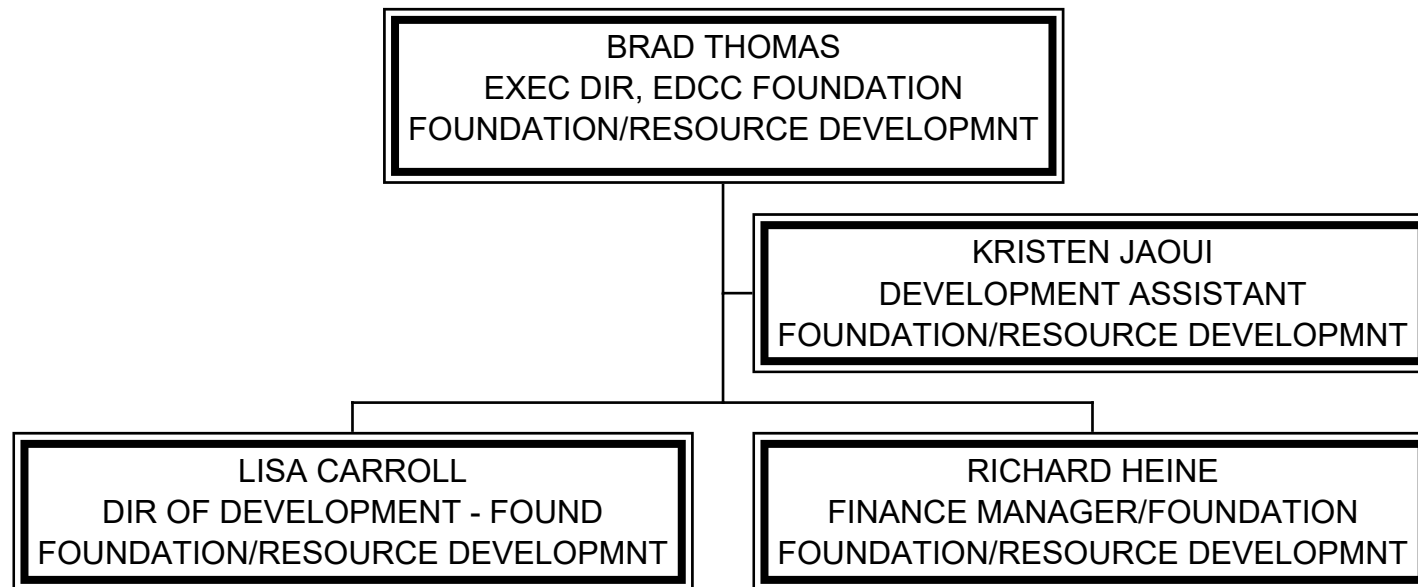
JAMIE SCHULZ  
IT CUSTOMER SUPPORT  
IT SERVICE MANAGEMENT

# EDMONDS COMMUNITY COLLEGE

## BUSINESS TRAINING CENTER



# EDMONDS COMMUNITY COLLEGE FOUNDATION/RESOURCE DEVELOPMNT



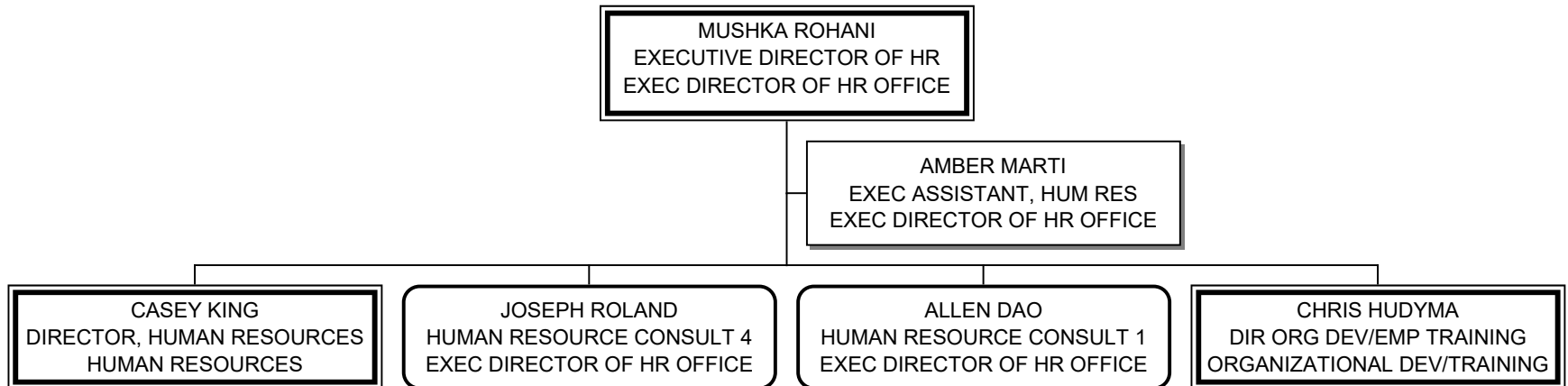
# EDMONDS COMMUNITY COLLEGE

## FOUNDATION/RESOURCE DEVELOPMNT

LISA CARROLL  
DIR OF DEVELOPMENT - FOUND  
FOUNDATION/RESOURCE DEVELOPMNT

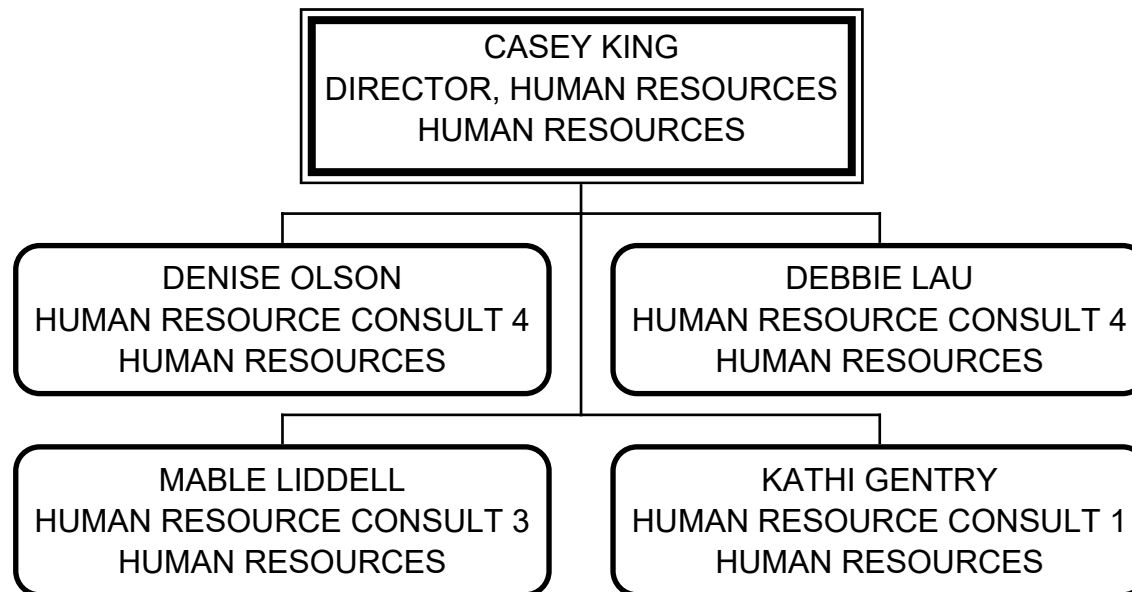
ELAINE HALL  
DEVELOPMENT MANAGER  
FOUNDATION/RESOURCE DEVELOPMNT

**EDMONDS COMMUNITY COLLEGE**  
**EXEC DIRECTOR OF HR OFFICE**



# EDMONDS COMMUNITY COLLEGE

## HUMAN RESOURCES





# EDMONDS COMMUNITY COLLEGE

## HUMAN RESOURCES

DENISE OLSON  
HUMAN RESOURCE CONSULT 4  
HUMAN RESOURCES

CHRIS KHOURY  
HUMAN RESOURCE CONSULT 1  
HUMAN RESOURCES

# EDMONDS COMMUNITY COLLEGE

## ORGANIZATIONAL DEV/TRAINING

CHRIS HUDYMA  
DIR ORG DEV/EMP TRAINING  
ORGANIZATIONAL DEV/TRAINING

YUMI NESHEIM  
PROGRAM COORDINATOR  
ORGANIZATIONAL DEV/TRAINING

# EDMONDS COMMUNITY COLLEGE

## VICE PRES OF FINANCE/OPERATION

GREGORY HINTON  
VP FOR FINANCE/OPERATIONS  
VICE PRES OF FINANCE/OPERATION

HELENE WRIGHT  
EXEC ASST TO VP  
VICE PRES OF FINANCE/OPERATION

JADE JETER-HILL  
DIR, SAFETY/SECUR&EMER PREP  
CAMPUS SAFETY/SECURITY

GENI TEAGUE  
DIRECTOR OF ACCOUNTING  
ACCOUNTING

JANET MERCER  
BUDGET DIRECTOR  
BUDGET OFFICE

SAM SALSMAN  
DIR, FOOD SERVICE/CATERING  
FOOD SERVICES & CATERING

STEPHANIE TEACHMAN  
EX DIR, FACIL/OPS/CAP PROJ  
FACILITIES PLANNING/OPERATIONS

KELVIN NESVOG  
DIR AUXILIARY SERVICES  
AUXILIARY SERVICES

HEATHER LYONS  
DIRECTOR OF FINANCE  
FINANCE/PURCHASING

# EDMONDS COMMUNITY COLLEGE

## CAMPUS SAFETY/SECURITY

JADE JETER-HILL  
DIR, SAFETY/SECUR&EMER PREP  
CAMPUS SAFETY/SECURITY

CLARISSA MUNOZ-PALOMO  
ADMINISTRATIVE ASSISTANT 3  
CAMPUS SAFETY/SECURITY

VINCENT LIVINGSTON  
EMER PREP MGR/CLERY COMPL  
CAMPUS SAFETY/SECURITY

RICK SODERBACK  
CAMPUS SECURITY OFFICER  
CAMPUS SAFETY/SECURITY

JEFFERY EMENS  
CAMPUS SECURITY OFFICER  
CAMPUS SAFETY/SECURITY

TEVITA FONG  
CAMPUS SECURITY OFFICER  
CAMPUS SAFETY/SECURITY

RICK REILLEY  
CAMPUS SECURITY OFFICER  
CAMPUS SAFETY/SECURITY

FERNANDO MORATALLA  
CAMPUS SECURITY OFFICER  
CAMPUS SAFETY/SECURITY

ASHLEY GRAVES  
CAMPUS SECURITY OFFICER  
CAMPUS SAFETY/SECURITY

GLEN CASTOR  
CAMPUS SECURITY OFFICER  
CAMPUS SAFETY/SECURITY

CONNER WEITZEL  
CAMPUS SECURITY OFFICER  
CAMPUS SAFETY/SECURITY

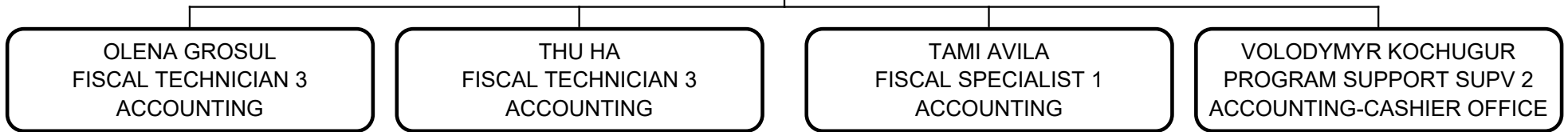
KRIS ANDERSON  
CAMPUS SECURITY OFFICER  
CAMPUS SAFETY/SECURITY

WILLIAM COX  
CAMPUS SECURITY OFFICER  
CAMPUS SAFETY/SECURITY

# EDMONDS COMMUNITY COLLEGE

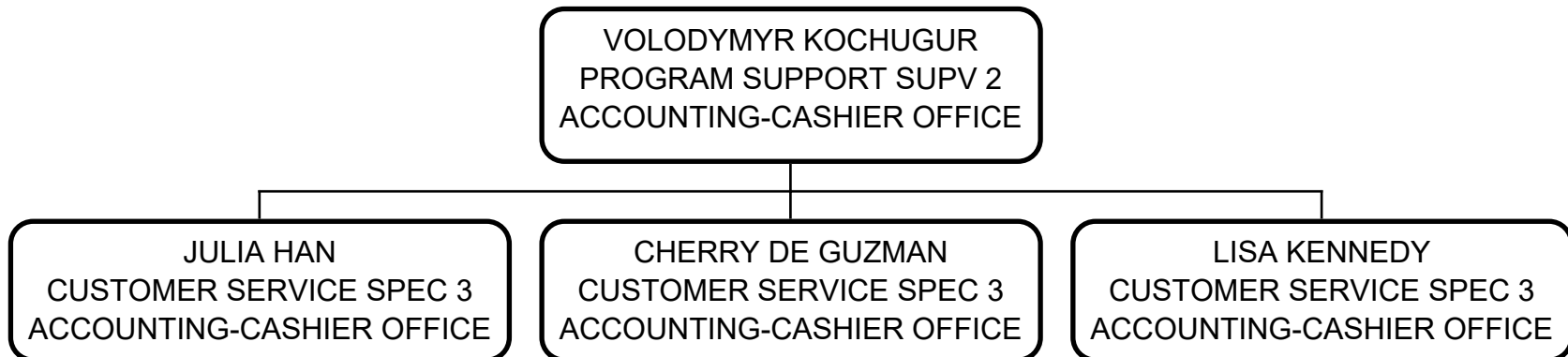
## ACCOUNTING

GENI TEAGUE  
DIRECTOR OF ACCOUNTING  
ACCOUNTING



# EDMONDS COMMUNITY COLLEGE

## ACCOUNTING-CASHIER OFFICE



**EDMONDS COMMUNITY COLLEGE**  
**BUDGET OFFICE**

JANET MERCER  
BUDGET DIRECTOR  
BUDGET OFFICE

# EDMONDS COMMUNITY COLLEGE

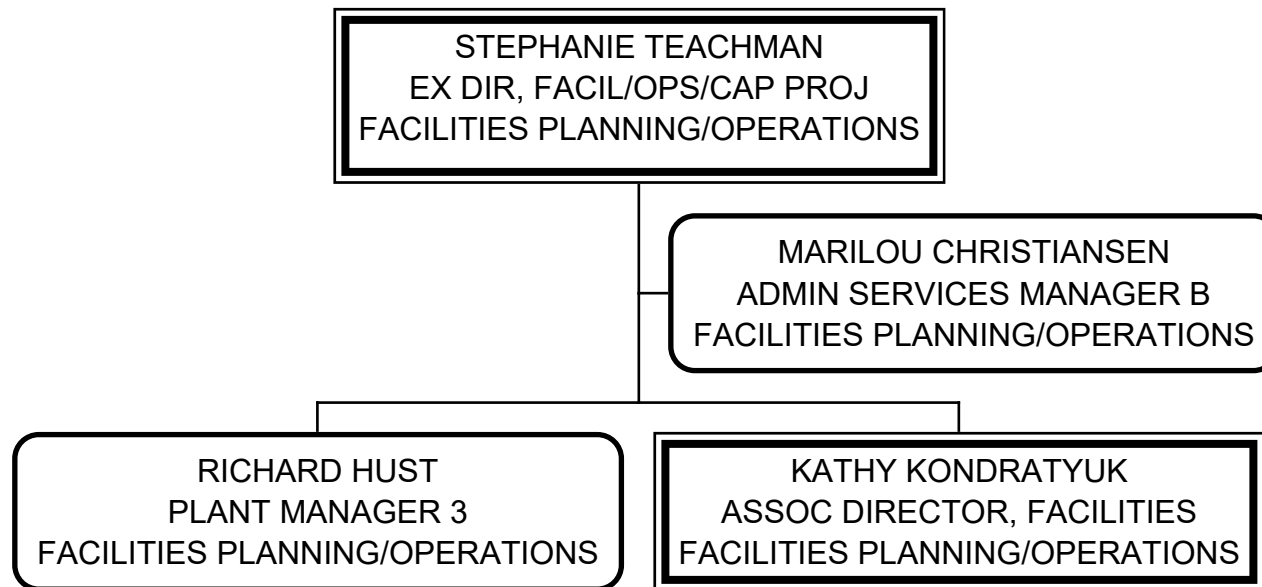
## FOOD SERVICES & CATERING





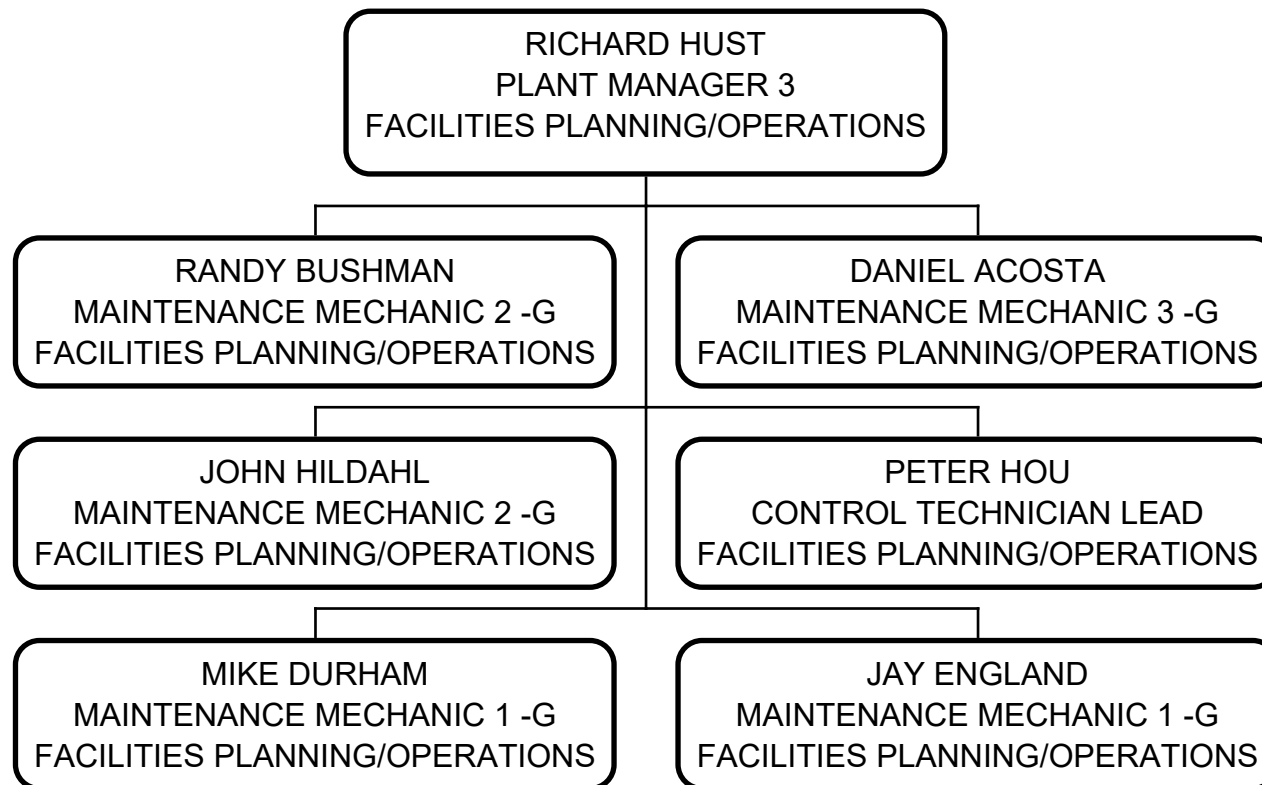
# EDMONDS COMMUNITY COLLEGE

## FACILITIES PLANNING/OPERATIONS



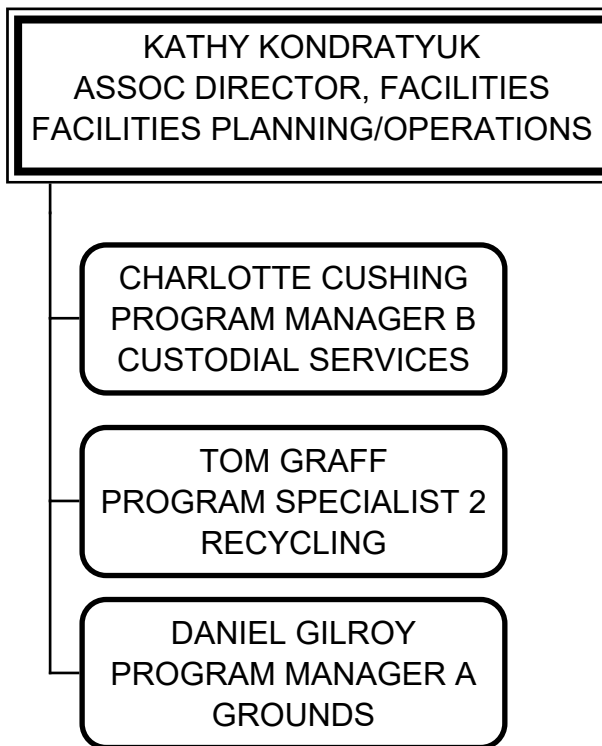
# EDMONDS COMMUNITY COLLEGE

## FACILITIES PLANNING/OPERATIONS



# EDMONDS COMMUNITY COLLEGE

## FACILITIES PLANNING/OPERATIONS



# EDMONDS COMMUNITY COLLEGE

## CUSTODIAL SERVICES

CHARLOTTE CUSHING  
PROGRAM MANAGER B  
CUSTODIAL SERVICES

DAVID SMITH  
MAINTENANCE CUSTODIAN  
CUSTODIAL SERVICES

RUBEN LASPINA  
CUSTODIAN 2  
CUSTODIAL SERVICES

DONNY MACH  
CUSTODIAN 2  
CUSTODIAL SERVICES

IRINA SAVENKOVA  
CUSTODIAN 2  
CUSTODIAL SERVICES

JOSEPH PITMAN  
MAINTENANCE CUSTODIAN  
CUSTODIAL SERVICES

OLGA MASTIKASH  
CUSTODIAN 2  
CUSTODIAL SERVICES

KIRK MAHALATH  
MAINTENANCE CUSTODIAN  
CUSTODIAL SERVICES

JULIA LOKHMATOV  
CUSTODIAN 2  
CUSTODIAL SERVICES

LYUBOVA KOROLEVA  
CUSTODIAN 2  
CUSTODIAL SERVICES

CHERYL BAILEY  
CUSTODIAN 2  
CUSTODIAL SERVICES

MICHEL'LE OGU  
CUSTODIAN 2  
CUSTODIAL SERVICES

CHRISTOPHER JENNINGS  
CUSTODIAN 2  
CUSTODIAL SERVICES

BUNHOR HENG  
CUSTODIAN 2  
CUSTODIAL SERVICES

GALINA KLIMETS  
CUSTODIAN 2  
CUSTODIAL SERVICES

AL HATCHER  
CUSTODIAN 2  
CUSTODIAL SERVICES

JAROCKUS GRISSOM  
CUSTODIAN 2  
CUSTODIAL SERVICES

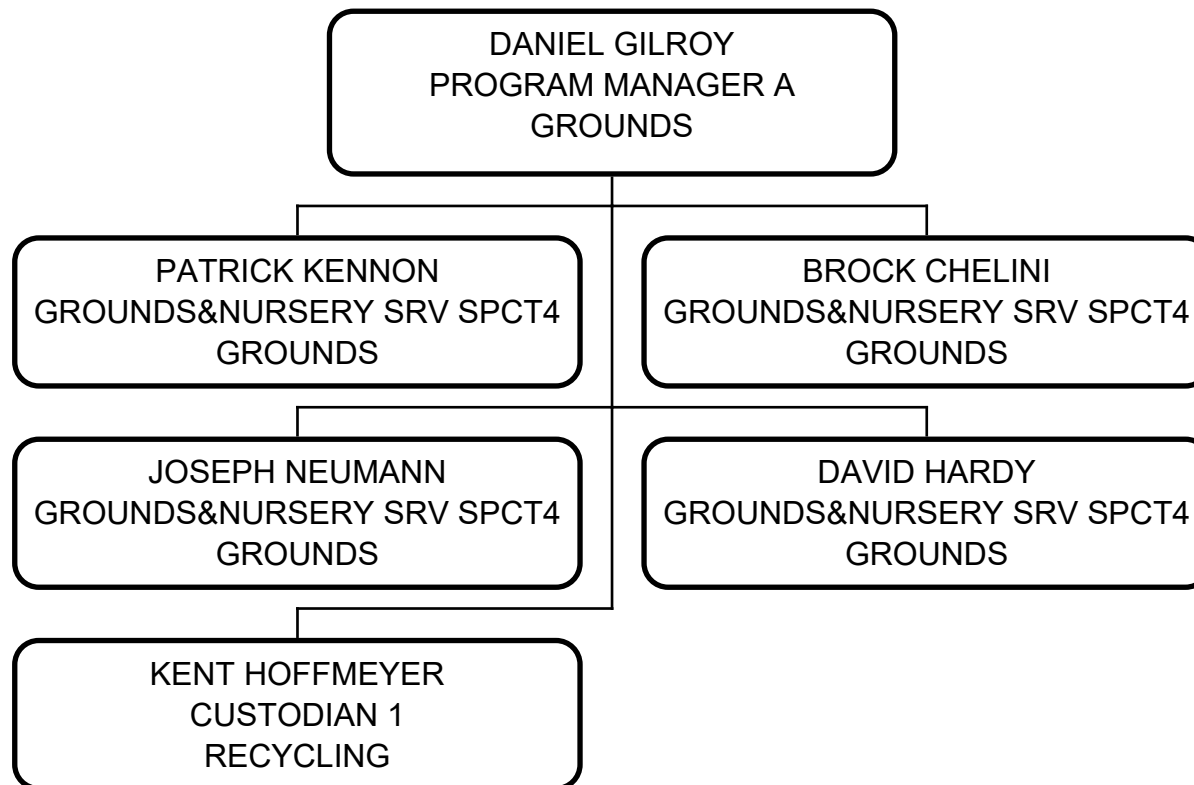
VINCE JOHNSON  
CUSTODIAN 3  
CUSTODIAL SERVICES

ALVARO BOMTEMPO  
CUSTODIAN 2  
CUSTODIAL SERVICES

JADIA BLISS  
CUSTODIAN 2  
CUSTODIAL SERVICES

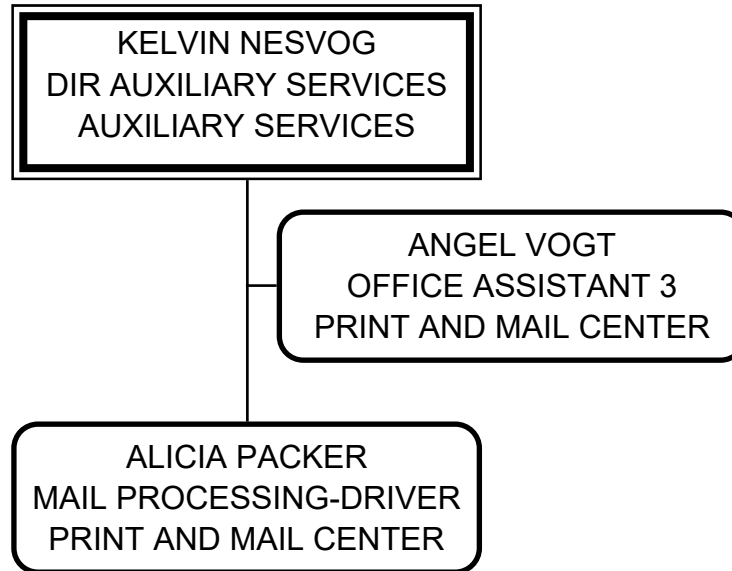
EMERY BROWN  
CUSTODIAN 2  
CUSTODIAL SERVICES

# EDMONDS COMMUNITY COLLEGE GROUNDS



# EDMONDS COMMUNITY COLLEGE

## AUXILIARY SERVICES



**EDMONDS COMMUNITY COLLEGE**  
**FINANCE/PURCHASING**

HEATHER LYONS  
DIRECTOR OF FINANCE  
FINANCE/PURCHASING

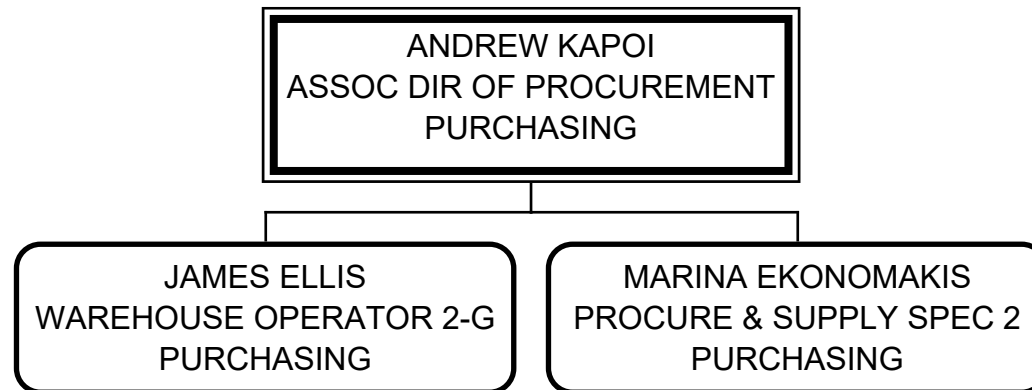
MARINA KHOLOSHENKO  
FISCAL SPECIALIST 1  
ACCOUNTING

BEVERLY FELTON  
FISCAL ANALYST 3  
ACCOUNTING

ANDREW KAPOI  
ASSOC DIR OF PROCUREMENT  
PURCHASING

ANN MARTIN-CUMMINS  
ASSOC DIRECTOR, BUDGETING  
BUDGET OFFICE

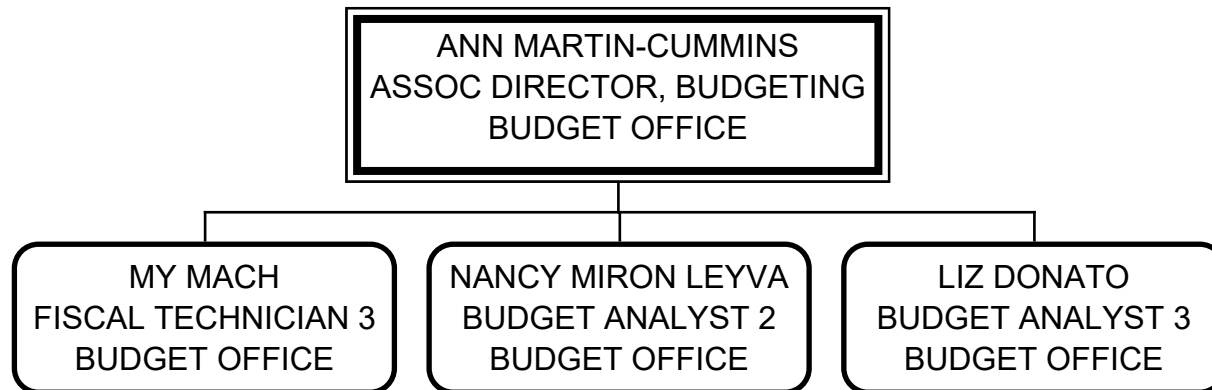
# EDMONDS COMMUNITY COLLEGE PURCHASING





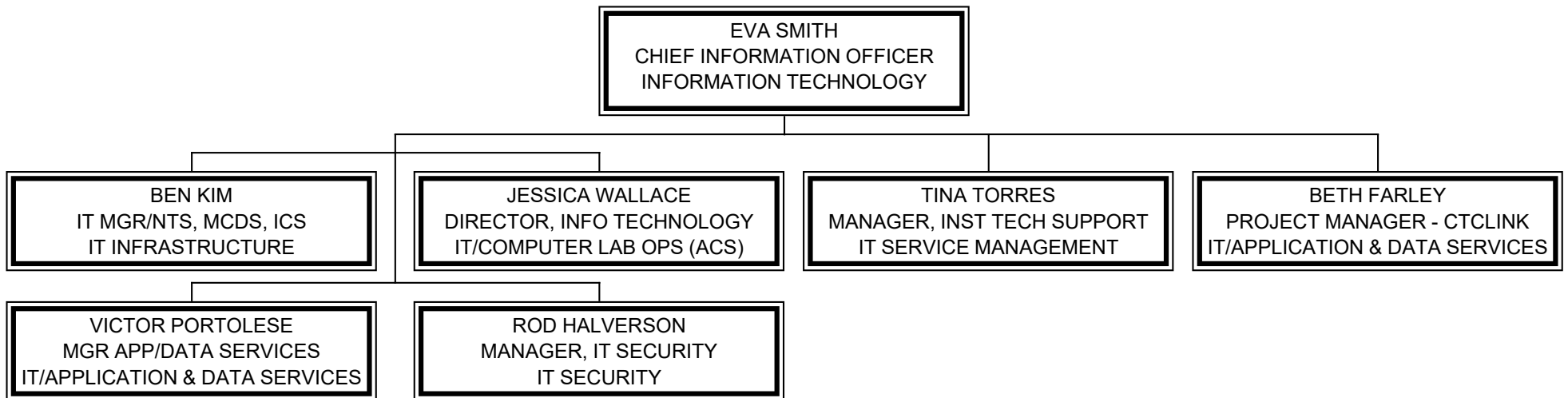
# EDMONDS COMMUNITY COLLEGE

## BUDGET OFFICE



# EDMONDS COMMUNITY COLLEGE

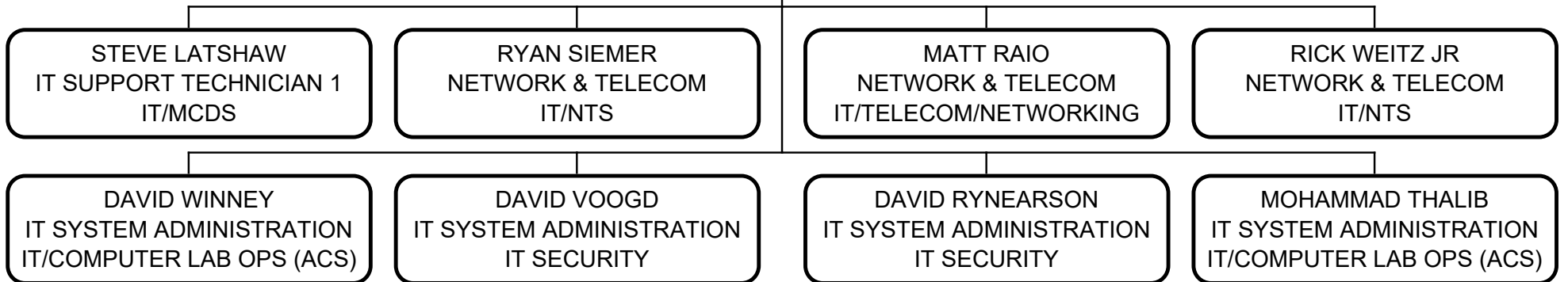
## INFORMATION TECHNOLOGY



# EDMONDS COMMUNITY COLLEGE

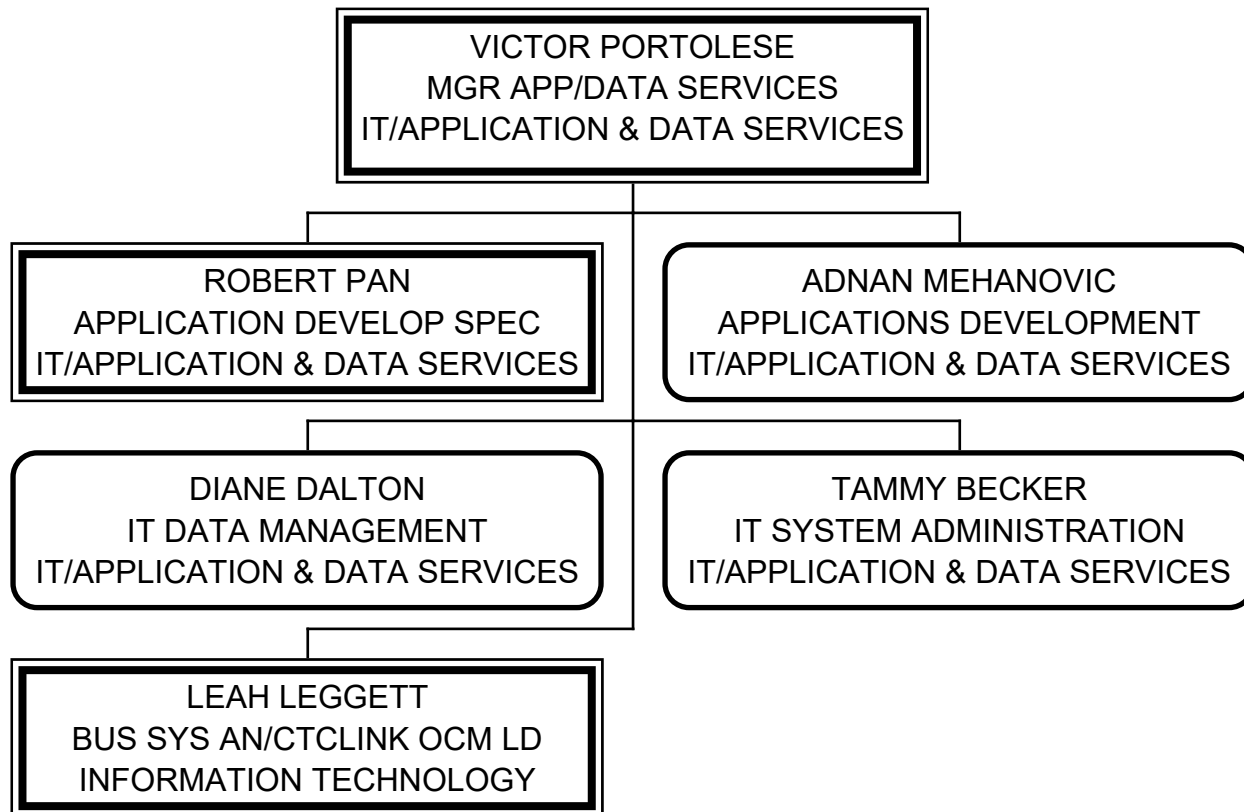
## IT INFRASTRUCTURE

BEN KIM  
IT MGR/NTS, MCDS, ICS  
IT INFRASTRUCTURE



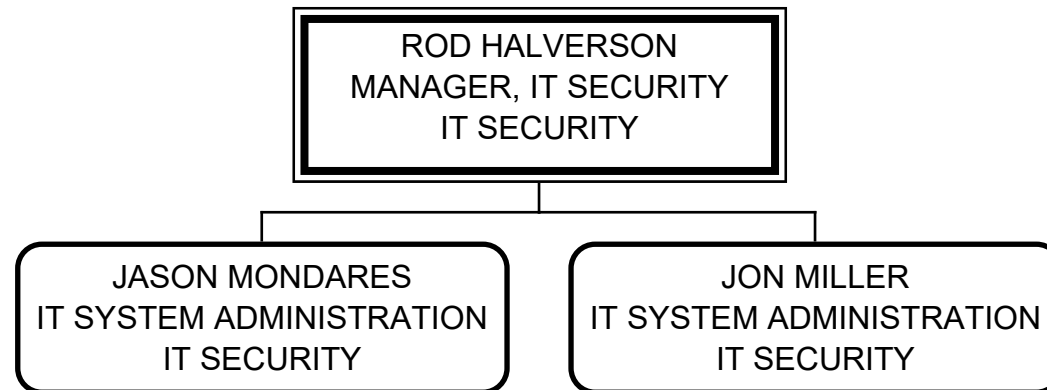
# EDMONDS COMMUNITY COLLEGE

## IT/APPLICATION & DATA SERVICES



# EDMONDS COMMUNITY COLLEGE

## IT SECURITY



# EDMONDS COMMUNITY COLLEGE

## IT SERVICE MANAGEMENT

TINA TORRES  
MANAGER, INST TECH SUPPORT  
IT SERVICE MANAGEMENT

RITA SMART  
IT SUPPORT TECHNICIAN 1  
IT SERVICE MANAGEMENT

FREDERICK PIETERS  
PROGRAM MANAGER A  
IT/ICS

JOHN FREDRICKSON  
IT CUSTOMER SUPPORT  
IT SECURITY

TOAN NGUYEN  
IT SUPPORT TECHNICIAN 2  
IT SERVICE MANAGEMENT

THOM MCFALL  
IT SUPPORT TECHNICIAN 1  
IT SERVICE MANAGEMENT

BRYCE VILLANUEVA  
IT SUPPORT TECHNICIAN 2  
IT SERVICE MANAGEMENT

TUAN PHAM  
IT SUPPORT TECHNICIAN 2  
IT SECURITY

MIKE YOCOM  
IT SUPPORT TECHNICIAN 1  
IT/COMPUTER LAB OPS (ACS)

KYLE BERNES  
IT CUSTOMER SUPPORT  
IT/COMPUTER LAB OPS (ACS)

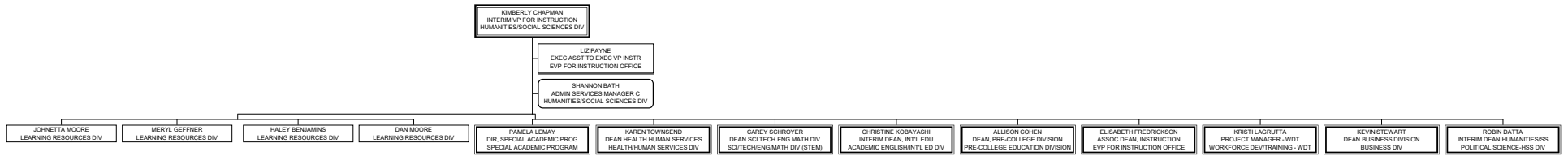
# EDMONDS COMMUNITY COLLEGE

## IT/APPLICATION & DATA SERVICES

BETH FARLEY  
PROJECT MANAGER - CTCLINK  
IT/APPLICATION & DATA SERVICES

JACK FOERSTER  
BUSINESS SYSTEMS ANALYST  
INFORMATION TECHNOLOGY

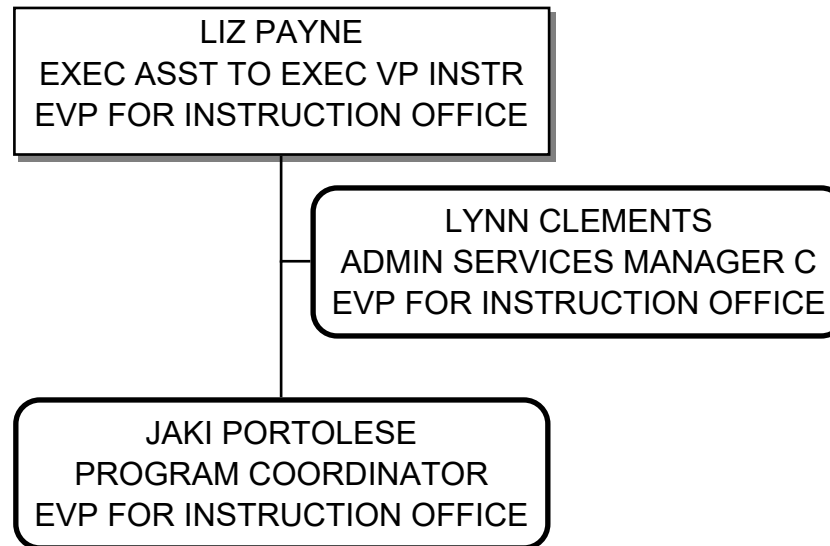
**EDMONDS COMMUNITY COLLEGE**  
HUMANITIES/SOCIAL SCIENCES DIV





# EDMONDS COMMUNITY COLLEGE

## EVP FOR INSTRUCTION OFFICE



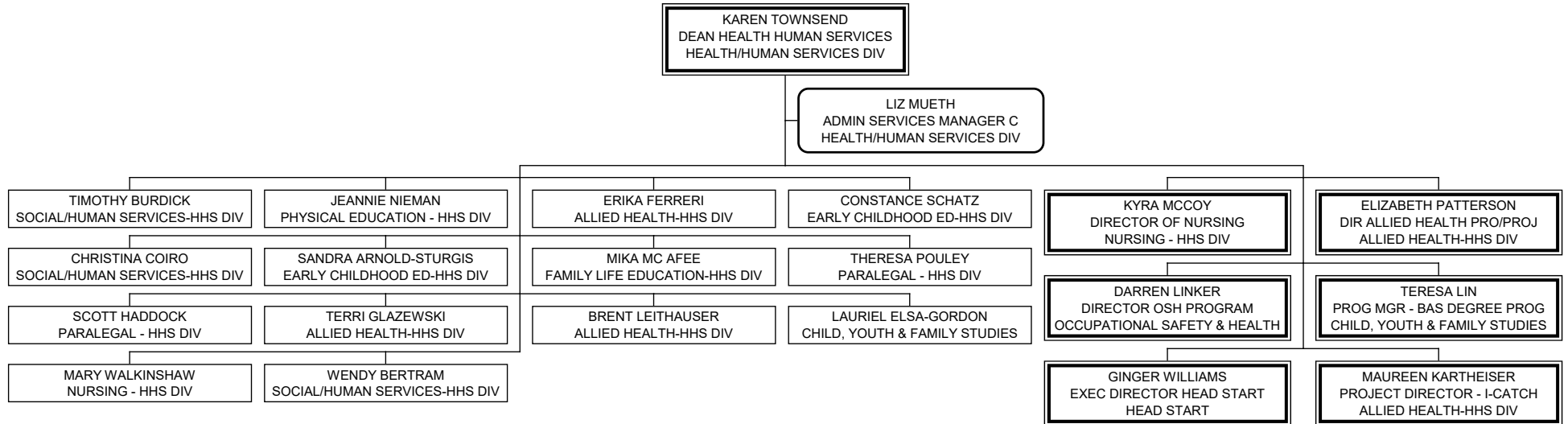
# EDMONDS COMMUNITY COLLEGE

## HUMANITIES/SOCIAL SCIENCES DIV

SHANNON BATH  
ADMIN SERVICES MANAGER C  
HUMANITIES/SOCIAL SCIENCES DIV

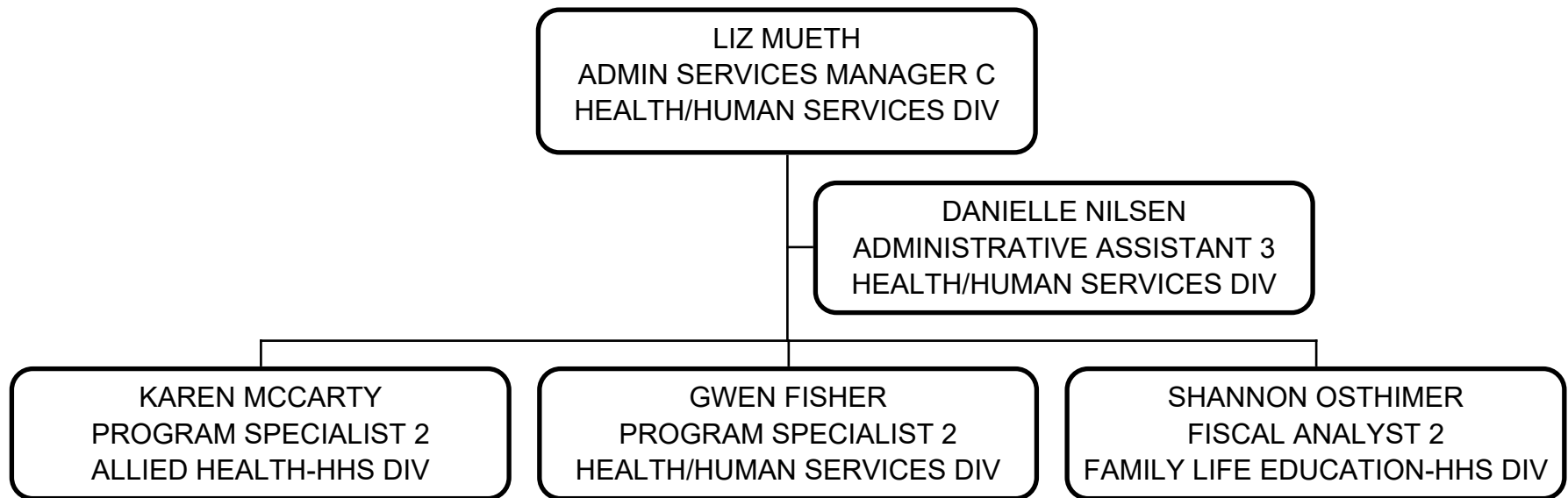
LIA ANDREWS  
ADMINISTRATIVE ASSISTANT 2  
HUMANITIES/SOCIAL SCIENCES DIV

**EDMONDS COMMUNITY COLLEGE**  
HEALTH/HUMAN SERVICES DIV

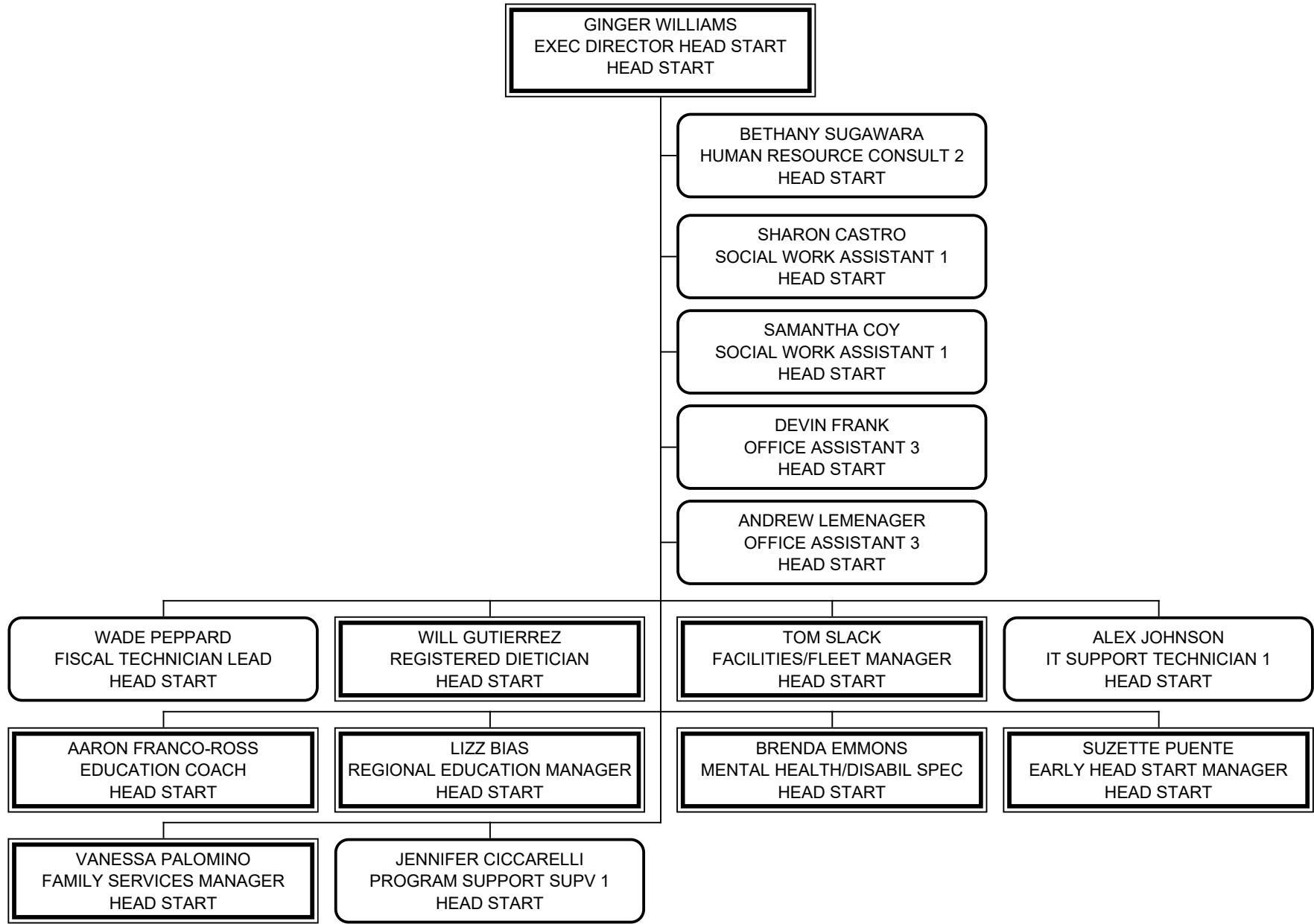


# EDMONDS COMMUNITY COLLEGE

## HEALTH/HUMAN SERVICES DIV



# EDMONDS COMMUNITY COLLEGE HEAD START



# EDMONDS COMMUNITY COLLEGE

## HEAD START

BETHANY SUGAWARA  
HUMAN RESOURCE CONSULT 2  
HEAD START

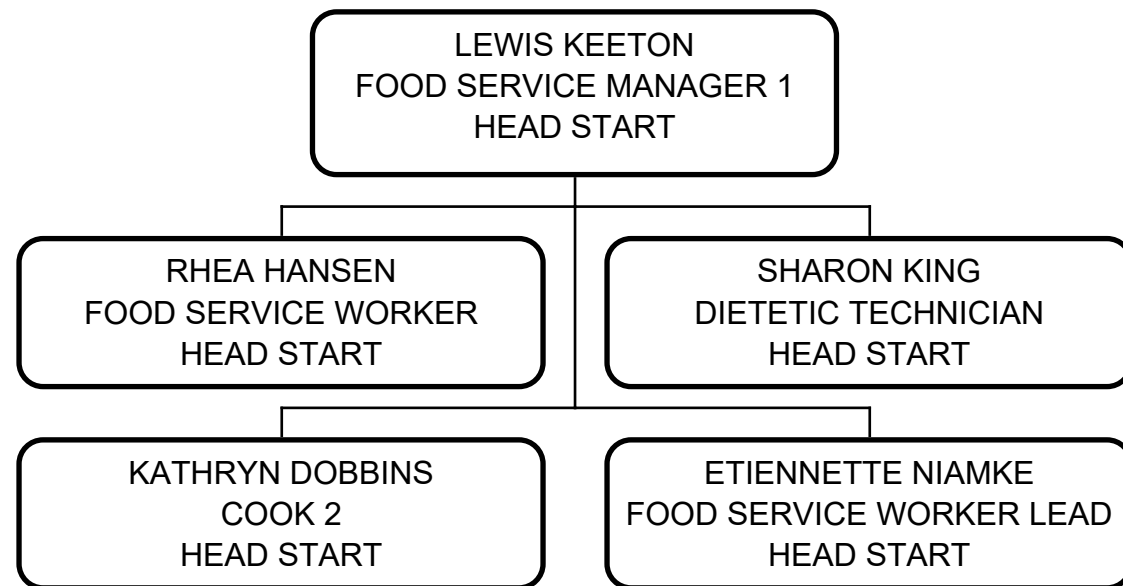
SARAH ORR  
PROGRAM ASSISTANT  
HEAD START

# EDMONDS COMMUNITY COLLEGE

## HEAD START

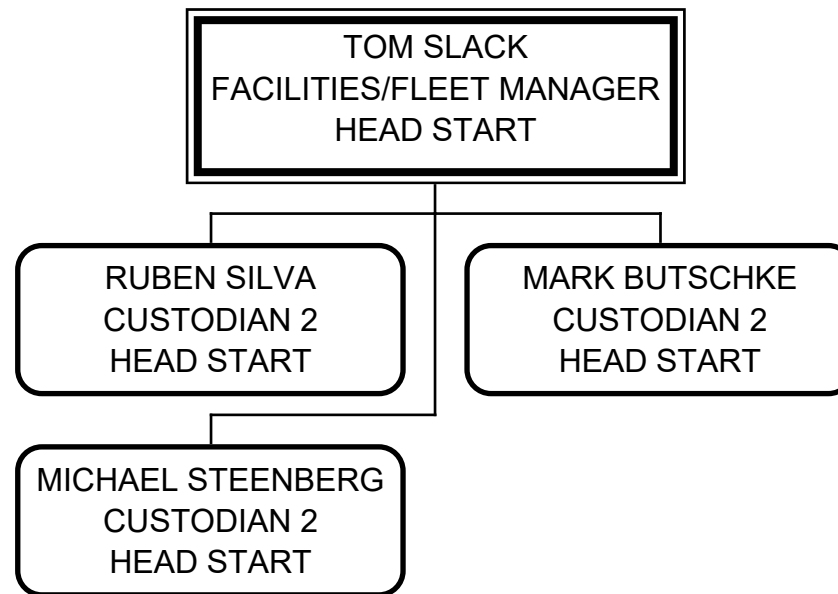


# EDMONDS COMMUNITY COLLEGE HEAD START



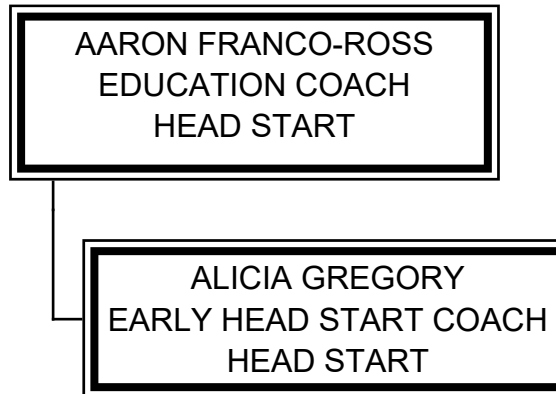


# EDMONDS COMMUNITY COLLEGE HEAD START

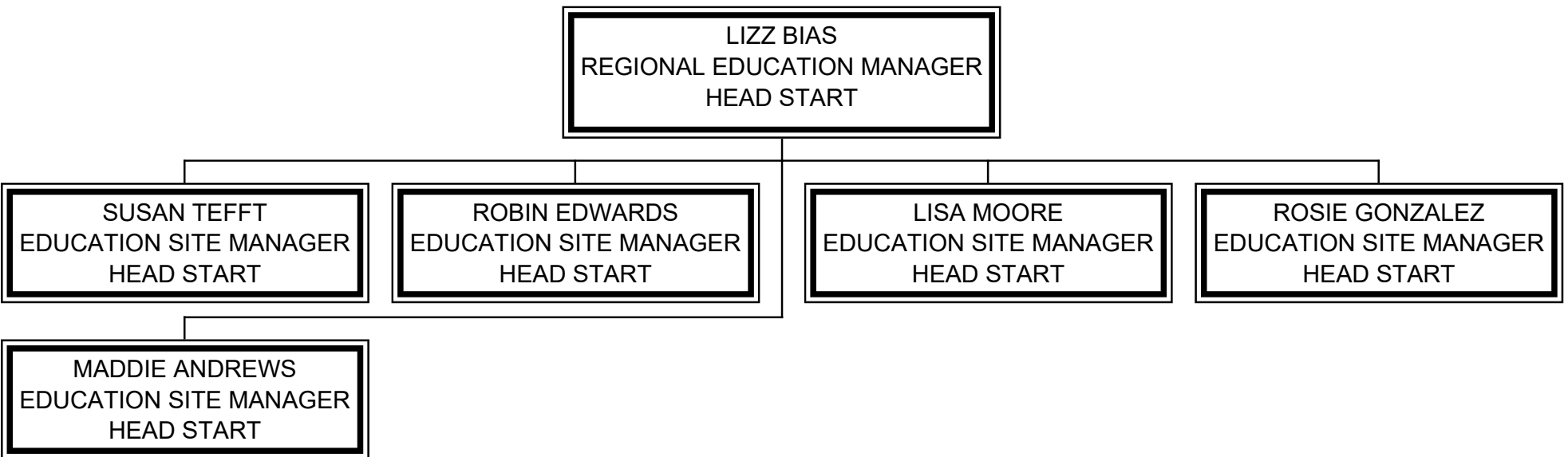


# EDMONDS COMMUNITY COLLEGE

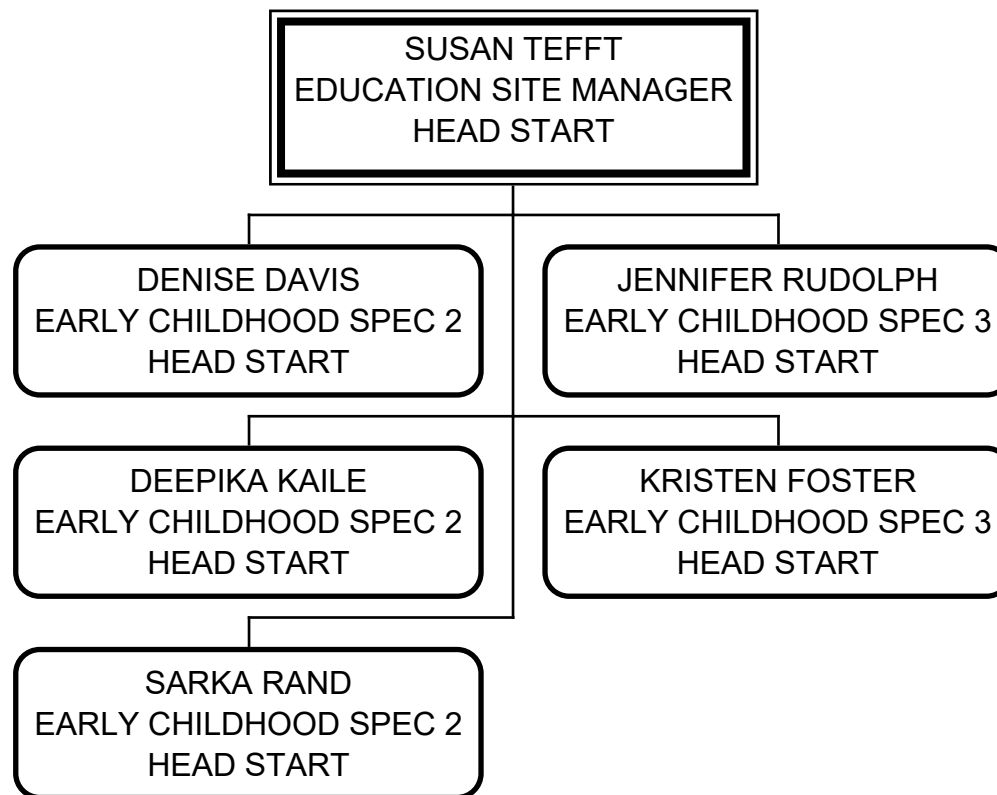
## HEAD START



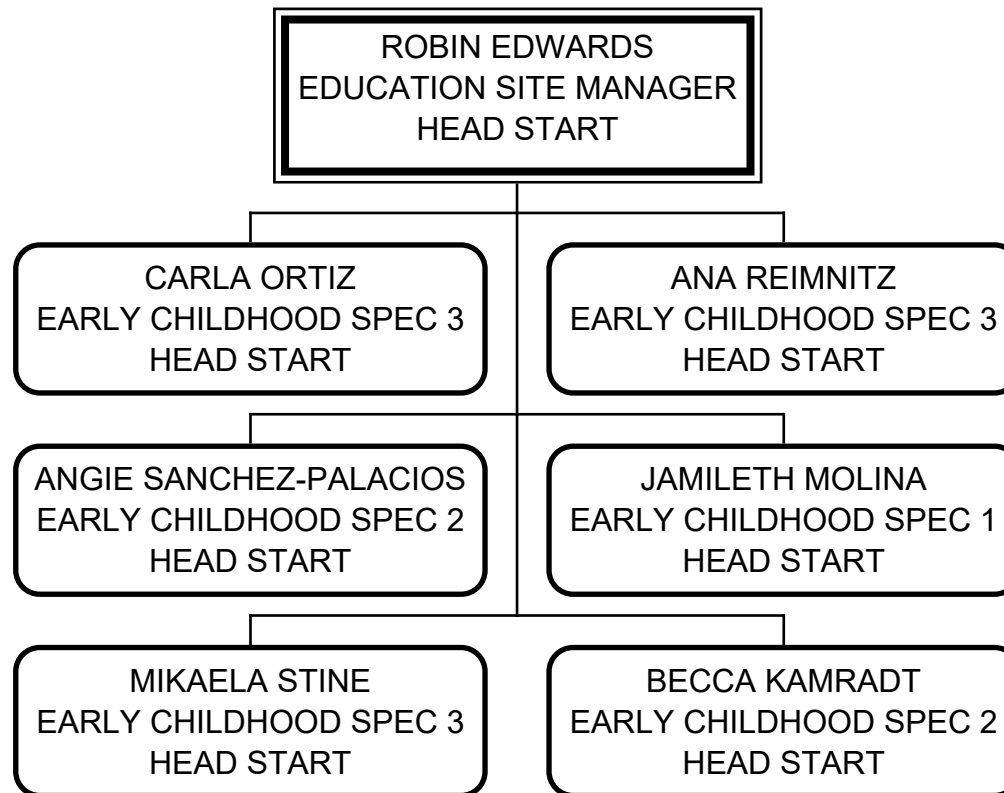
# EDMONDS COMMUNITY COLLEGE HEAD START



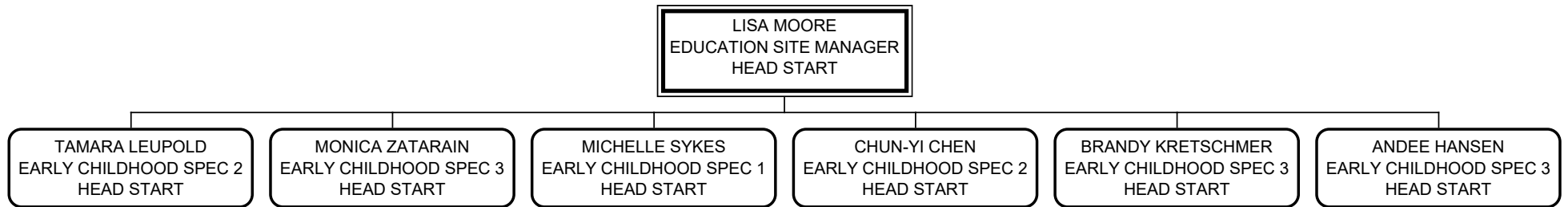
# EDMONDS COMMUNITY COLLEGE HEAD START



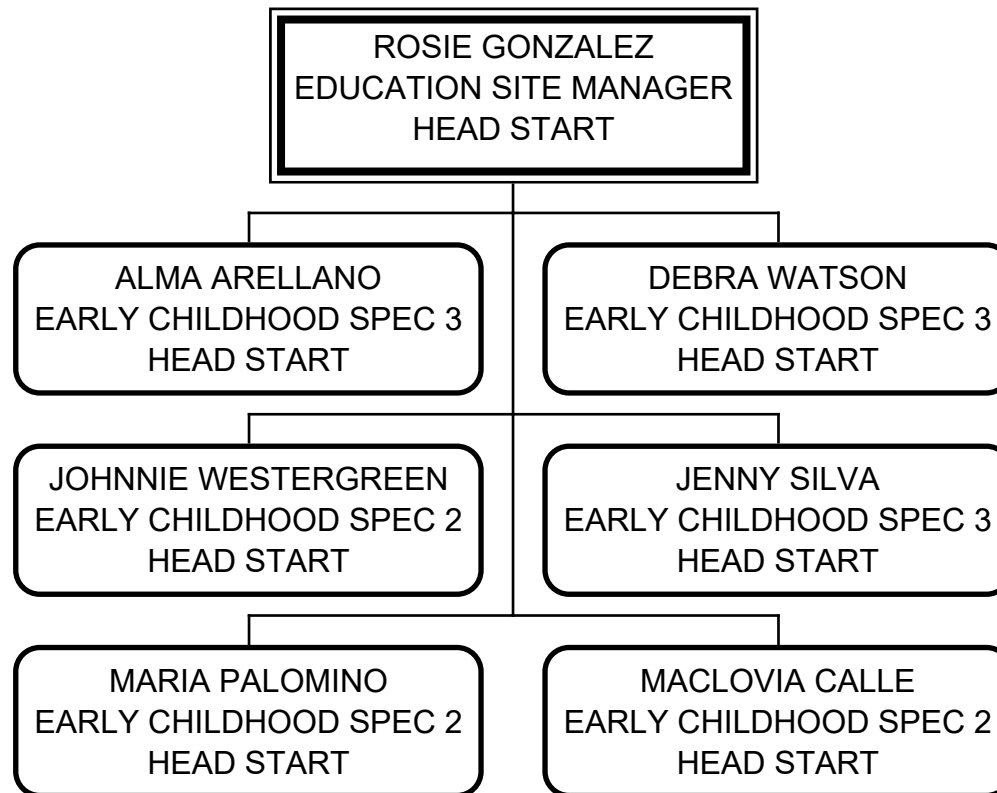
# EDMONDS COMMUNITY COLLEGE HEAD START



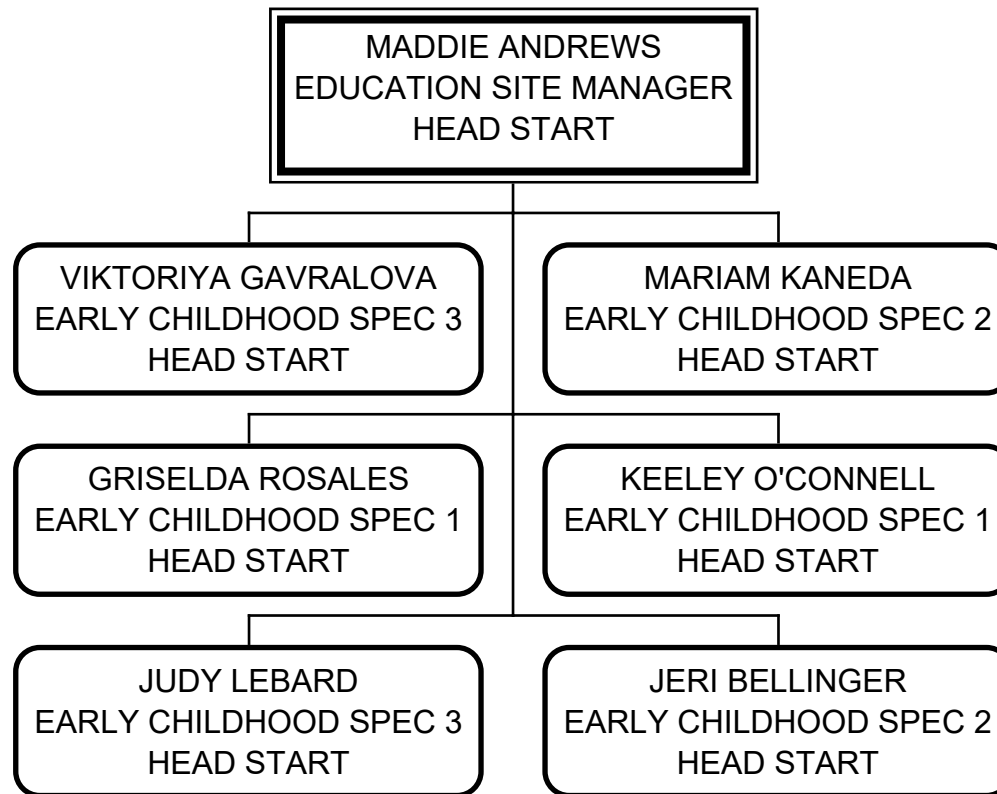
EDMONDS COMMUNITY COLLEGE  
HEAD START



# EDMONDS COMMUNITY COLLEGE HEAD START



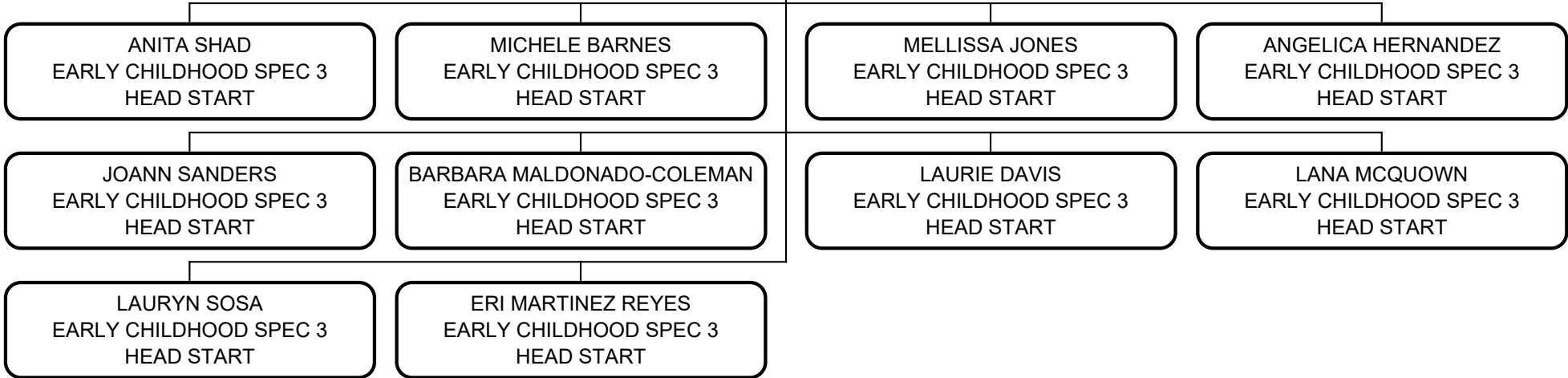
# EDMONDS COMMUNITY COLLEGE HEAD START





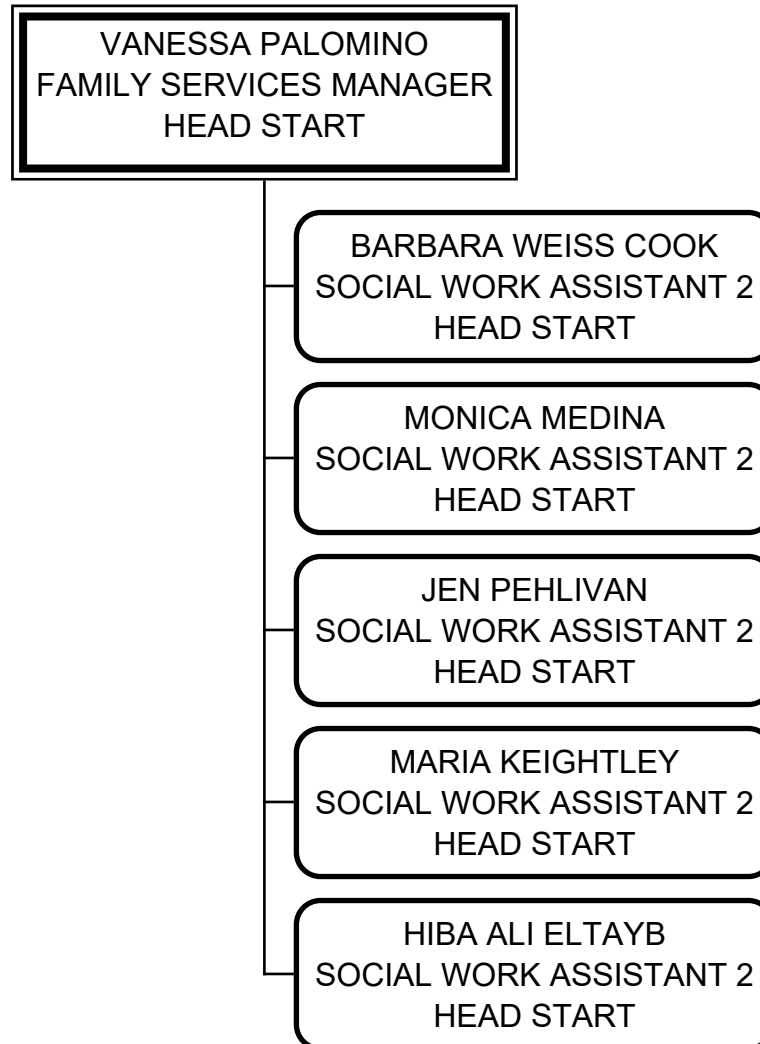
# EDMONDS COMMUNITY COLLEGE HEAD START

SUZETTE PUENTE  
EARLY HEAD START MANAGER  
HEAD START



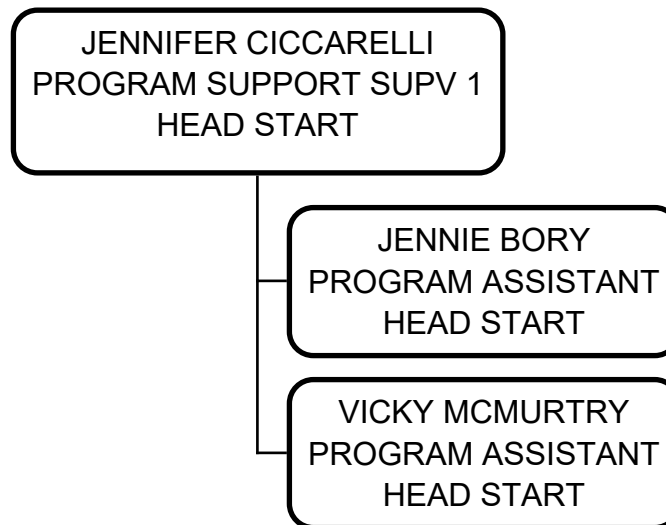
# EDMONDS COMMUNITY COLLEGE

## HEAD START



# EDMONDS COMMUNITY COLLEGE

## HEAD START



# EDMONDS COMMUNITY COLLEGE

## ALLIED HEALTH-HHS DIV

MAUREEN KARTHEISER  
PROJECT DIRECTOR - I-CATCH  
ALLIED HEALTH-HHS DIV

CHARLENE WICKSTROM  
ADMINISTRATIVE ASSISTANT 2  
ALLIED HEALTH-HHS DIV

RUSSELL DORSEY  
STU REC/MEDIA SPEC I-CATCH  
ALLIED HEALTH-HHS DIV

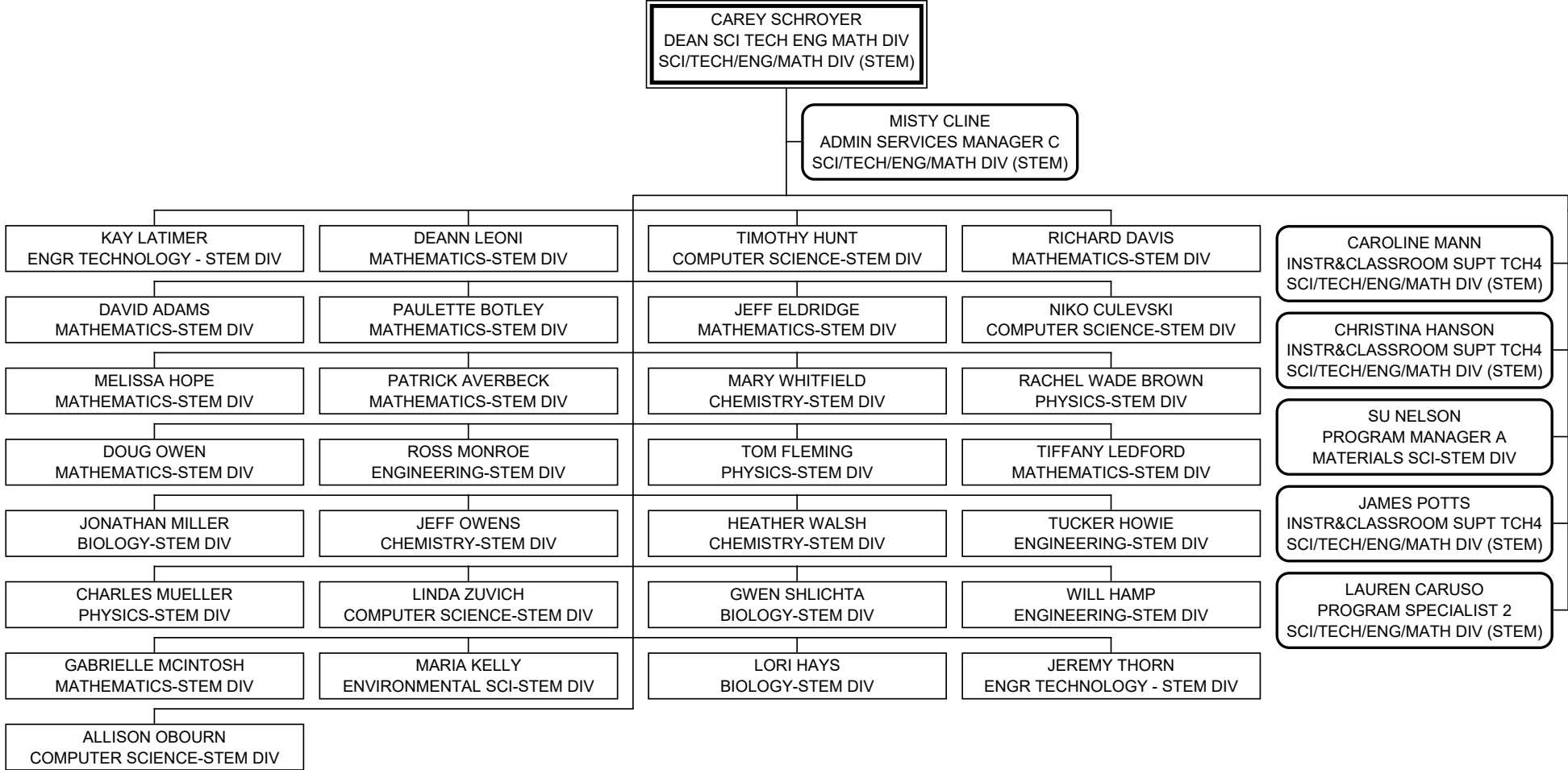
SLAVOMIR DZIECIATKOWSKI  
PROGRAM SPECIALIST 2  
ALLIED HEALTH-HHS DIV

MATT MCBURNETT  
I-CATCH NAVIGATOR/RET SPEC  
ALLIED HEALTH-HHS DIV

DEE ENDECOTT  
PROGRAM COORDINATOR  
ALLIED HEALTH-HHS DIV

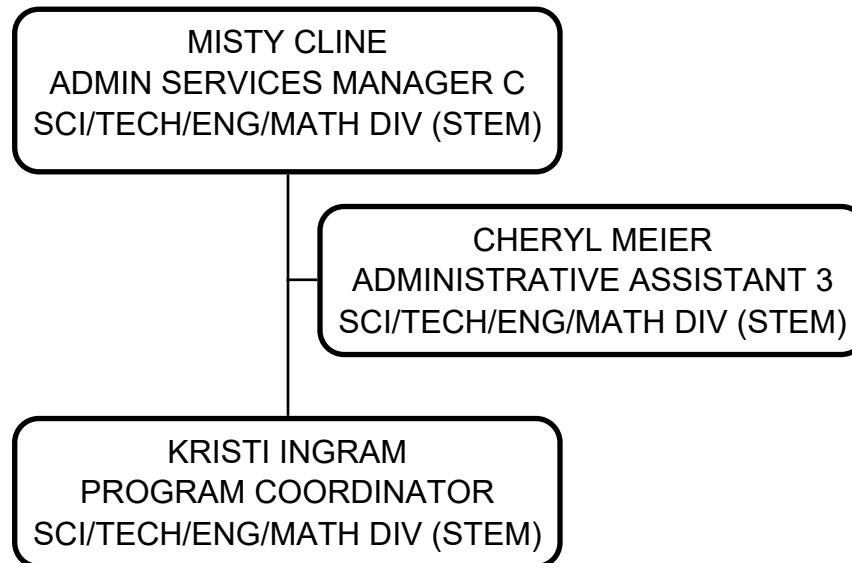
# EDMONDS COMMUNITY COLLEGE

## SCI/TECH/ENG/MATH DIV (STEM)

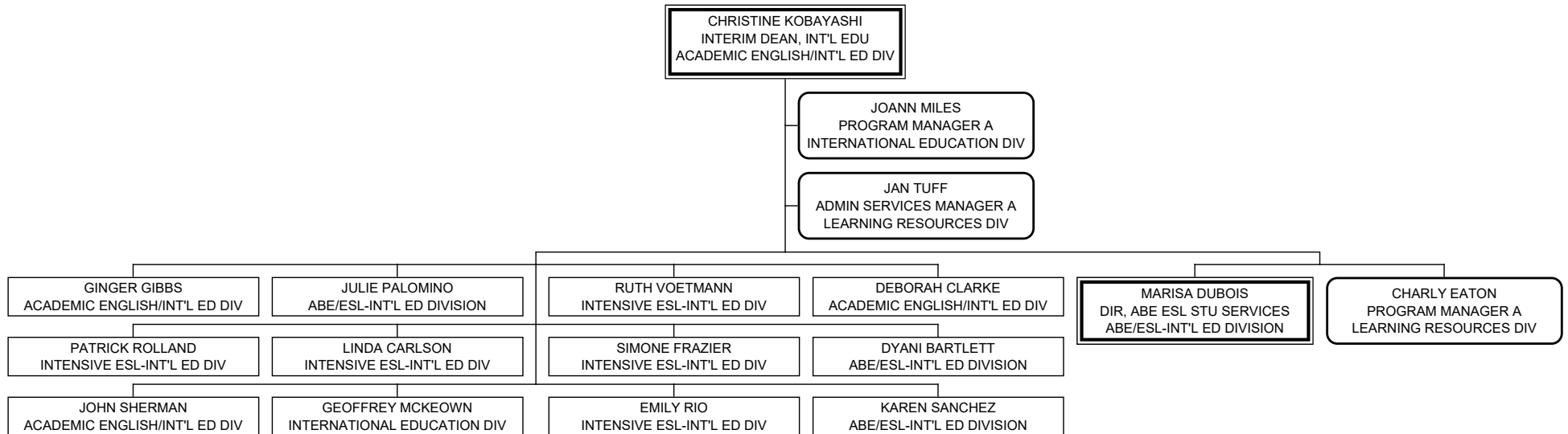


# EDMONDS COMMUNITY COLLEGE

## SCI/TECH/ENG/MATH DIV (STEM)



**EDMONDS COMMUNITY COLLEGE**  
ACADEMIC ENGLISH/INT'L ED DIV



# EDMONDS COMMUNITY COLLEGE

## INTERNATIONAL EDUCATION DIV

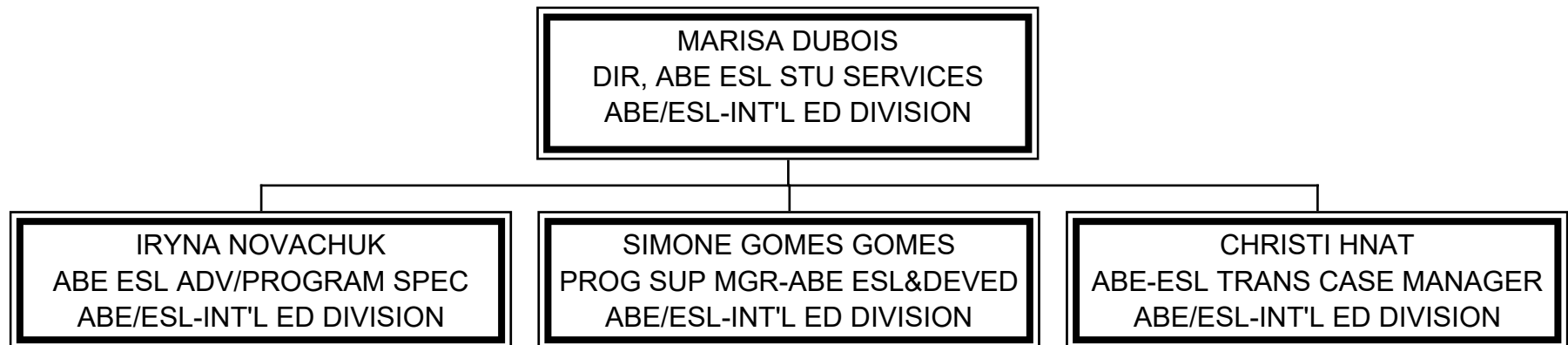
JOANN MILES  
PROGRAM MANAGER A  
INTERNATIONAL EDUCATION DIV

YELENA NAUMCHIK  
SECRETARY SENIOR  
INTERNATIONAL EDUCATION DIV



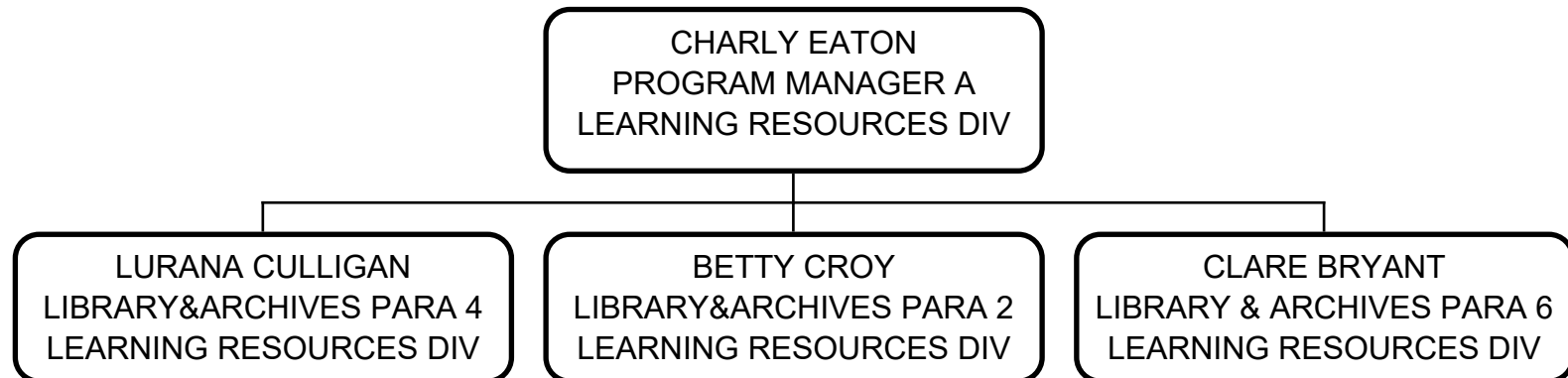
# EDMONDS COMMUNITY COLLEGE

## ABE/ESL~INT'L ED DIVISION



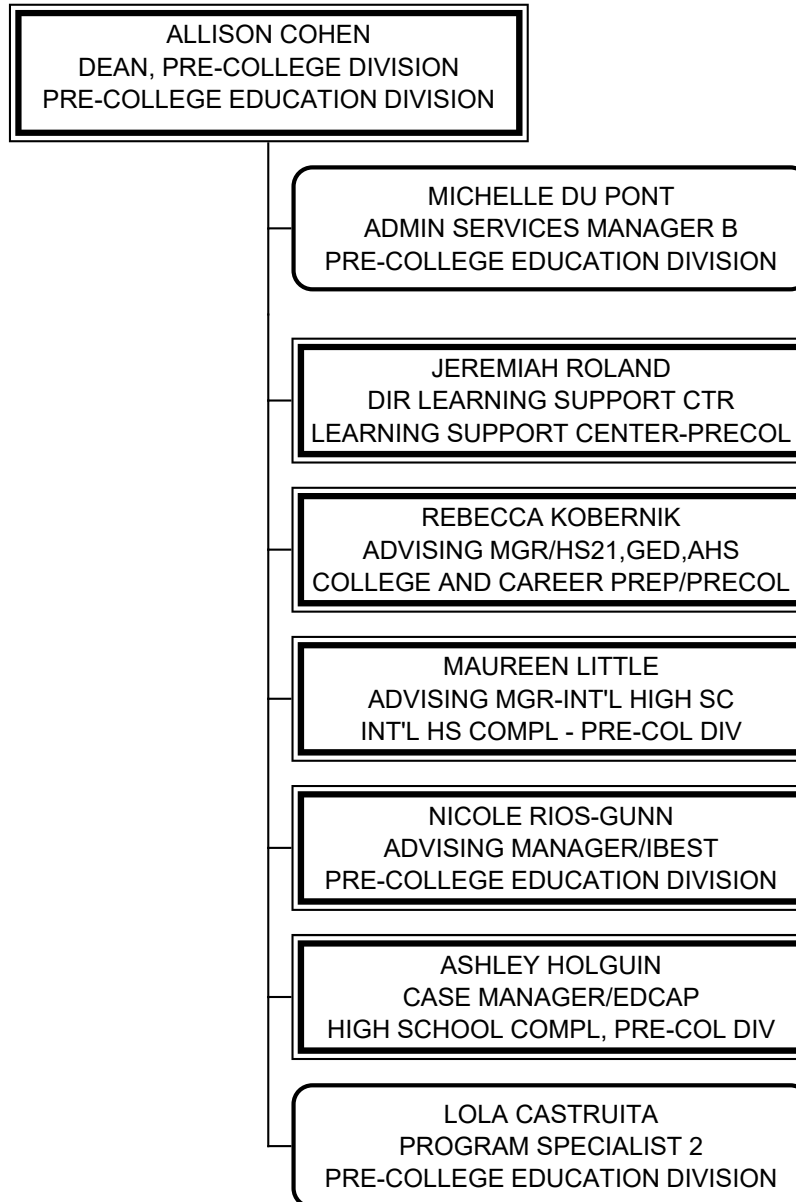
# EDMONDS COMMUNITY COLLEGE

## LEARNING RESOURCES DIV



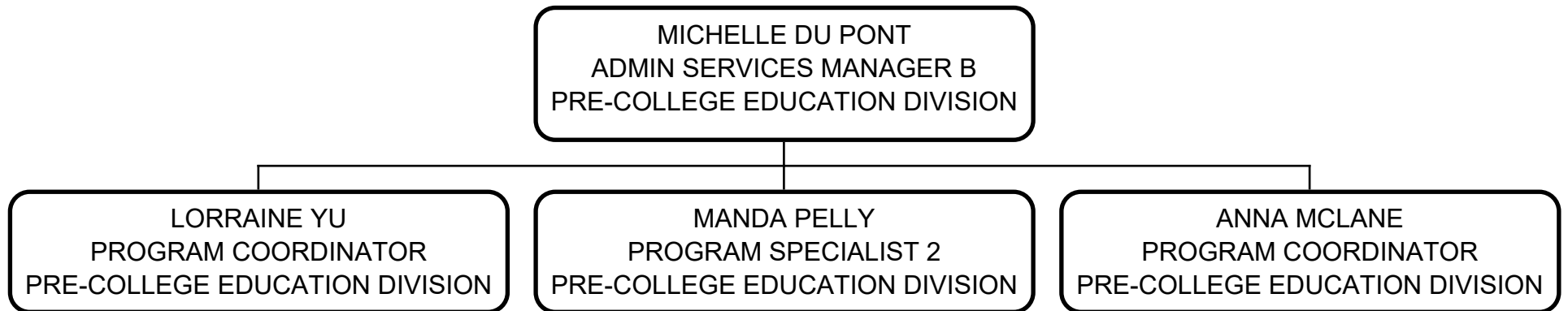
# EDMONDS COMMUNITY COLLEGE

## PRE-COLLEGE EDUCATION DIVISION



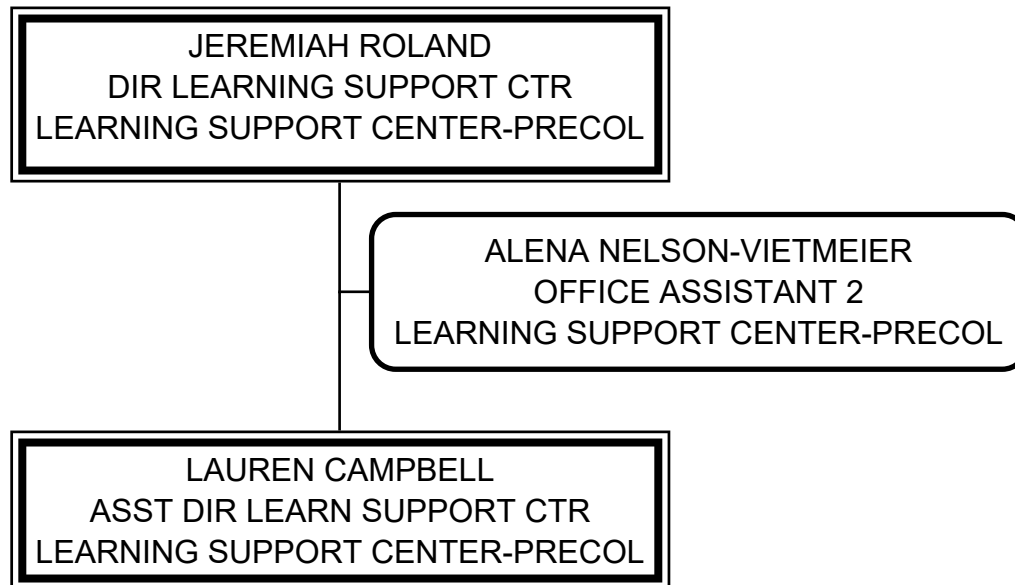
# EDMONDS COMMUNITY COLLEGE

## PRE-COLLEGE EDUCATION DIVISION



# EDMONDS COMMUNITY COLLEGE

## LEARNING SUPPORT CENTER-PRECOL



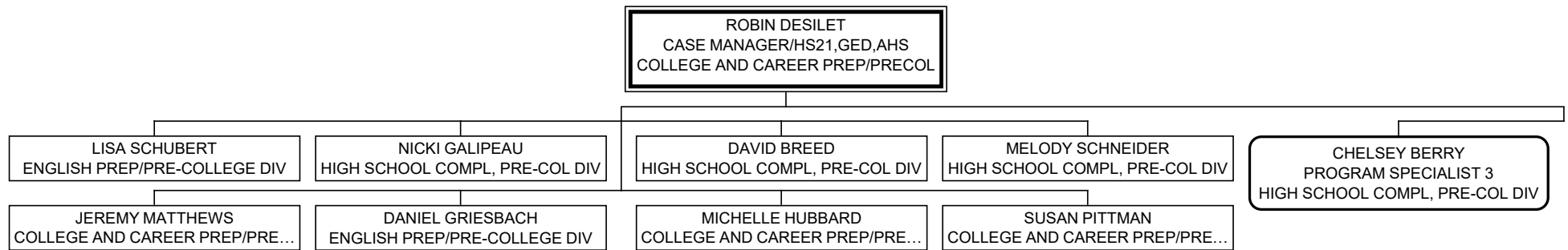
# EDMONDS COMMUNITY COLLEGE

## COLLEGE AND CAREER PREP/PRECOL

REBECCA KOBERNIK  
ADVISING MGR/HS21,GED,AHS  
COLLEGE AND CAREER PREP/PRECOL

ROBIN DESILET  
CASE MANAGER/HS21,GED,AHS  
COLLEGE AND CAREER PREP/PRECOL

**EDMONDS COMMUNITY COLLEGE**  
COLLEGE AND CAREER PREP/PRECOL



# EDMONDS COMMUNITY COLLEGE

## INT'L HS COMPL ~ PRE-COL DIV

MAUREEN LITTLE  
ADVISING MGR-INT'L HIGH SC  
INT'L HS COMPL - PRE-COL DIV

ANN DINH  
CASE MGR/INT'L HIGH SCHOOL  
INT'L HS COMPL - PRE-COL DIV



# EDMONDS COMMUNITY COLLEGE

## PRE-COLLEGE EDUCATION DIVISION

NICOLE RIOS-GUNN  
ADVISING MANAGER/IBEST  
PRE-COLLEGE EDUCATION DIVISION

MEGHAN ANDREW  
I-BEST CASE MANAGER, ESL  
PRE-COLLEGE EDUCATION DIVISION

# EDMONDS COMMUNITY COLLEGE

## HIGH SCHOOL COMPL, PRE-COL DIV

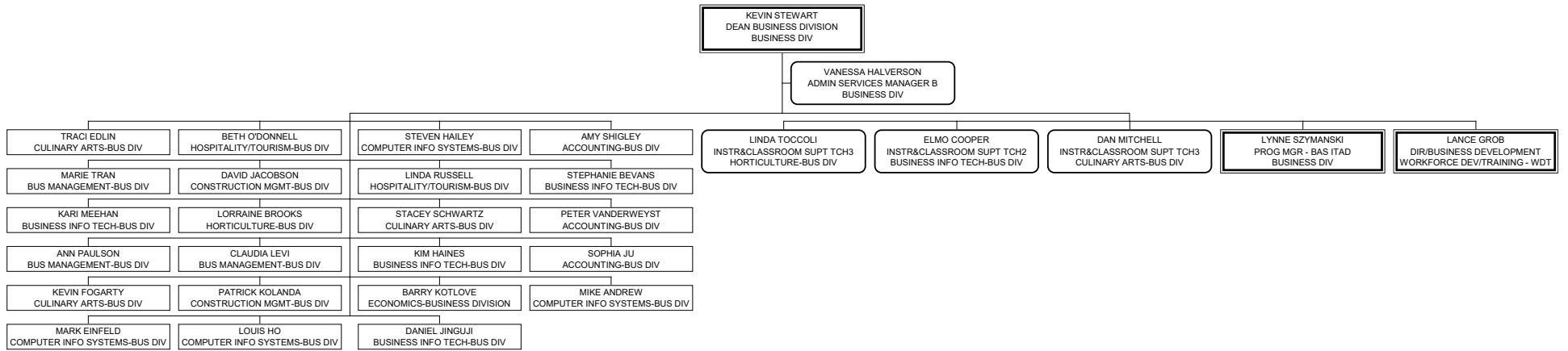
ASHLEY HOLGUIN  
CASE MANAGER/EDCAP  
HIGH SCHOOL COMPL, PRE-COL DIV

MAIZY BROWN  
CASE MANAGER/HS21,GED,AHS  
HIGH SCHOOL COMPL, PRE-COL DIV

CLAY MCBRIDE  
CASE MANAGER/HS21,GED,AHS  
HIGH SCHOOL COMPL, PRE-COL DIV

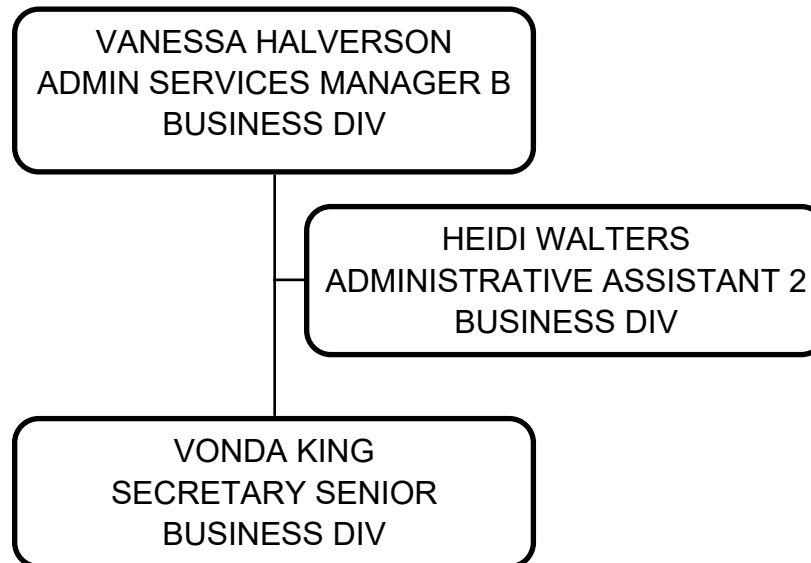
JAMAL JAMAL  
CASE MANAGER/EDCAP  
HIGH SCHOOL COMPL, PRE-COL DIV

EDMONDS COMMUNITY COLLEGE  
BUSINESS DIV



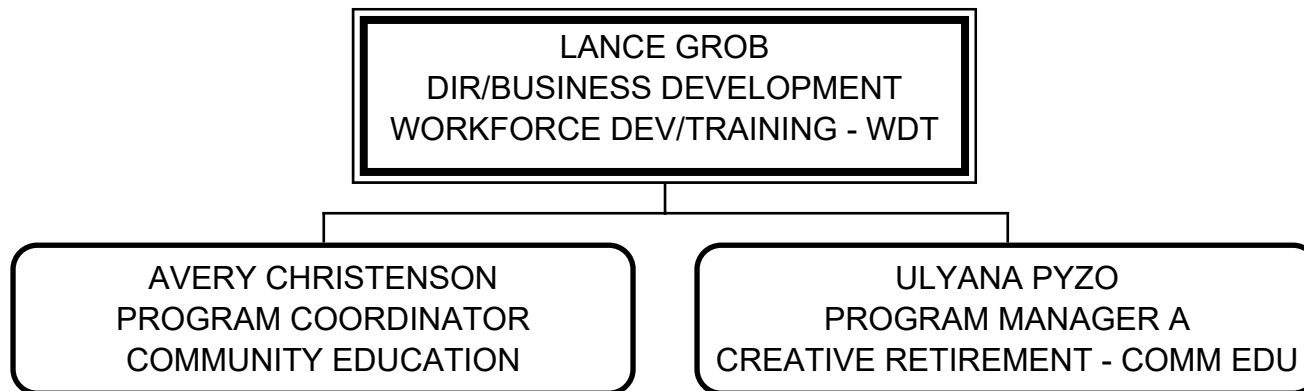
# EDMONDS COMMUNITY COLLEGE

## BUSINESS DIV



# EDMONDS COMMUNITY COLLEGE

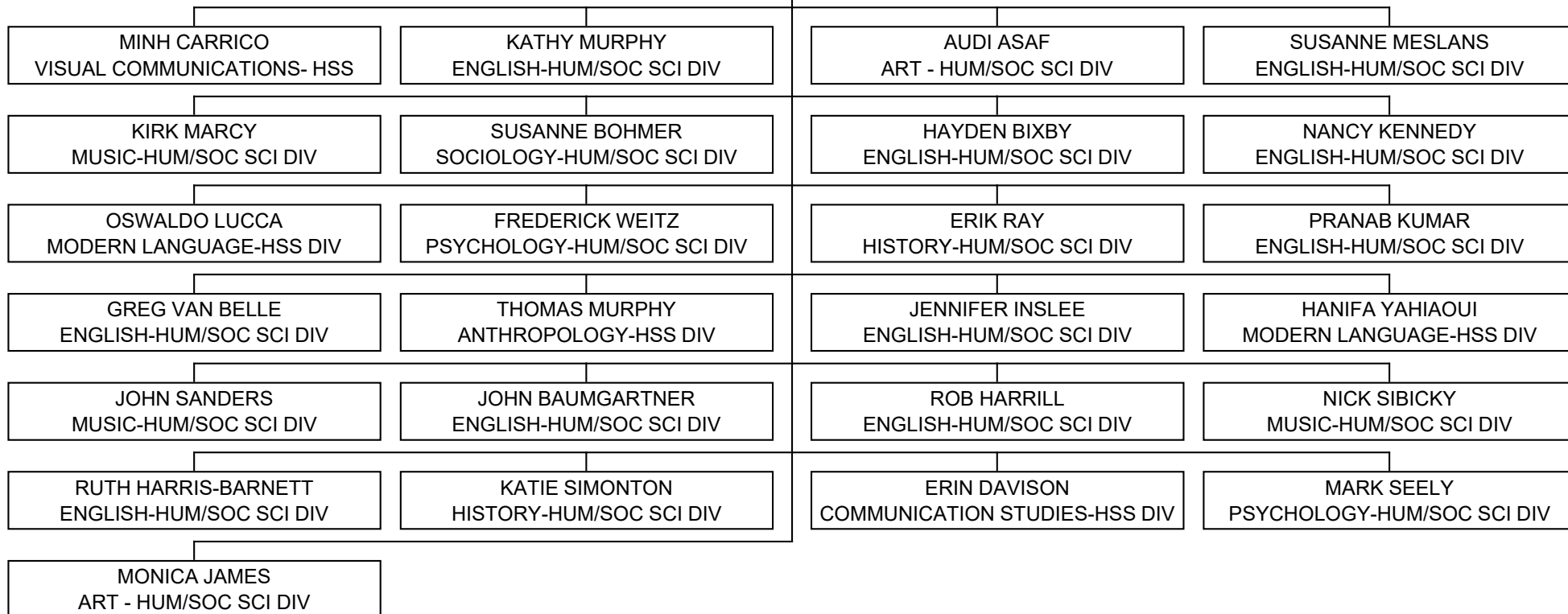
## WORKFORCE DEV/TRAINING - WDT



# EDMONDS COMMUNITY COLLEGE

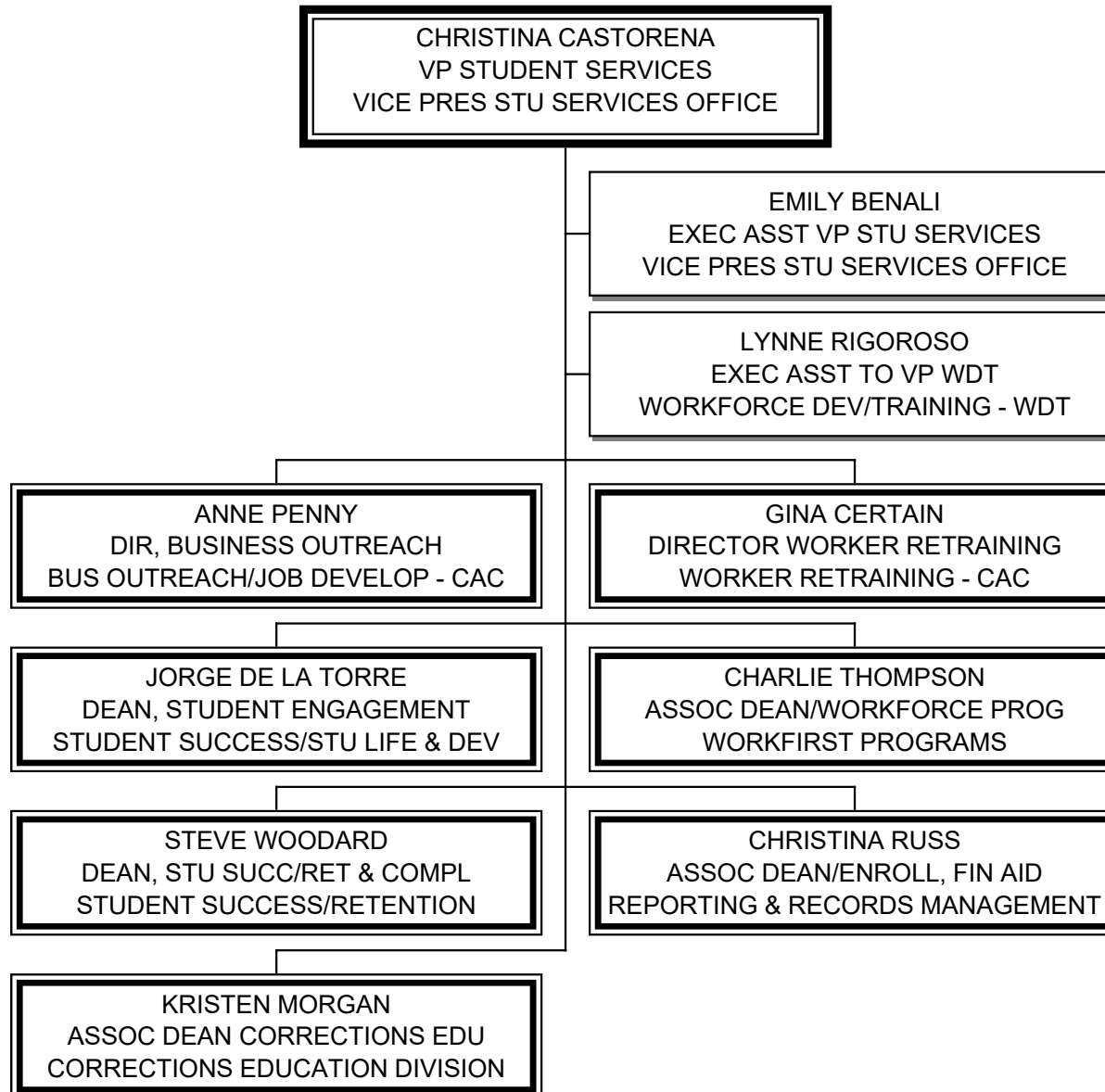
## POLITICAL SCIENCE~HSS DIV

**ROBIN DATTA**  
 INTERIM DEAN HUMANITIES/SS  
 POLITICAL SCIENCE-HSS DIV



# EDMONDS COMMUNITY COLLEGE

## VICE PRES STU SERVICES OFFICE



# EDMONDS COMMUNITY COLLEGE

## WORKFORCE DEV/TRAINING - WDT

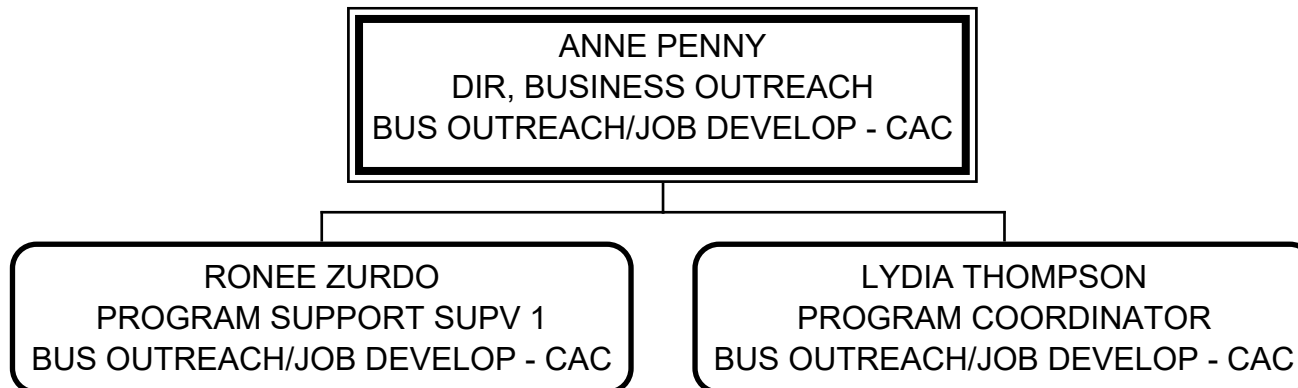
LYNNE RIGOROSO  
EXEC ASST TO VP WDT  
WORKFORCE DEV/TRAINING - WDT

ARUTYUN SARGSYAN  
OFFICE ASSISTANT 3  
MARKETING & PUBLIC INFORMATION



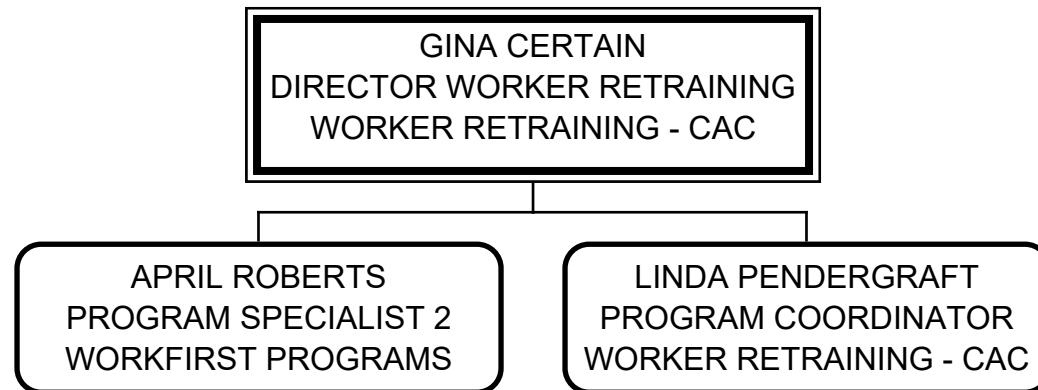
# EDMONDS COMMUNITY COLLEGE

## BUS OUTREACH/JOB DEVELOP ~ CAC



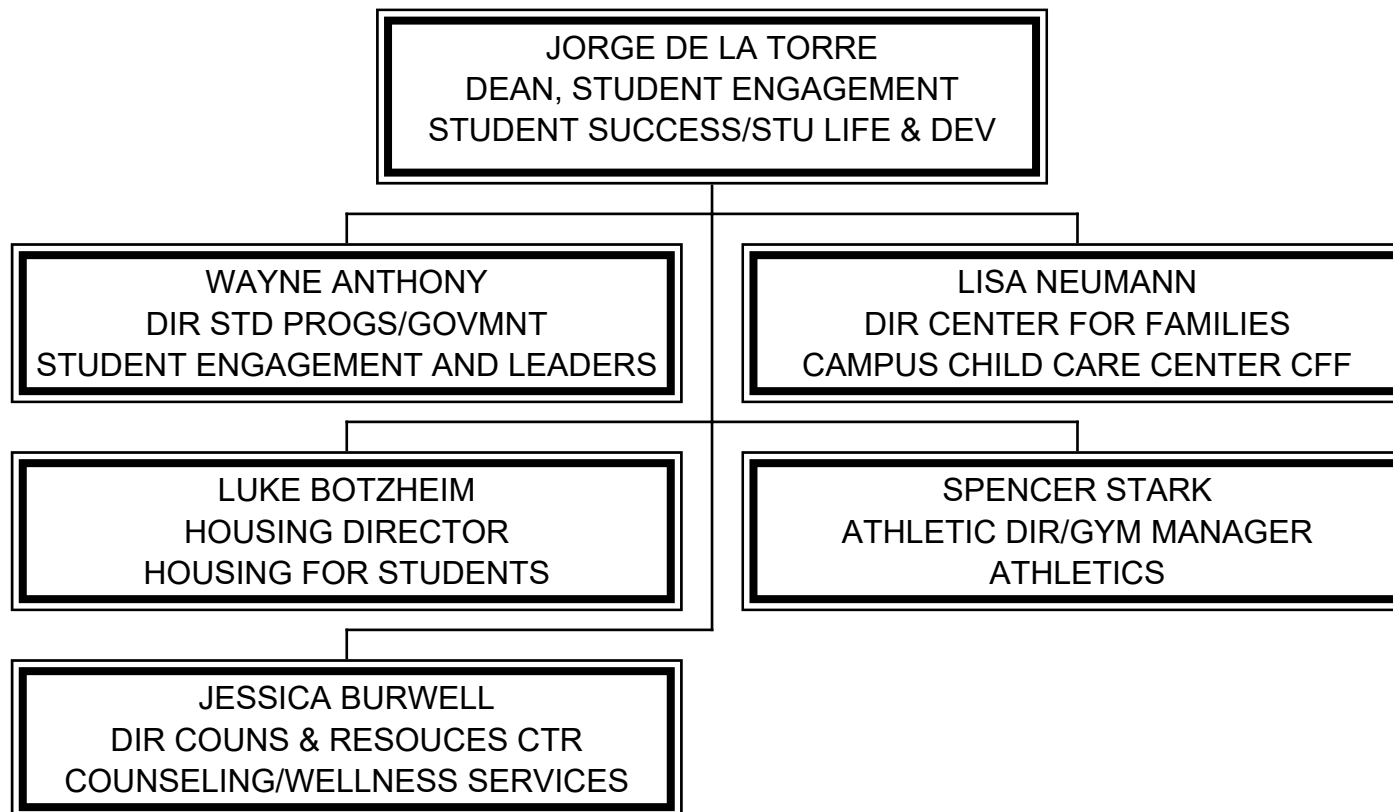
# EDMONDS COMMUNITY COLLEGE

## WORKER RETRAINING - CAC



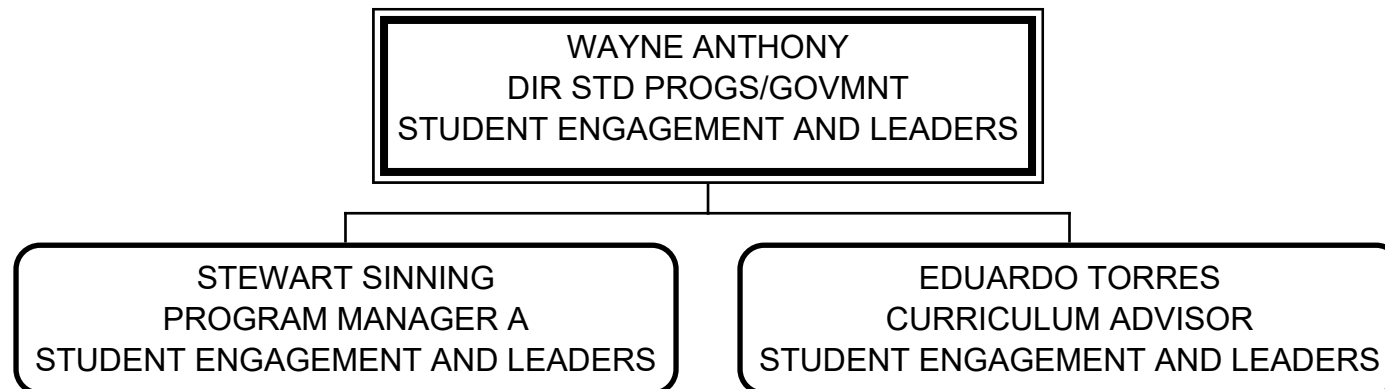
# EDMONDS COMMUNITY COLLEGE

## STUDENT SUCCESS/STU LIFE & DEV



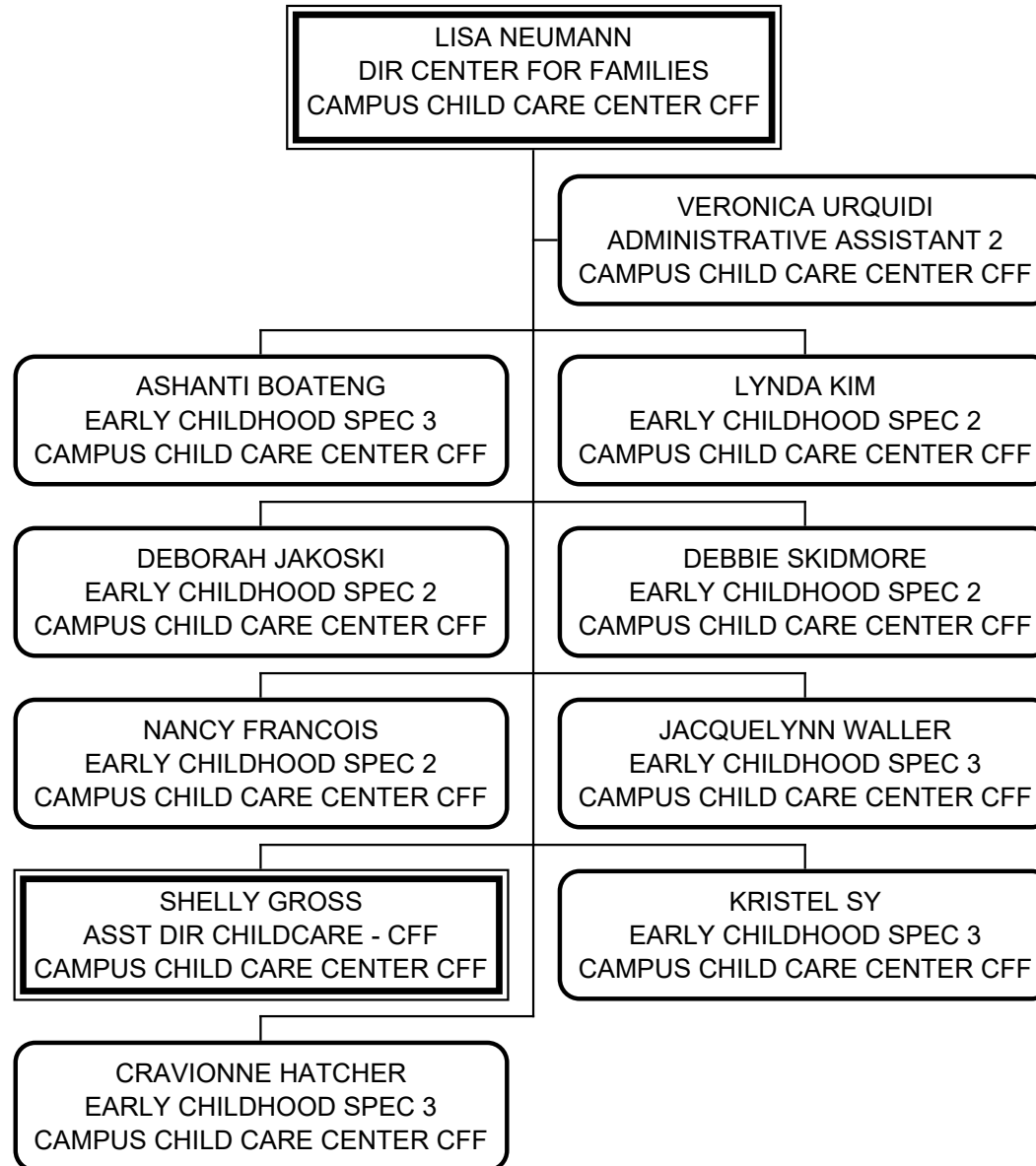
# EDMONDS COMMUNITY COLLEGE

## STUDENT ENGAGEMENT AND LEADERS



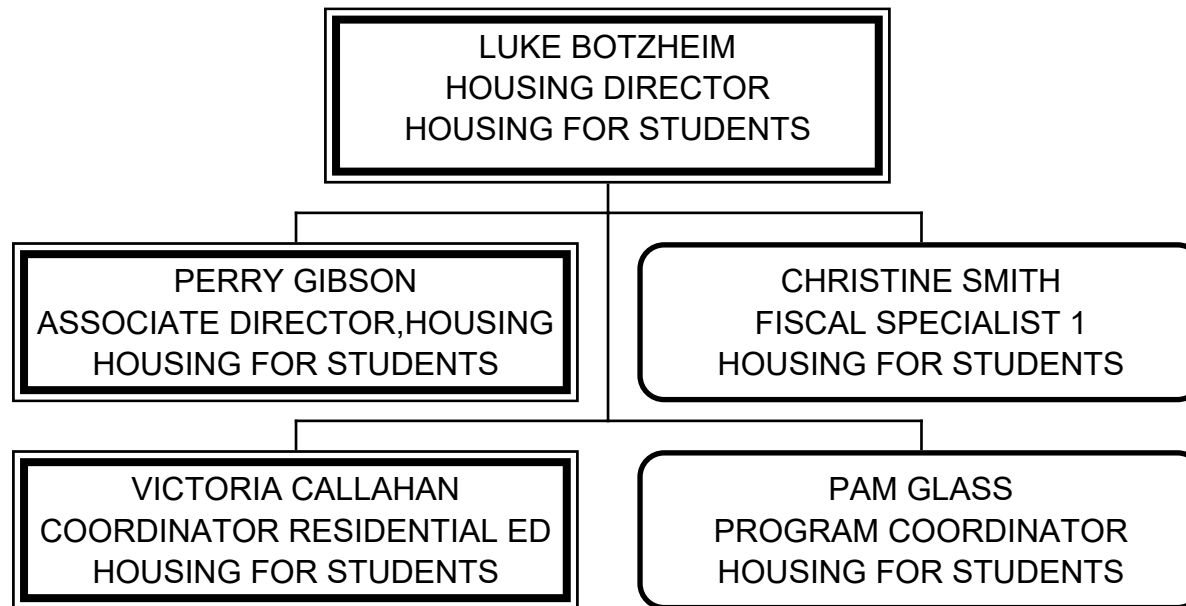
# EDMONDS COMMUNITY COLLEGE

## CAMPUS CHILD CARE CENTER CFF

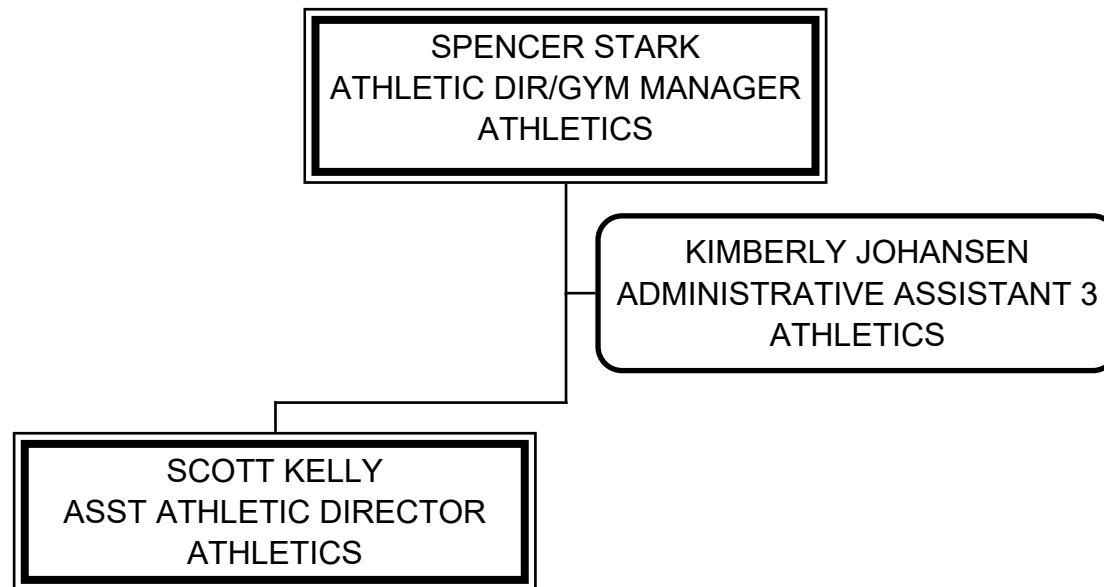


# EDMONDS COMMUNITY COLLEGE

## HOUSING FOR STUDENTS



# EDMONDS COMMUNITY COLLEGE ATHLETICS



# EDMONDS COMMUNITY COLLEGE

## COUNSELING/WELLNESS SERVICES

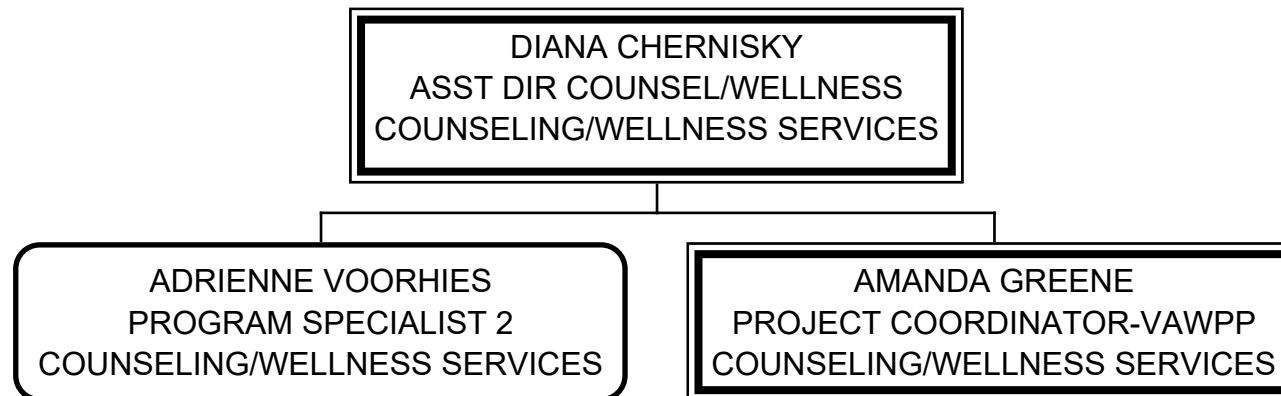
JESSICA BURWELL  
DIR COUNS & RESOUCES CTR  
COUNSELING/WELLNESS SERVICES

DIANA CHERNISKY  
ASST DIR COUNSEL/WELLNESS  
COUNSELING/WELLNESS SERVICES



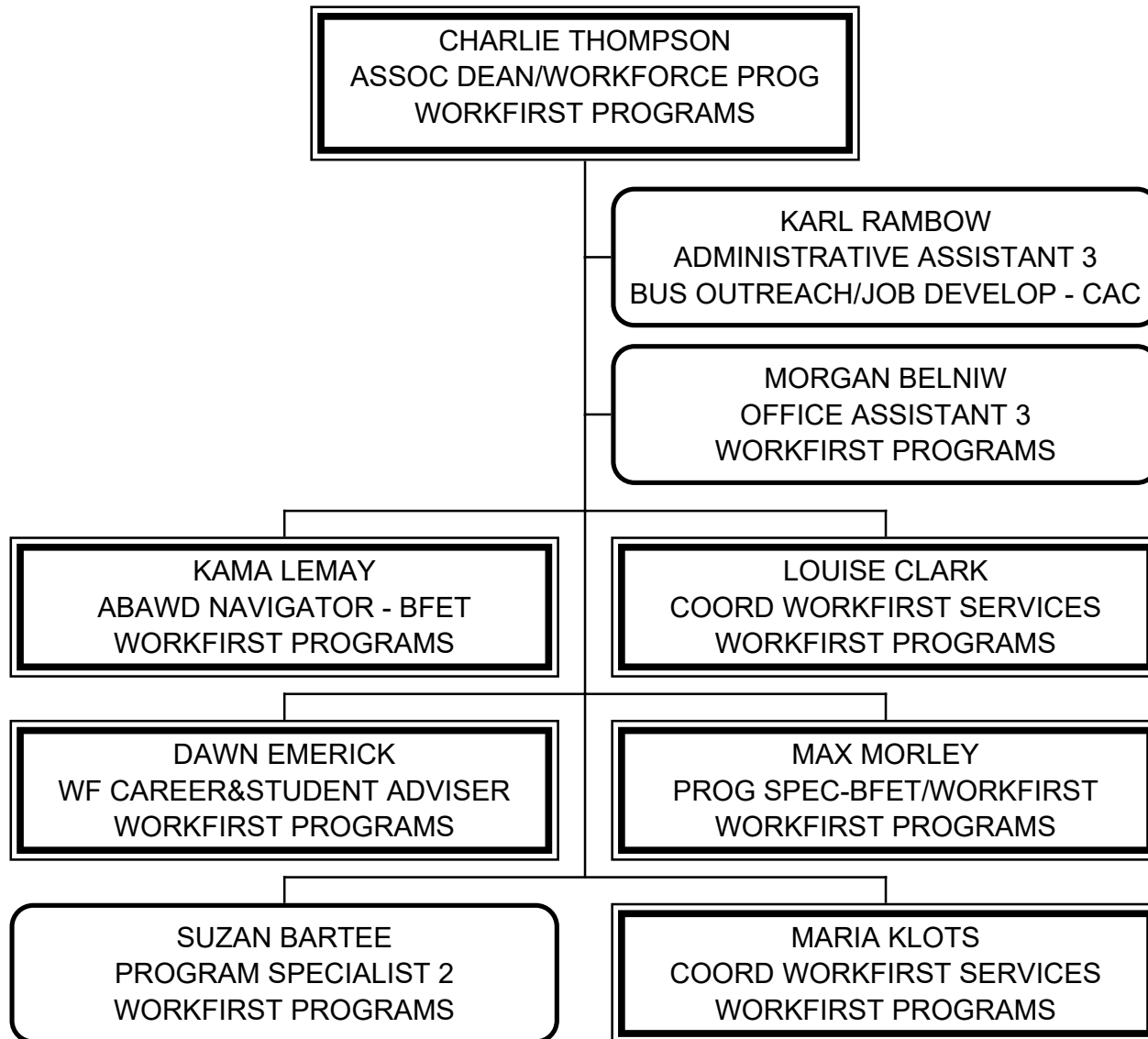
# EDMONDS COMMUNITY COLLEGE

## COUNSELING/WELLNESS SERVICES



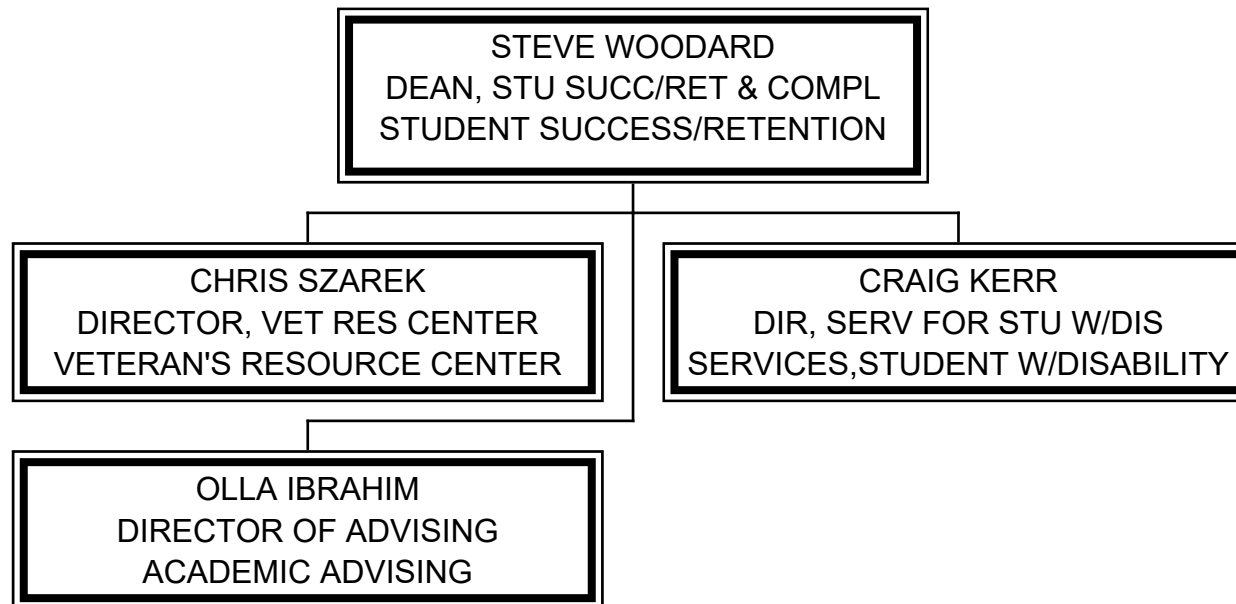
# EDMONDS COMMUNITY COLLEGE

## WORKFIRST PROGRAMS



# EDMONDS COMMUNITY COLLEGE

## STUDENT SUCCESS/RETENTION



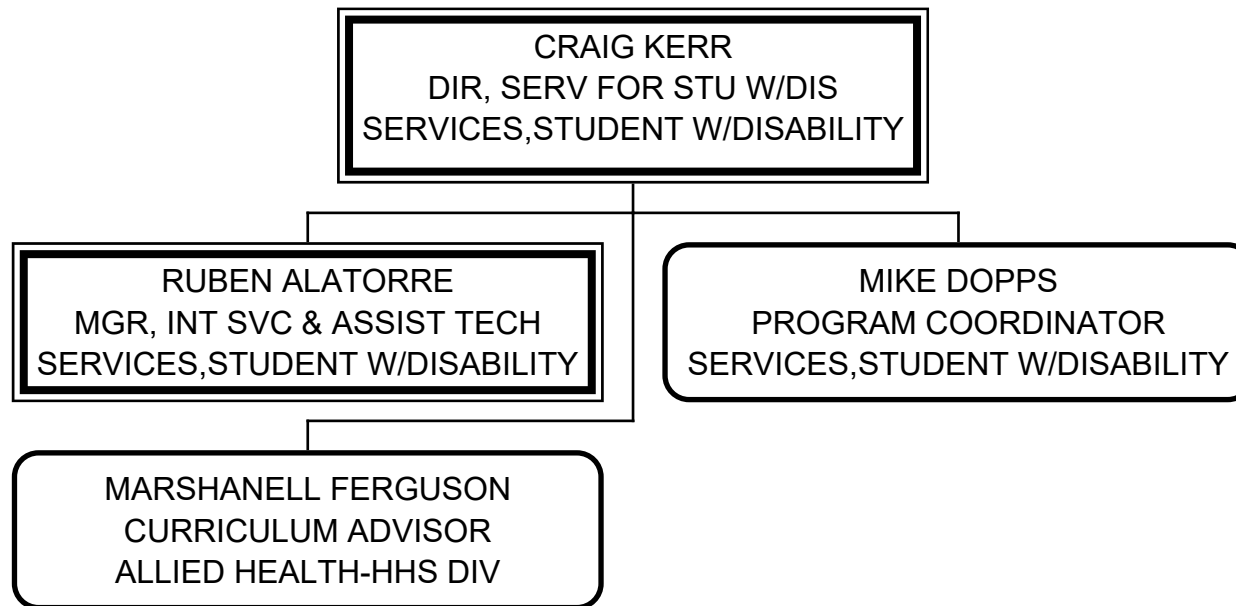
# EDMONDS COMMUNITY COLLEGE VETERAN'S RESOURCE CENTER

CHRIS SZAREK  
DIRECTOR, VET RES CENTER  
VETERAN'S RESOURCE CENTER

GLORIA ELLIOTT  
PROGRAM MANAGER A  
VETERAN'S RESOURCE CENTER

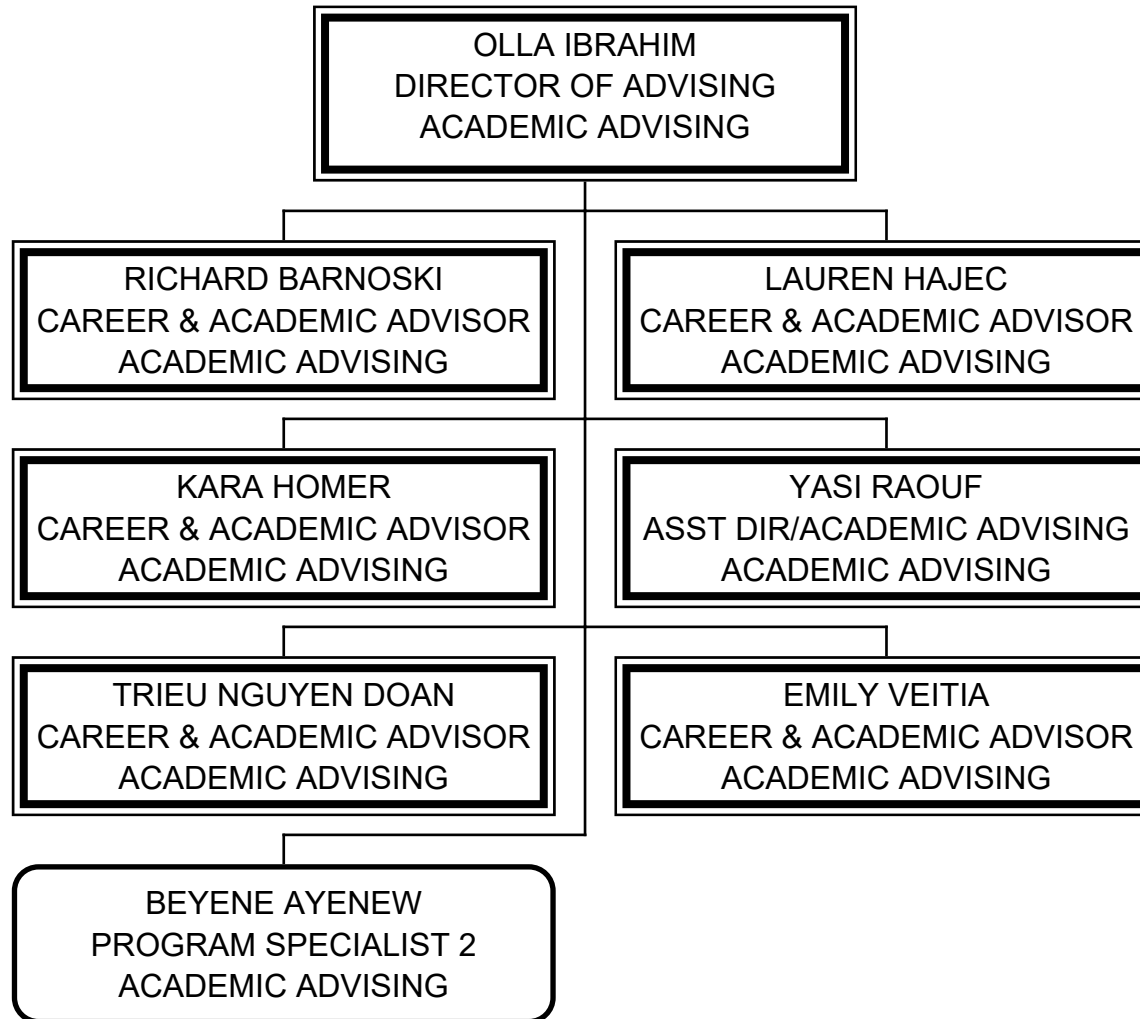
# EDMONDS COMMUNITY COLLEGE

## SERVICES,STUDENT W/DISABILITY



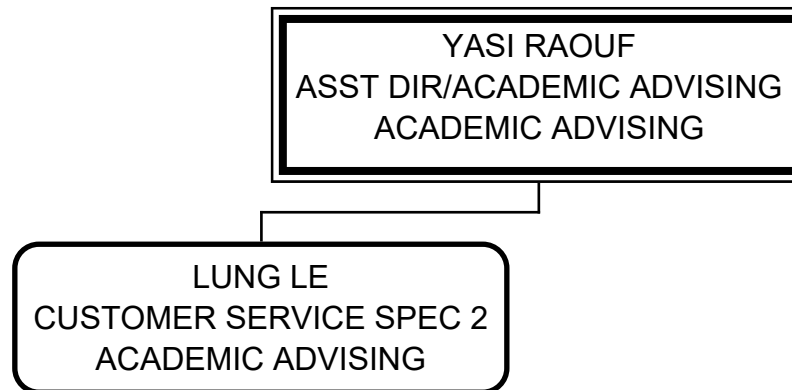
# EDMONDS COMMUNITY COLLEGE

## ACADEMIC ADVISING



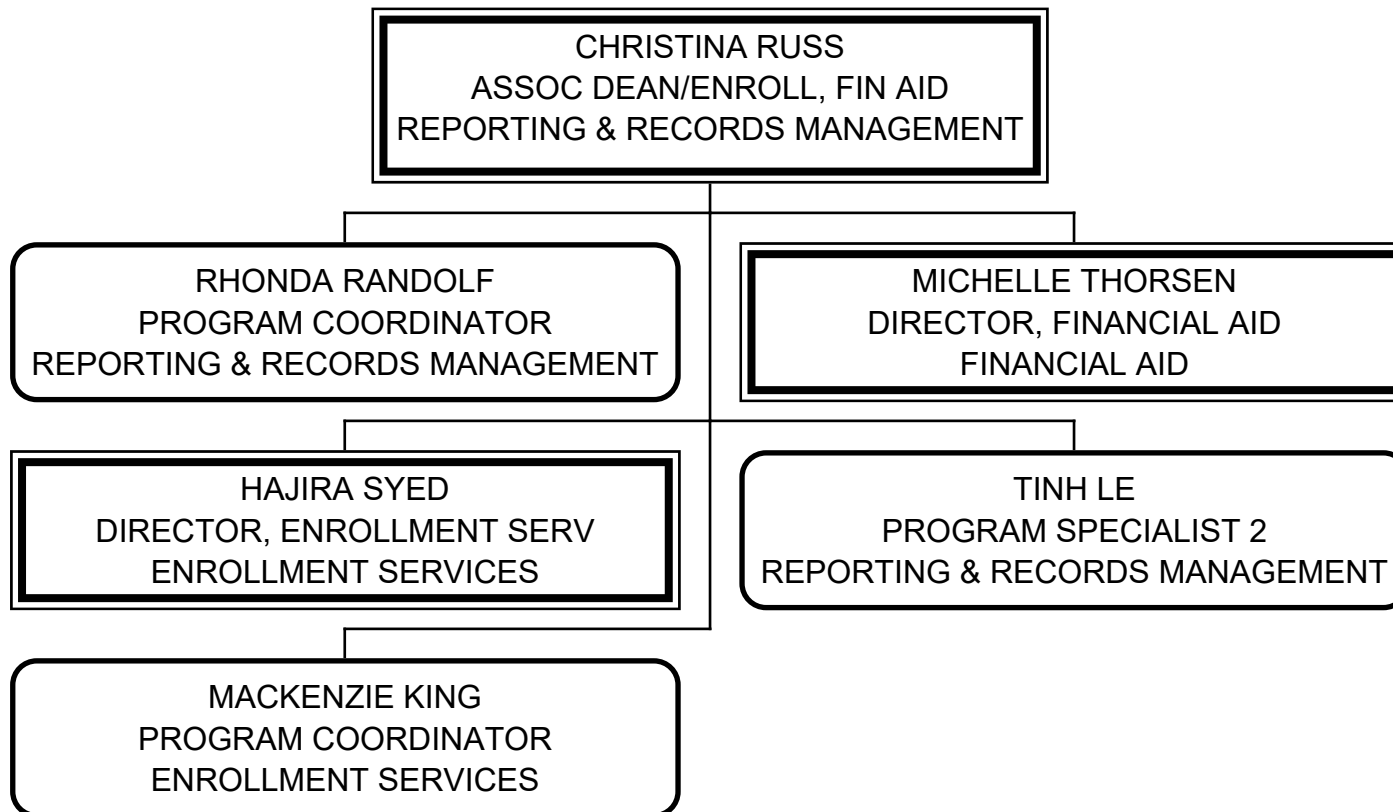
# EDMONDS COMMUNITY COLLEGE

## ACADEMIC ADVISING



# EDMONDS COMMUNITY COLLEGE

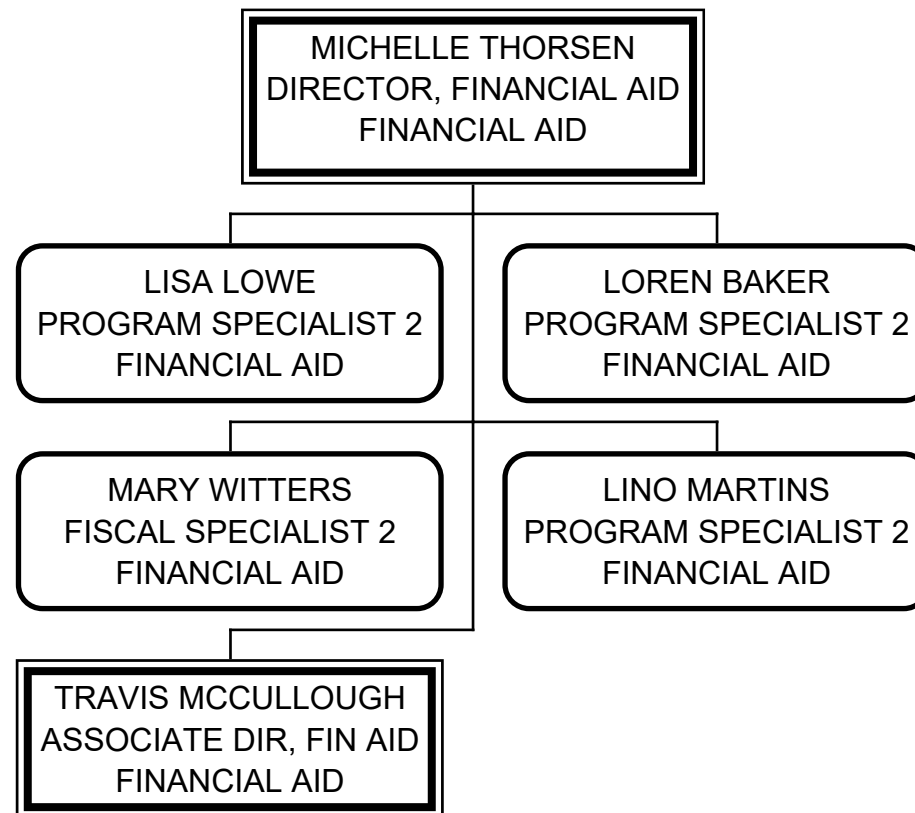
## REPORTING & RECORDS MANAGEMENT





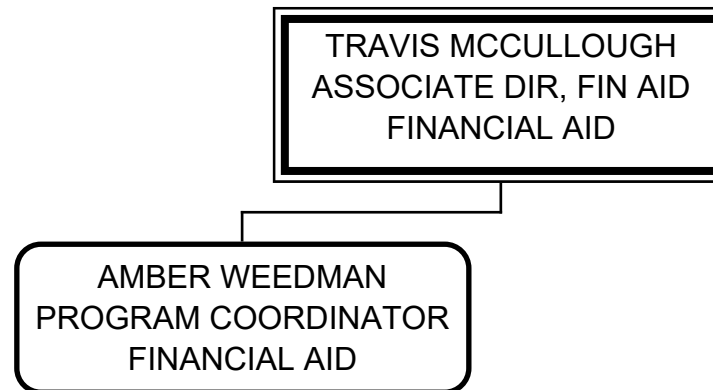
# EDMONDS COMMUNITY COLLEGE

## FINANCIAL AID



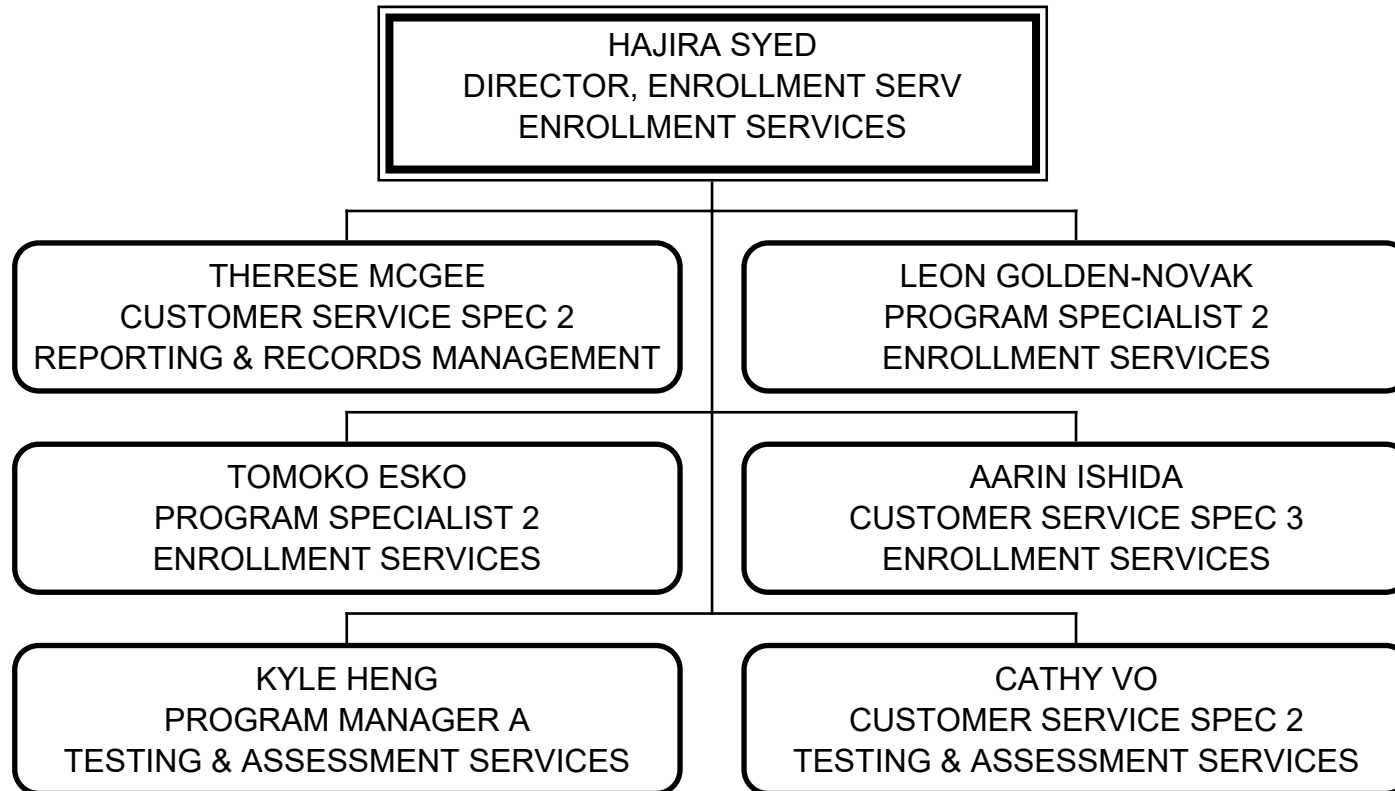
# EDMONDS COMMUNITY COLLEGE

## FINANCIAL AID



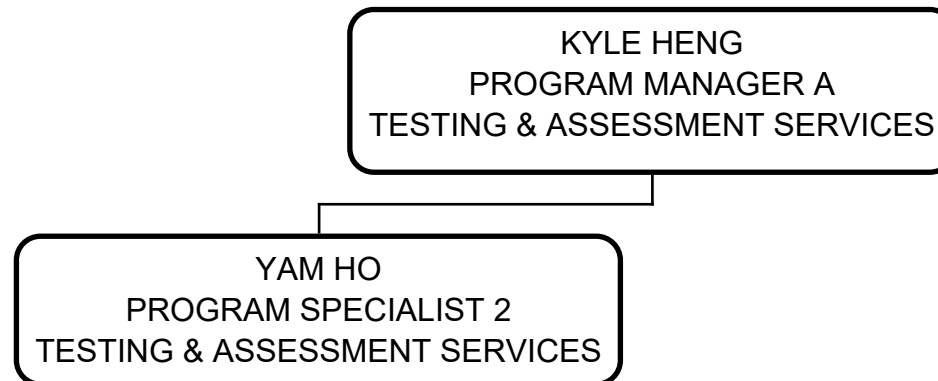
# EDMONDS COMMUNITY COLLEGE

## ENROLLMENT SERVICES

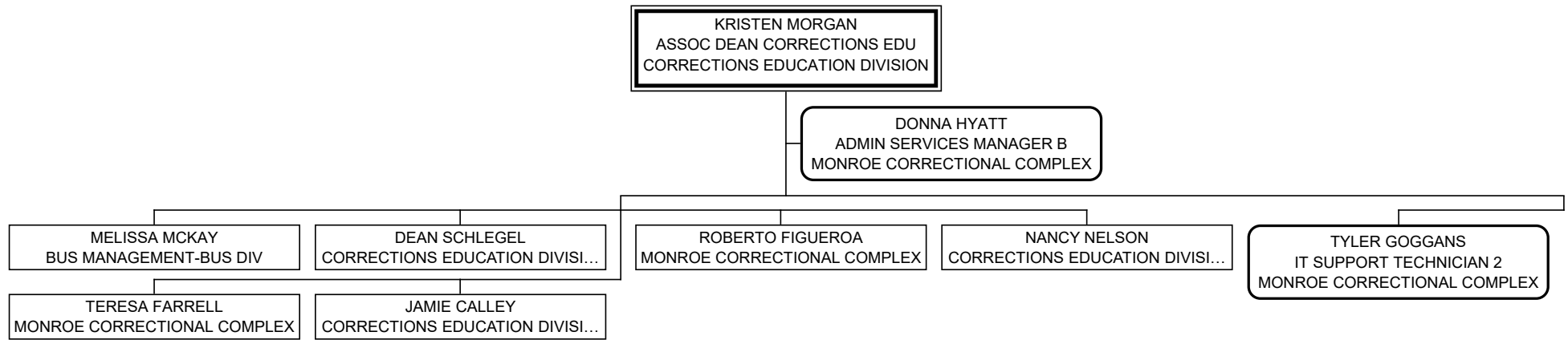


# EDMONDS COMMUNITY COLLEGE

## TESTING & ASSESSMENT SERVICES



EDMONDS COMMUNITY COLLEGE  
CORRECTIONS EDUCATION DIVISION



# EDMONDS COMMUNITY COLLEGE

## MONROE CORRECTIONAL COMPLEX

