

Singh, Amit
PRESIDENT
Office of the President

Nyquist, Kristen
DIR, PLANNING&OPS,PRES OFF
Office of the President



Carnes, Danielle
VP INNOV&STRATEGIC PARTNSP
Strategic Initiatives Office



Chapman, Kimberly
VP of Instruction
Office of the President



Mulik, James
VP FIN, GRANTS & INST EFFECTIV
VP of Fin, Grants, and IE



Jeter-Hill, Jade
DIR,SAFETY/SECUR&EMER PREP
Campus Safety/Security



Terrell-Powell, Yvonne
VP FOR EQUITY & INCLUSION
Equity and Inclusion



Smith, Eva
CHIEF INFORMATION OFFICER
Information Technology



Hart, Christina
VP ENRLL. & STU SERV
Vice Pres Stu Services Office



Szarek, Christopher
EX DIR, FACIL/OPS/CAP PROJ
Facilities Planning/Operations



De La Torre, Jorge
Intrm AVP Stu. Success & Engag
Student Success/Stu Life & Dev



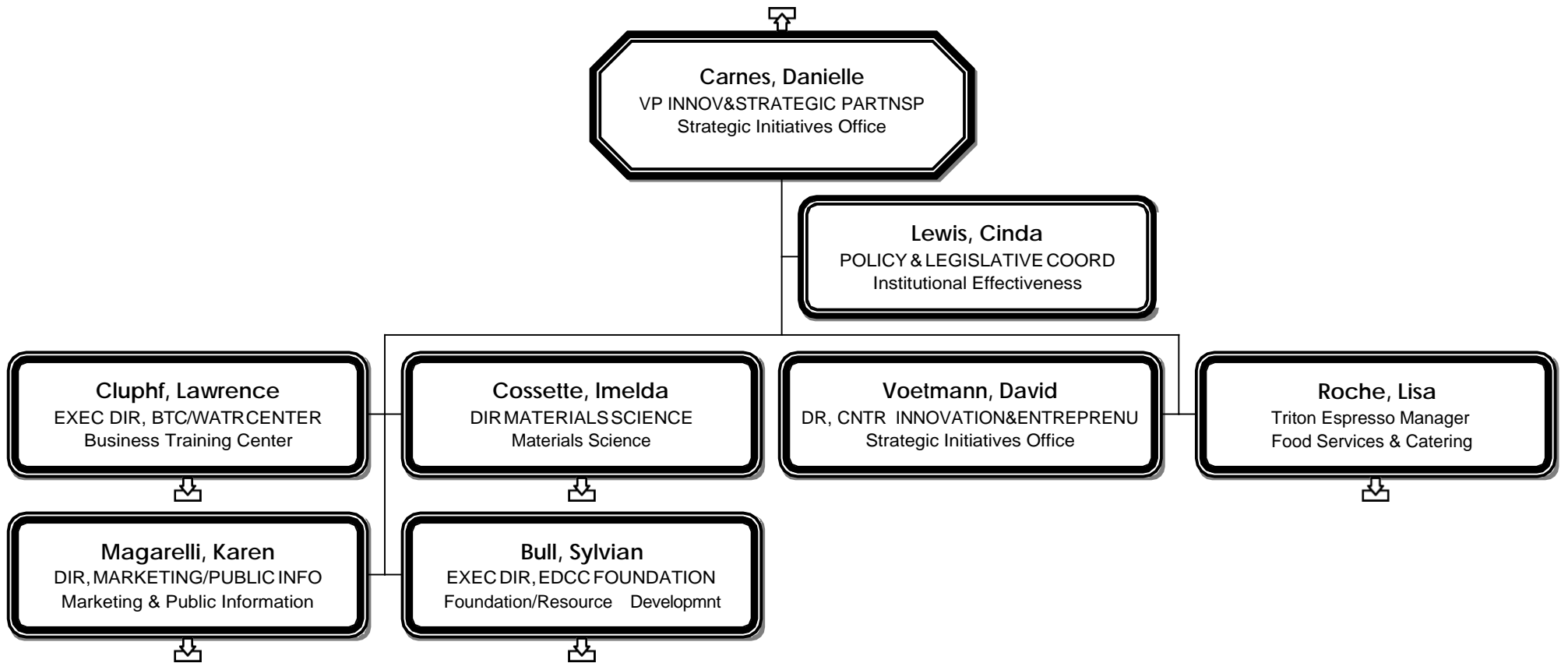
King, Casey
Senior Dir, Human Resources
Human Resources





Nyquist, Kristen
DIR, PLANNING&OPS,PRES OFF
Office of the President

Holcomb, Susan
ADMINISTRATIVE ASSISTANT 4
Office of the President





Cluphf, Lawrence
EXEC DIR, BTC/WATR CENTER
Business Training Center

Wilson, Brian
FACILITATOR 2
Business TrainingCenter

Brown, Brian
FACILITATOR 2
Business TrainingCenter

Ybarra, Janice
ADMIN SERVICES MANAGER B
Business Training Center

Cianci, Damiano
INTERIM DIR BTC/WATR CTR
Computer/Technology Train-BTC



Norris, Randall
FACILITATOR 2
Business TrainingCenter

Miller, Randall
FACILITATOR 2
Business TrainingCenter

Aquino, Jose
FACILITATOR 2
Business TrainingCenter

Dersham, Shelia
ASSOCIATE DIRECTOR, WATR
Business Training Center



Fronheiser, Ronald
FACILITATOR 2
Business TrainingCenter

Brackett, William
FACILITATOR 2
Business TrainingCenter

Liddell, Kimo
FACILITATOR 2
Business TrainingCenter

Farnum, Bradley
FACILITATOR 2
Business Training Center

Antunez Murguia, Sergio
FACILITATOR 2
Business Training Center

Deniega, Marlon
FACILITATOR 2
Business TrainingCenter

Pierotti, Rikki
ASSOCIATE DIRECTOR, TRADES
Business Training Center

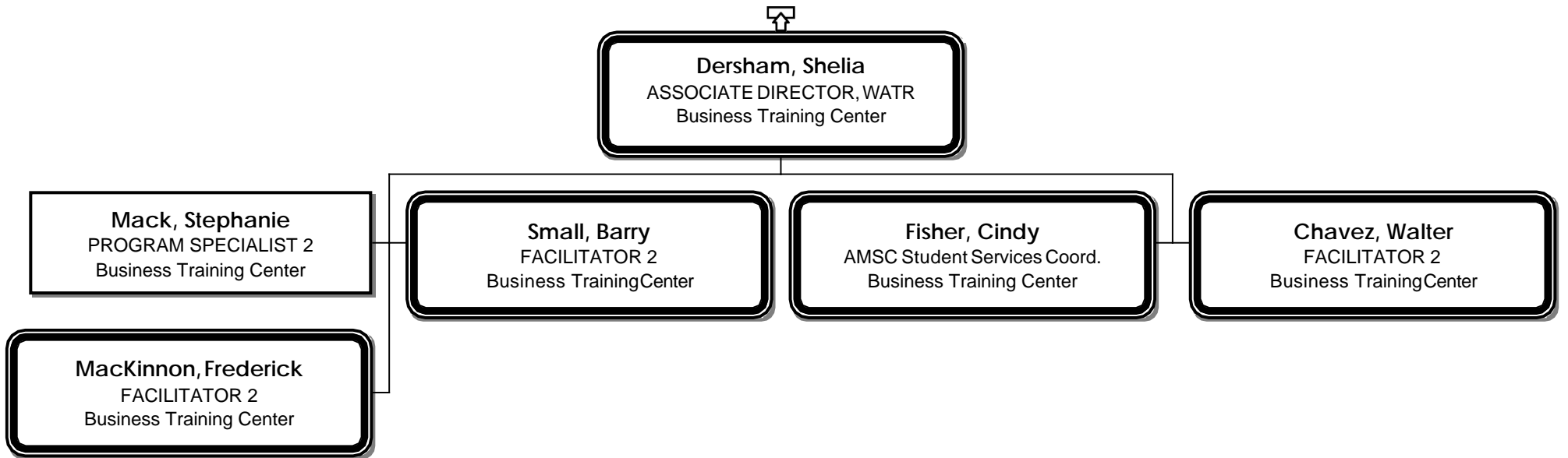
Werth, James
MARKETING MANAGER-WATR CTR
Business Training Center



Ybarra, Janice
ADMIN SERVICES MANAGER B
Business Training Center

Wickline, Lacey
ADMIN SERVICES MANAGER C
Business Training Center

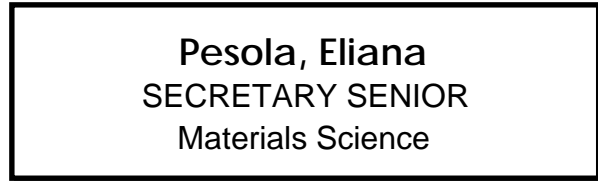






Cossette, Imelda
DIR MATERIALS SCIENCE
Materials Science

Pesola, Eliana
SECRETARY SENIOR
Materials Science

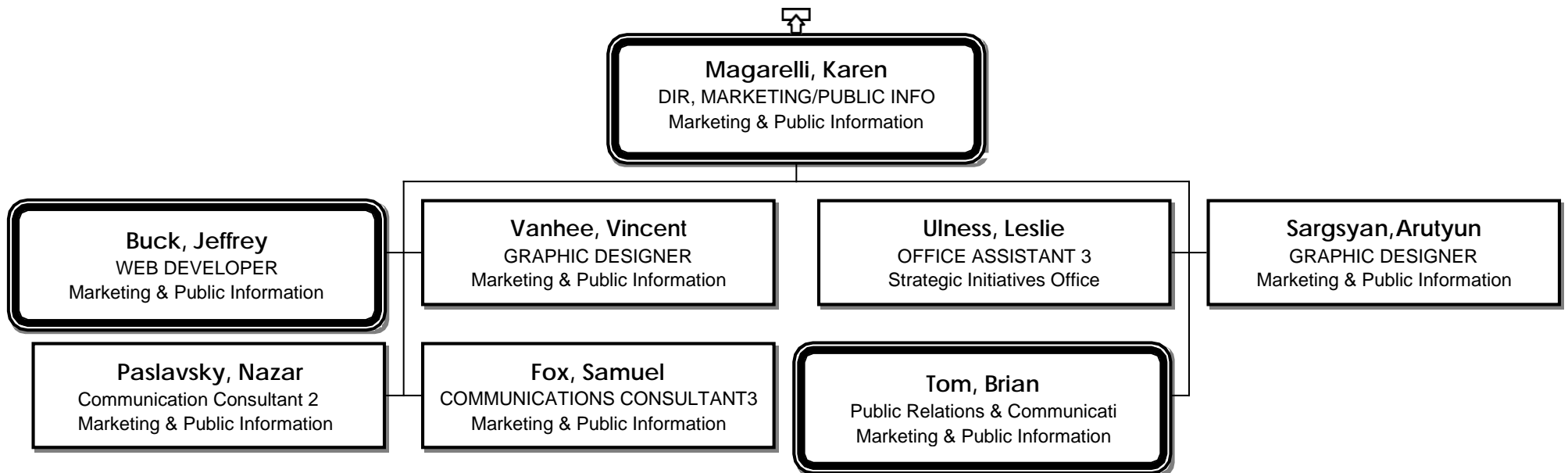




Roche, Lisa
Triton Espresso Manager
Food Services & Catering

Roeter, Jennifer
Kitchen & Catering Manager
Food Services & Catering



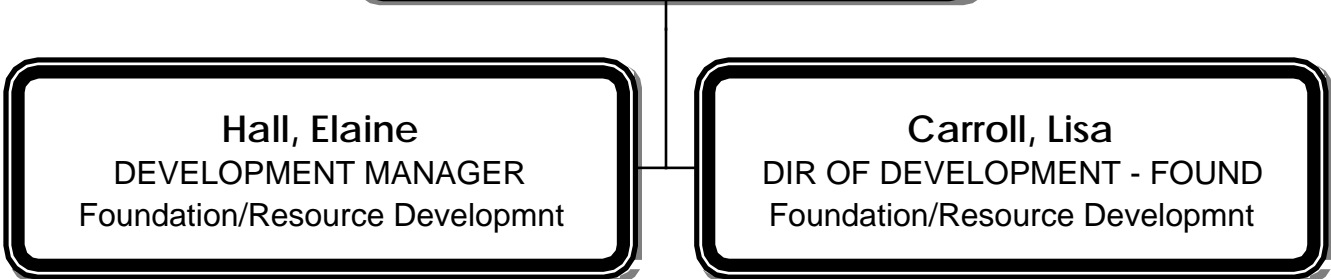




Bull, Sylvian
EXEC DIR, EDCC FOUNDATION
Foundation/Resource Developmnt

Hall, Elaine
DEVELOPMENT MANAGER
Foundation/Resource Developmnt

Carroll, Lisa
DIR OF DEVELOPMENT - FOUND
Foundation/Resource Developmnt





Chapman, Kimberly
 VP of Instruction
 Office of the President

Schroyer, Carey
 DEAN SCI TECH ENGMATH DIV
 Sci/Tech/Eng/Math Div (STEM)



Lagrutta, Kristi
 SENIOR DIRECTOR WORKFORCE
 Workforce Dev/Training - WDT



Cohen, Allison
 DEAN, PRE-COLLEGE DIVISION
 Pre-College Education Division



Clements, Ardath
 ADMIN SERVICES MANAGER C
 EVP for Instruction Office

Kobayashi, Elizabeth
 Dean, Int'l Edu
 Academic English/Int'l Ed Div



Lefrancois-Hanson, Katrina
 Interim Assistant Dean
 EVP for Instruction Office

Townsend, Karen
 DEAN HEALTH HUMAN SERVICES
 Health/Human Services Div



Murata, Claire
 Associate Dean of Library
 Learning Resources Div



Hawkins, Vernon
 DEAN BUSINESS DIVISION
 Business Div



Tierney, Michele
 Mgr. Instructional Operation
 EVP for Instruction Office

Calley, Jamie
 ASSOC DEAN CORRECTIONS EDU
 Corrections Education Division



Nelson, Travis
 DIR, SPECIAL ACADEMIC PROG
 Special Academic Program

Mueth, Elizabeth
 Dir of Curriculum & Scheduling
 EVP for Instruction Office



Williams, Andrew
 INTERIM DEAN HUMANITIES/SS
 Office of the President



Galipeau, Nicole
 DEAN, PRE-COLLEGE DIVISION
 Pre-College Education Division





Schroyer, Carey
 DEAN SCI TECH ENG MATH DIV
 Sci/Tech/Eng/Math Div (STEM)

Nye, Alaina
 FULL TIME FACULTY
 Chemistry/STEM Div

Owens, Jeffrey
 FULL TIME FACULTY
 Chemistry/STEM Div

Hays, Lori
 FULL TIME FACULTY
 Biology-STEM Div

Hanson, Christina
 INSTR&CLASSROOM SUPT TCH4
 Sci/Tech/Eng/Math Div (STEM)

Monroe, Ross
 FULL TIME FACULTY
 Engineering-STEM Div

Fleming, Marvin
 FULL TIME FACULTY
 Physics-STEMDiv

Mcintosh, Gabrielle
 FULL TIME FACULTY
 Mathematics-STEM Div

Hope, Melissa
 FULL TIME FACULTY
 Mathematics-STEM Div

Mueller, Charles
 FULL TIME FACULTY
 Physics-STEMDiv

Owen, Douglas
 FULL TIME FACULTY
 Mathematics-STEM Div

Obourn, Allison
 FULL TIME FACULTY
 Computer Science-STEM Div

Leoni, Deann
 FULL TIME FACULTY
 Mathematics-STEM Div

Hamp, William
 FULL TIME FACULTY
 Engineering-STEM Div

Mann, R
 INSTR&CLASSROOM SUPT TCH4
 Sci/Tech/Eng/Math Div (STEM)

Culevski, Niko
 FULL TIME FACULTY
 Computer Science-STEM Div

Shlichta, Jennifer
 FULL TIME FACULTY
 Biology-STEM Div

Kelly, Maria
 FULL TIME FACULTY
 Environment AL SCI-STEM Div

Walsh, Heather
 FULL TIME FACULTY
 Chemistry/STEM Div

Whitfield, Mary
 FULL TIME FACULTY
 Chemistry/STEM Div

Averbeck, Patrick
 FULL TIME FACULTY
 Mathematics-STEM Div

Ledford, Tiffany
 FULL TIME FACULTY
 Mathematics-STEM Div

Botley, Paulette
 FULL TIME FACULTY
 Mathematics-STEM Div

Nelson, Susan
 PROGRAM MANAGER A
 Materials Sci-STEM Div

Adams, David
 FULL TIME FACULTY
 Mathematics-STEM Div

Hunt, Timothy
 FULL TIME FACULTY
 Computer Science-STEM Div

Wade Brown, Rachel
 FULL TIME FACULTY
 Physics-STEMDiv

Howie, Tucker
 FULL TIME FACULTY
 Engineering-STEM Div

Eldridge, Jeff
 FULL TIME FACULTY
 Mathematics-STEM Div

Miller, Jonathan
 FULL TIME FACULTY
 Biology-STEM Div

Ingram, Kristi
 PROGRAM COORDINATOR
 Sci/Tech/Eng/Math Div (STEM)

Juetten, Jeremy
 INSTR&CLASSROOM SUPT TCH4
 Sci/Tech/Eng/Math Div (STEM)

Moore, Jesse
 FULL TIME FACULTY
 Engr Technology-STEM Div

Pedrosa Diaz, Pablo
 FULL TIME FACULTY
 AMMET

Yue, Yiren
 FULL TIME FACULTY
 Biology-STEM Div

Muhammad, Uzair
 FULL TIME FACULTY
 Mathematics-STEM Div

Morache, Emily
 ADMINISTRATIVE ASSISTANT 2
 Sci/Tech/Eng/Math Div (STEM)

Ulofoshio, Abigail
 PROGRAM MANAGER A
 Sci/Tech/Eng/Math Div (STEM)

Hagen, Lisa
 ADMIN SERVICES MANAGER C
 Sci/Tech/Eng/Math Div (STEM)



Lagrutta, Kristi
SENIOR DIRECTOR WORKFORCE
Workforce Dev/Training - WDT

Penny, Anne
DIR, BUSINESS OUTREACH
Bus Outreach/Job Develop - CAC

Certain, Gina
DIRECTOR WORKER RETRAINING
Worker Retraining - CAC

Hittle, Trevor
OFFICE ASSISTANT 3
Workforce Dev/Training - WDT



Penny, Anne
DIR, BUSINESS OUTREACH
Bus Outreach/Job Develop - CAC

Zurdo, Veronica
PROGRAM SUPPORT SUPV 1
Bus Outreach/Job Develop - CAC

Sanders, Izzy
Communication Consultant 2
Career, College/Life Success

Evans, Steven
Business Outreach Specialist
Bus Outreach/Job Develop - CAC



Certain, Gina
DIRECTOR WORKER RETRAINING
Worker Retraining - CAC

Pendergraft, Linda
PROGRAM COORDINATOR
Worker Retraining - CAC

Roberts, April
PROGRAM SPECIALIST 2
WorkFirst Programs



Cohen, Allison
 DEAN, PRE-COLLEGE DIVISION
 Pre-College Education Division

Breed, David
 FULL TIME FACULTY
 High School Compl, Pre-Col Div

Roland, Jeremiah
 DIR LEARNING SUPPORT CTR
 Learning Support Center-PreCol

Griesbach, Daniel
 FULL TIME FACULTY
 English Prep/Pre-College Div

Hubbard, Michelle
 FULL TIME FACULTY
 College and Career Prep/PreCol

Schneider, Melody
 FULL TIME FACULTY
 High School Compl, Pre-Col Div

Rios-Gunn, Nicole
 ADVISING MANAGER/IBEST
 Pre-College Education Division

Berry, Chelsey
 PROGRAM SPECIALIST 3
 High School Compl, Pre-Col Div

Castruita, Lola
 PROGRAM SPECIALIST 2
 Pre-College Education Division



Little, Maureen
 ADVISING MGR-INT'L HIGH SC
 Int'l HS Compl-Pre-Col Div

Schubert, Lisa
 FULL TIME FACULTY
 English Prep/Pre-College Div

Holguin, Ashley
 Advising Manager EDCAP
 High School Compl, Pre-Col Div

Pelly, Amanda
 ADMIN SERVICES MANAGER C
 Pre-College Education Division



Phillips, Rachel
 FULL TIME FACULTY
 College and Career Prep/PreCol

Paniagua-Castillo, Genesis
 CASE MANAGER/HS21,GED,AHS
 College and Career Prep/PreCol





Rios-Gunn, Nicole
ADVISING MANAGER/IBEST
Pre-College Education Division

Andrew, Meghan
ADVISING MGR/HS21,GED,AHS
College and Career Prep/PreCol

Yandi, Tatyana
I-BEST CASE MANAGER, ESL
Pre-College Education Division



Little, Maureen
ADVISING MGR-INT'L HIGH SC
Int'l HSCompl-Pre-Col Div

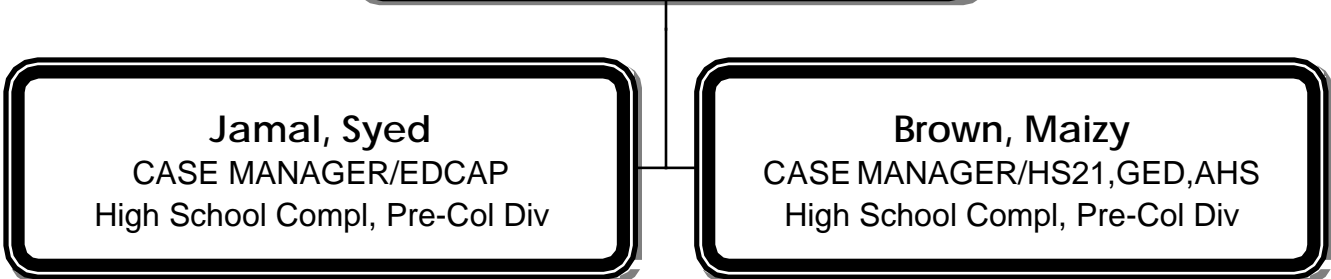
Dinh, Ann
CASE MGR/INT'L HIGH SCHOOL
Int'l HSCompl-Pre-Col Div



Holguin, Ashley
Advising Manager EDCAP
High School Compl, Pre-Col Div

Jamal, Syed
CASE MANAGER/EDCAP
High School Compl, Pre-Col Div

Brown, Maizy
CASE MANAGER/HS21,GED,AHS
High School Compl, Pre-Col Div

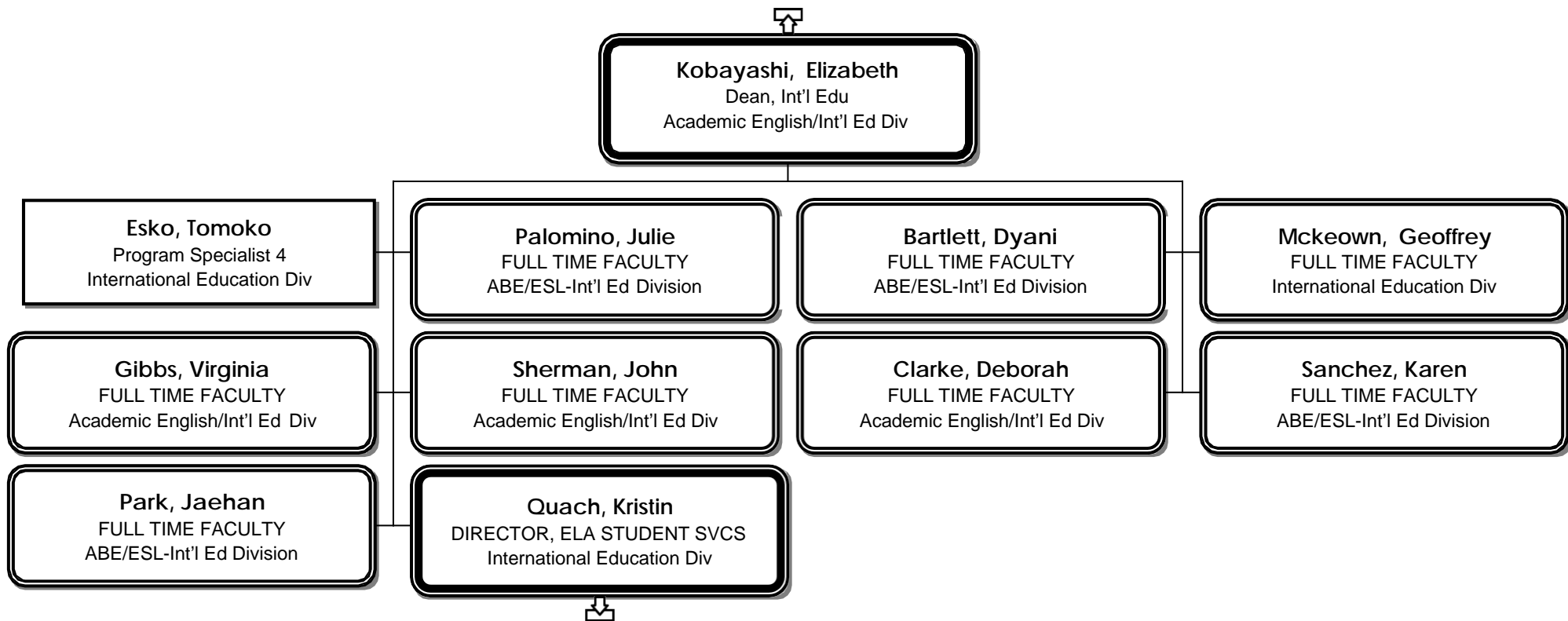




Pelly, Amanda
ADMIN SERVICES MANAGER C
Pre-College Education Division

Cook, Tamara
PROGRAM COORDINATOR
Pre-College Education Division







Quach, Kristin
DIRECTOR, ELA STUDENT SVCS
International Education Div

Hnat, Christi
ELATRANS CASE MANAGER
ABE/ESL-Int'l Ed Division

Obe, Emmanuel
Student Engagement & Retention
ABE/ESL-Int'l Ed Division



Townsend, Karen
 DEAN HEALTH HUMAN SERVICES
 Health/Human Services Div

Linker, Darren
 DIRECTOR OSH PROGRAM
 Occupational Safety & Health

Mc Afee, Mika
 FULL TIME FACULTY
 Social/Human Services-HHS Div

Williams, Ginger
 EXEC DIRECTOR HEAD START
 Head Start

Nieman, Jeannie
 FULL TIME FACULTY
 Physical Education-HHS Div



Mcburnett, Matthew
 PROG MGR - BAS DEGREE PROG
 Child, Youth & Family Studies

Patterson, Elizabeth
 DIR ALLIED HEALTH PRO/PROJ
 Allied Health-HHS Div

Burdick, Timothy
 FULL TIME FACULTY
 Social/Human Services-HHS Div

Arnold-Sturgis, Sandra
 FULL TIME FACULTY
 Early Childhood Ed-HHS Div



Elsa-Gordon, Sophia
 FULL TIME FACULTY
 Child, Youth & Family Studies

Pouley, Theresa
 FULL TIME FACULTY
 Paralegal-HHS Div

Mccoy, Kyra
 DIRECTOR OF NURSING
 Nursing - HHS Div

Coiro, Christina
 FULL TIME FACULTY
 Social/Human Services-HHS Div



Leithauser, Brent
 FULL TIME FACULTY
 Allied Health-HHS Div

Glazewski, Terri
 FULL TIME FACULTY
 Allied Health-HHS Div

Mccarty, Karen
 PROGRAM SPECIALIST 2
 Allied Health-HHS Div

Smith, Cherry
 PROGRAM ASSISTANT
 Health/Human Services Div

Bemis, Danielle
 FULL TIME FACULTY
 Integrated Healthcare Manageme

Haddock, Scott
 FULL TIME FACULTY
 Paralegal-HHS Div

Chen, Edward
 FULL TIME FACULTY
 Paralegal-HHS Div

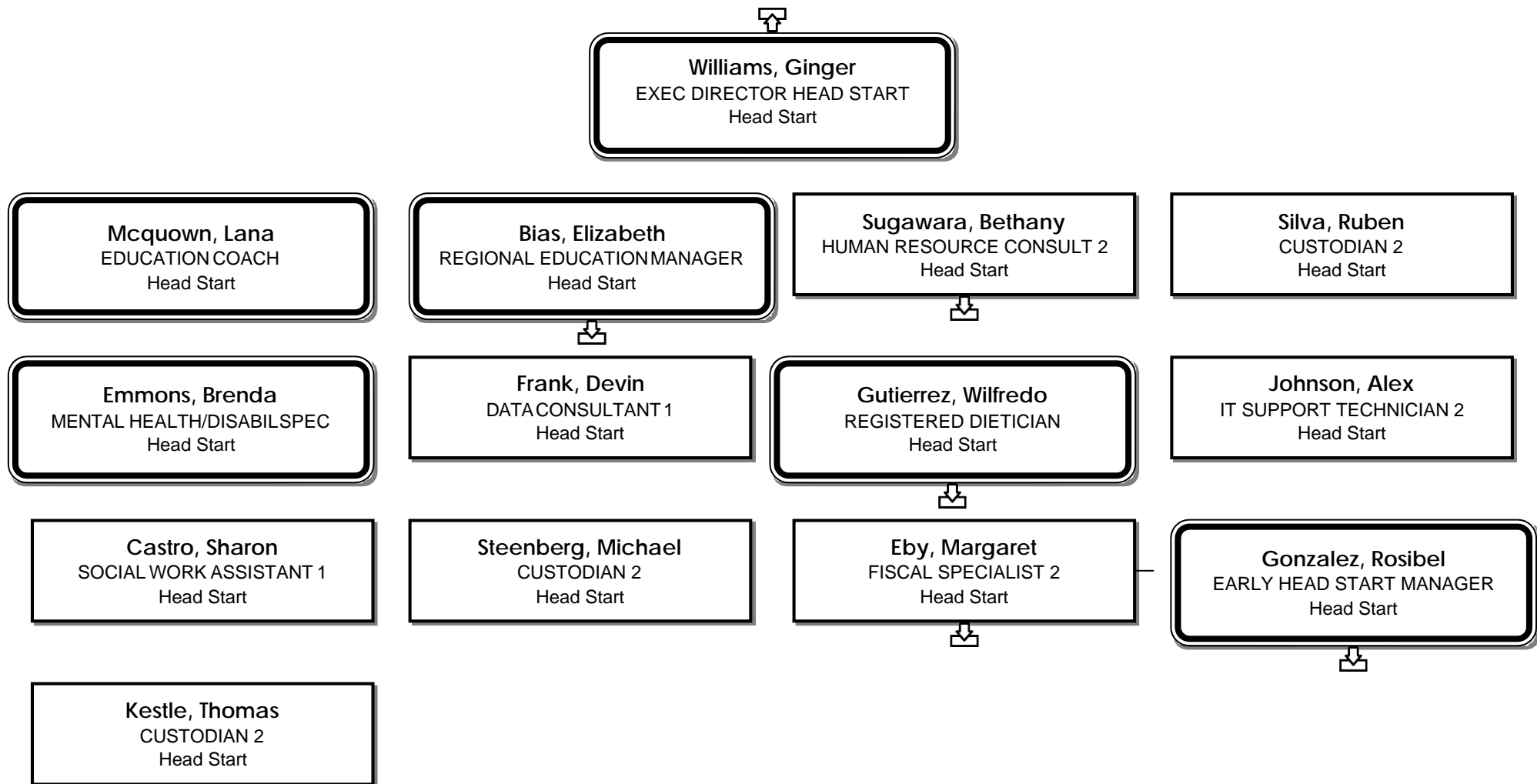
Nilsen, Danielle
 ADMINISTRATIVE ASSISTANT 3
 Health/Human Services Div

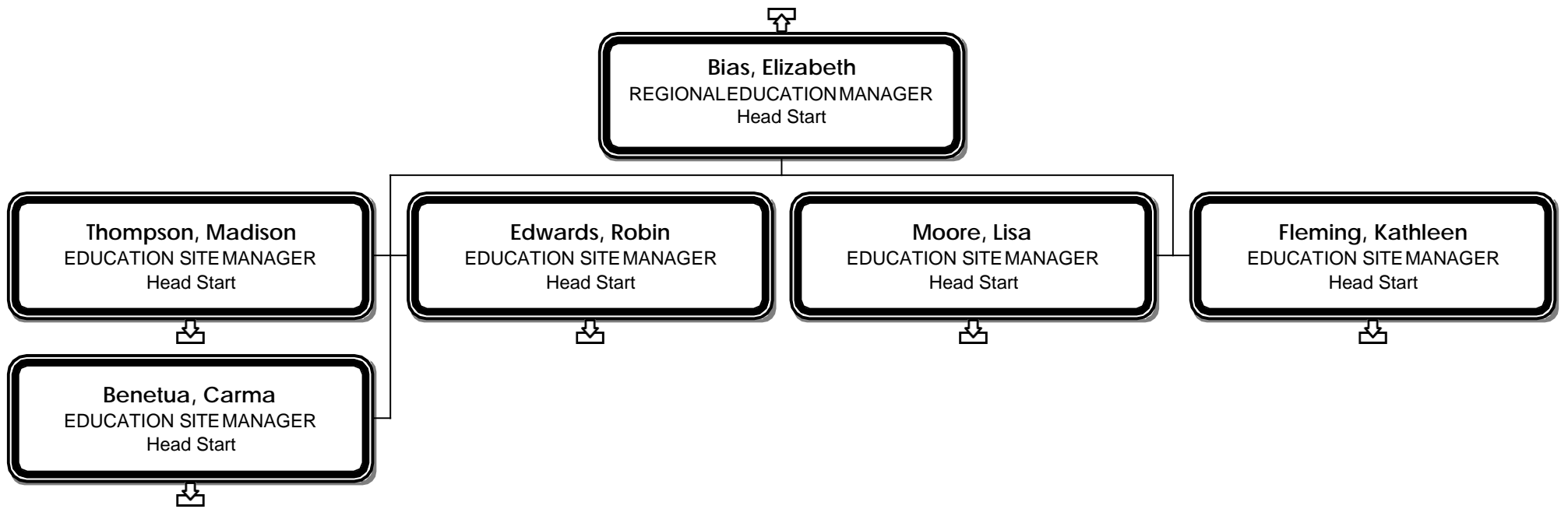
Osthimer, Shannon
 FISCAL ANALYST 2
 Family Life Education-HHS Div

Fisher, Gwendolyn
 PROGRAM SPECIALIST 2
 Health/Human Services Div

Green, Roxanne
 FULL TIME FACULTY
 Social/Human Services-HHS Div

Swanger, Amber
 ADMIN SERVICES MANAGER C
 Health/Human Services Div







Thompson, Madison
EDUCATION SITE MANAGER
Head Start

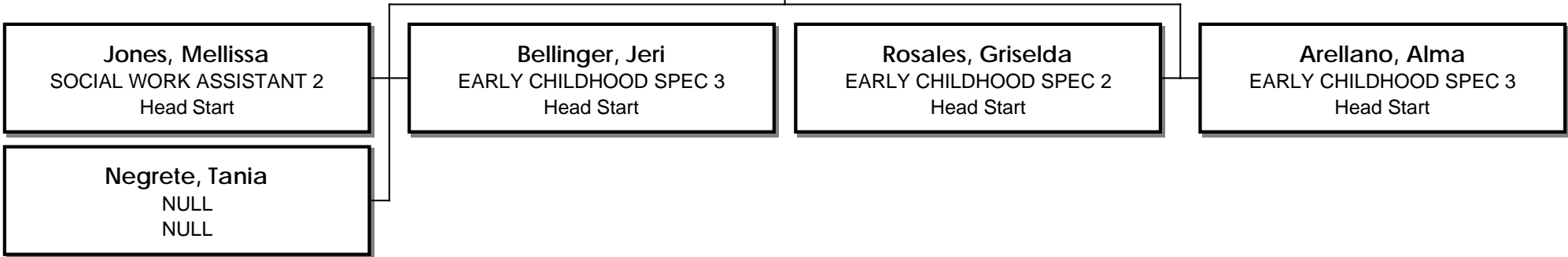
Jones, Mellissa
SOCIAL WORK ASSISTANT 2
Head Start

Negrete, Tania
NULL
NULL

Bellinger, Jeri
EARLY CHILDHOOD SPEC 3
Head Start

Rosales, Griselda
EARLY CHILDHOOD SPEC 2
Head Start

Arellano, Alma
EARLY CHILDHOOD SPEC 3
Head Start





Edwards, Robin
EDUCATION SITE MANAGER
Head Start

Martinez Hurtado, Karla
EARLY CHILDHOOD SPEC 2
Head Start

Kamradt, Rebecca
EARLY CHILDHOOD SPEC 2
Head Start

Tellez-Roque, Veronica
NULL
NULL

Vicencio, Anahi
EARLY CHILDHOOD SPEC 2
Head Start

Ortiz, Carla
EARLY CHILDHOOD SPEC 3
Head Start

Reimnitz, Ana
EARLY CHILDHOOD SPEC 3
Head Start

Afroj, Sayma
EARLY CHILDHOOD SPEC 1
Head Start

Sykes, Michelle
EARLY CHILDHOOD SPEC 3
Head Start

Kaneda, Takako
NULL
NULL

Loeza, Jamie
EARLY CHILDHOOD SPEC 1
Head Start

Medina, Monica
SOCIAL WORK ASSISTANT 2
Head Start

Rudolph, Jennifer
EARLY CHILDHOOD SPEC 3
Head Start

Kidane, Weini
EARLY CHILDHOOD SPEC 1
Head Start



Moore, Lisa
EDUCATION SITE MANAGER
Head Start

Hansen, Andrea
EARLY CHILDHOOD SPEC 3
Head Start

Molina, Jamileth
EARLY CHILDHOOD SPEC 1
Head Start

Zatarain, Monica
EARLY CHILDHOOD SPEC 3
Head Start

Newby, Cathy
EARLY CHILDHOOD SPEC 2
Head Start

Kretschmer, Brandy
EARLY CHILDHOOD SPEC 3
Head Start

Weiss Cook, Barbara
SOCIAL WORK ASSISTANT 2
Head Start



Fleming, Kathleen
EDUCATION SITE MANAGER
Head Start

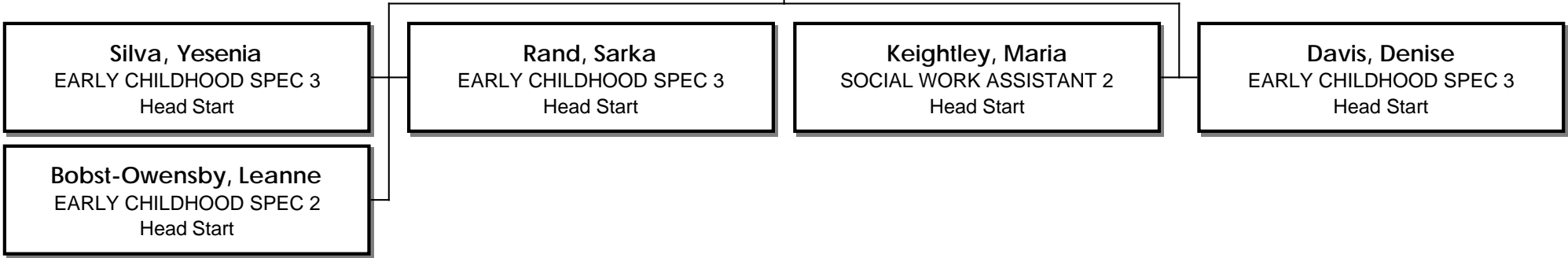
Silva, Yesenia
EARLY CHILDHOOD SPEC 3
Head Start

Bobst-Owensby, Leanne
EARLY CHILDHOOD SPEC 2
Head Start

Rand, Sarka
EARLY CHILDHOOD SPEC 3
Head Start

Keightley, Maria
SOCIAL WORK ASSISTANT 2
Head Start

Davis, Denise
EARLY CHILDHOOD SPEC 3
Head Start





Benetua, Carma
EDUCATION SITE MANAGER
Head Start

Watson, Debra
EARLY CHILDHOOD SPEC 3
Head Start

Calle, Maclovia
EARLY CHILDHOOD SPEC 2
Head Start

Westergreen, Johnnie
NULL
NULL

Ng, Ann Lorraine
EARLY CHILDHOOD SPEC 3
Head Start

Kaile, Deepika
EARLY CHILDHOOD SPEC 2
Head Start

Palomino, Maria
EARLY CHILDHOOD SPEC 3
Head Start

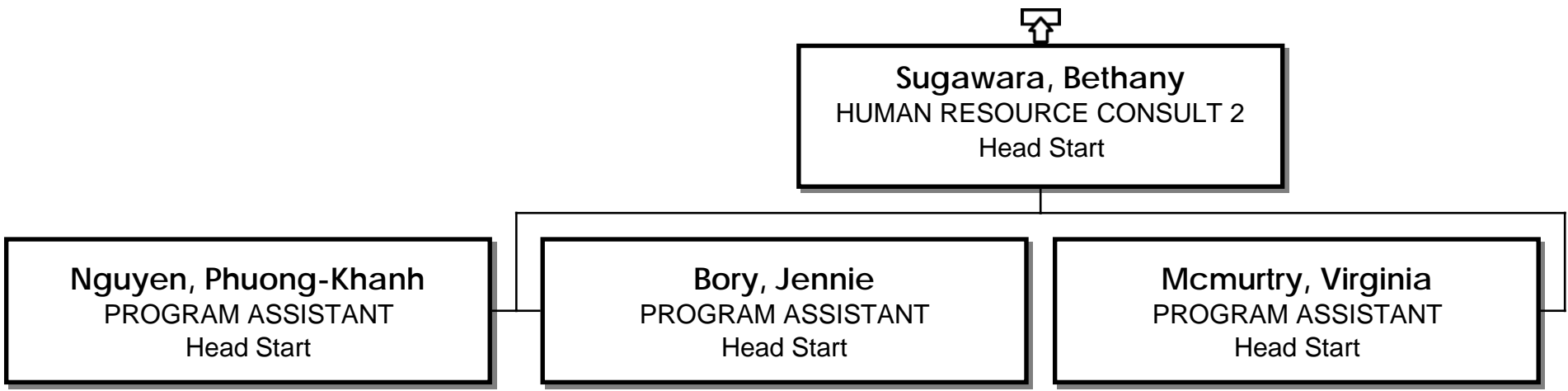


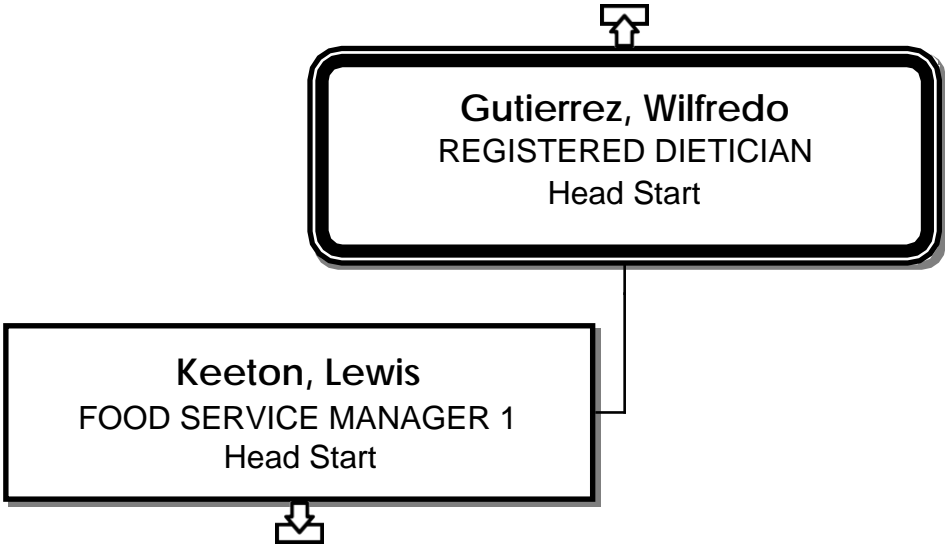
Sugawara, Bethany
HUMAN RESOURCE CONSULT 2
Head Start

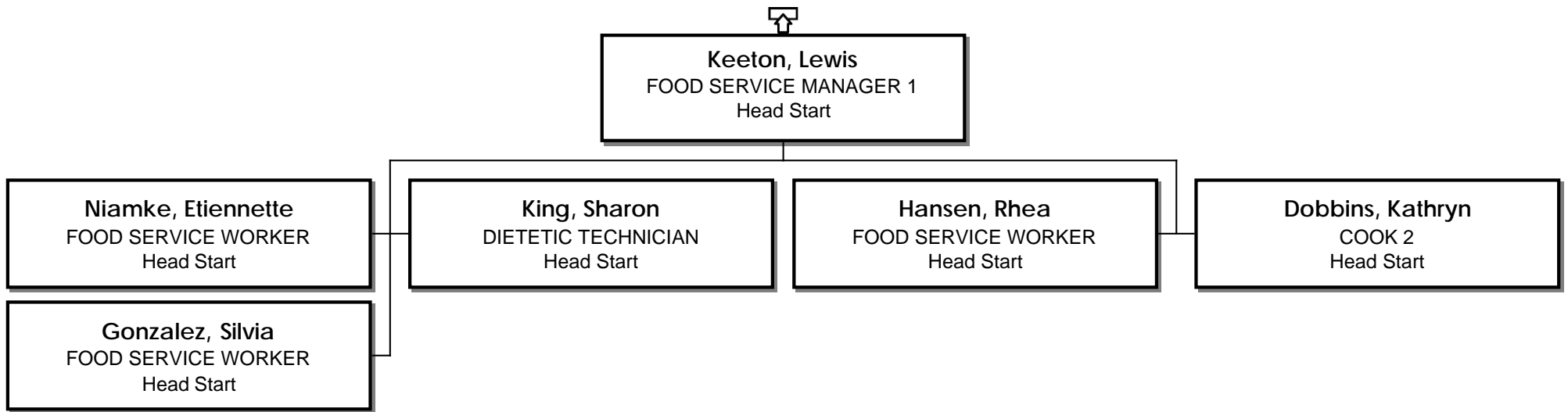
Nguyen, Phuong-Khanh
PROGRAM ASSISTANT
Head Start

Bory, Jennie
PROGRAM ASSISTANT
Head Start

Mcmurtry, Virginia
PROGRAM ASSISTANT
Head Start









Eby, Margaret
FISCAL SPECIALIST 2
Head Start



Gonzalez, Rosibel
EARLY HEAD START MANAGER
Head Start

Davis, Laurie
EARLY CHILDHOOD SPEC 3
Head Start

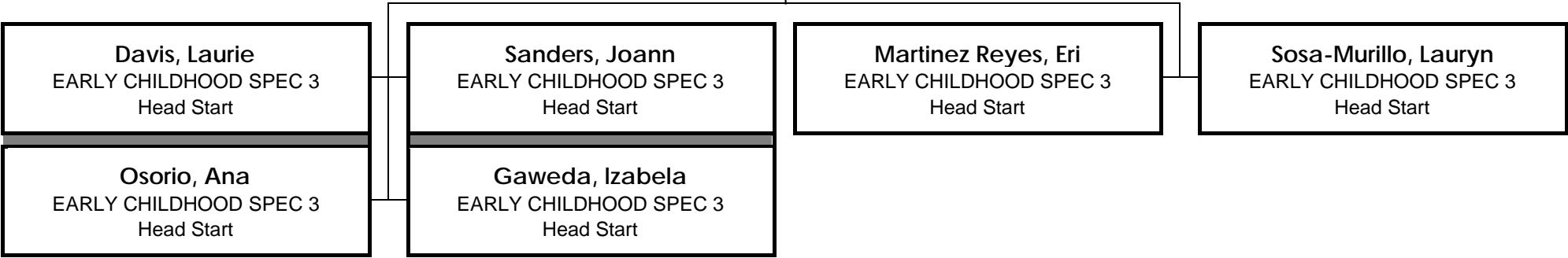
Osorio, Ana
EARLY CHILDHOOD SPEC 3
Head Start

Sanders, Joann
EARLY CHILDHOOD SPEC 3
Head Start

Gaweda, Izabela
EARLY CHILDHOOD SPEC 3
Head Start

Martinez Reyes, Eri
EARLY CHILDHOOD SPEC 3
Head Start

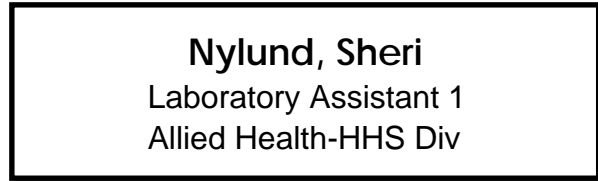
Sosa-Murillo, Lauryn
EARLY CHILDHOOD SPEC 3
Head Start





Patterson, Elizabeth
DIR ALLIED HEALTH PRO/PROJ
Allied Health-HHS Div

Nylund, Sheri
Laboratory Assistant 1
Allied Health-HHS Div





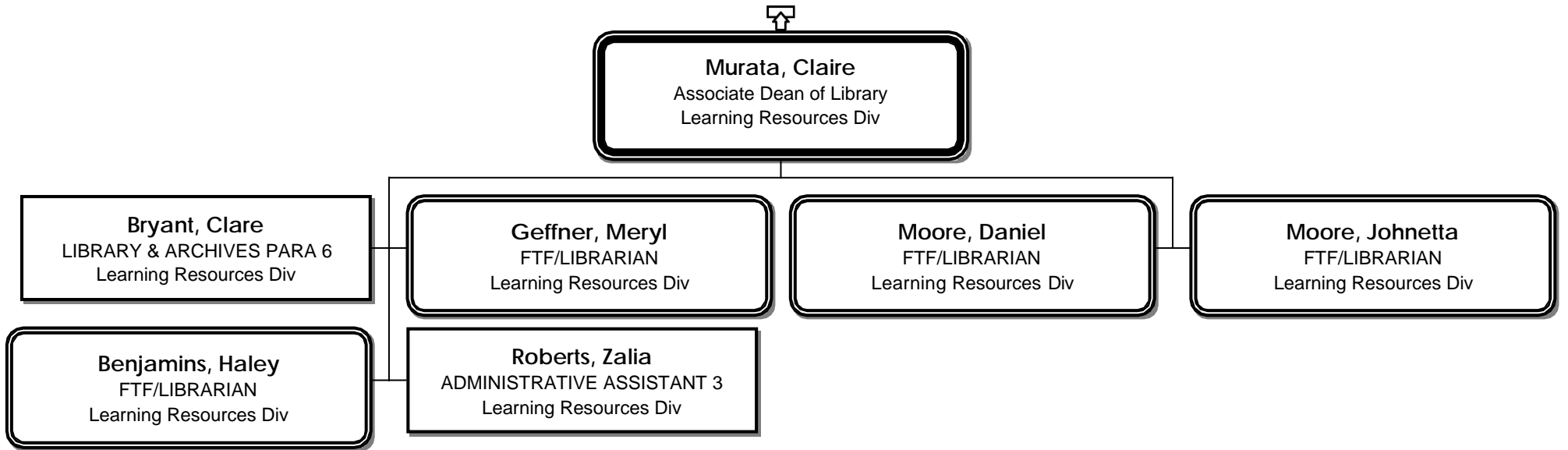
Mccoy, Kyra
DIRECTOR OF NURSING
Nursing - HHS Div

Robinweiler, Catharine
FULL TIME FACULTY
Nursing - HHS Div

Smith, Taylor
FULL TIME FACULTY
Nursing - HHS Div

Casperson, Jennifer
FULL TIME FACULTY
Nursing - HHS Div

Schmekel, Alyssia
INSTR&CLASSROOM SUPT TCH3
Allied Health-HHS Div





Hawkins, Vernon
 DEAN BUSINESS DIVISION
 Business Div

Halverson, Vanessa
 ADMIN SERVICES MANAGER C
 Business Div

Meehan, Kari
 FULL TIME FACULTY
 Business Info Tech-Bus Div

Einfeld, Mark
 FULL TIME FACULTY
 Computer Info Systems-STEM Div

Hailey, Steven
 FULL TIME FACULTY
 Computer Info Systems-STEM Div

Pyzo, Ulyana
 PROGRAM MANAGER A
 Creative Retirement - Comm Edu

Edlin, Traci
 FULL TIME FACULTY
 Culinary Arts-Bus Div

Jacobson, David
 FULL TIME FACULTY
 Construction Mgmt-Bus Div

Andrew, Michael
 FULL TIME FACULTY
 Computer Info Systems-STEM Div

Mitchell, Daniel
 INSTR&CLASSROOM SUPT TCH3
 Culinary Arts-Bus Div

Toccoli, Linda
 INSTR&CLASSROOM SUPT TCH3
 Horticulture-Bus Div

Ju, Yonghui
 FULL TIME FACULTY
 Accounting-Bus Div

Levi, Claudia
 FULL TIME FACULTY
 Bus Management-Bus Div

Haines, Kimberly
 FULL TIME FACULTY
 Business Info Tech-Bus Div

Fogarty, Kevin
 FULL TIME FACULTY
 Culinary Arts-Bus Div

Tran, Thutrang
 FULL TIME FACULTY
 Bus Management-Bus Div

Kotlove, Barry
 FULL TIME FACULTY
 Economics-Hum/Soc Sci Div

Schwartz, Stacey
 FULL TIME FACULTY
 Culinary Arts-Bus Div

George, Diana
 Director of Pre-ETS
 Student Transition/Retention

Brooks, Lorraine
 FULL TIME FACULTY
 Horticulture-Bus Div

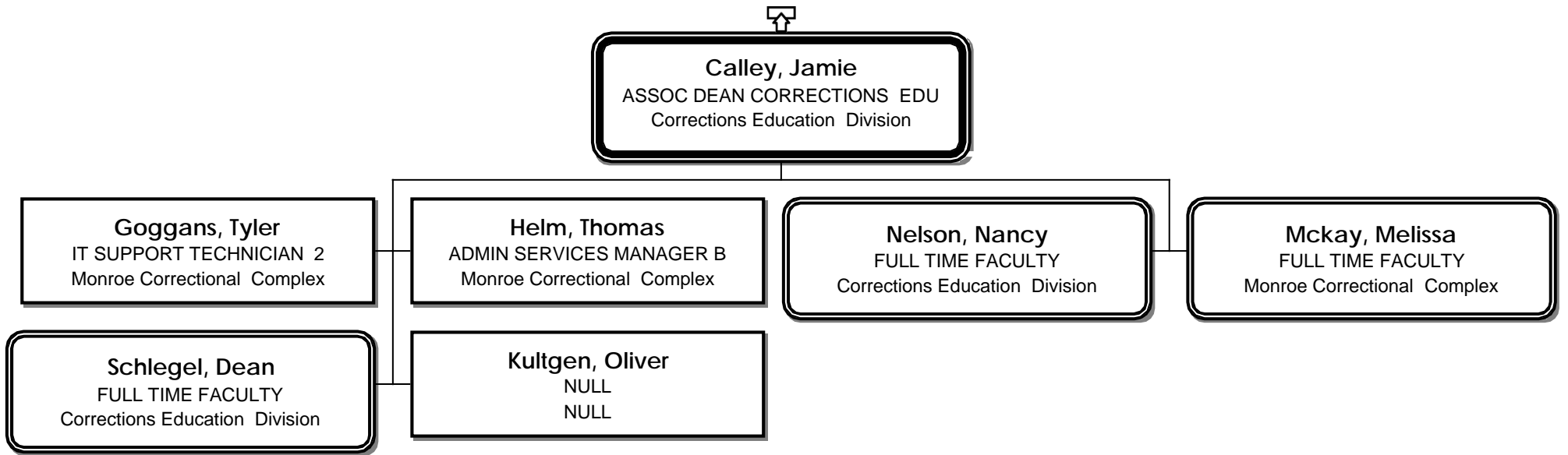
Bevans, Stephanie
 FULL TIME FACULTY
 Business Info Tech-Bus Div

O'Donnell, Elizabeth
 FULL TIME FACULTY
 Hospitality/Tourism-Bus Div

Kolanda, Patrick
 FULL TIME FACULTY
 Construction Mgmt-Bus Div

Escobar Barboza, Ariadna
 PROG MGR - BAS ITAD
 Business Div

Kadwell, Frank
 FULL TIME FACULTY
 IT Application Dev (ITAD)





Mueth, Elizabeth
Dir of Curriculum & Scheduling
EVP for Instruction Office



Williams, Andrew
 INTERIM DEAN HUMANITIES/SS
 Office of the President

Van Belle, James
 FULL TIME FACULTY
 English-Hum/Soc Sci Div

Inslee, Jennifer
 FULL TIME FACULTY
 English-Hum/Soc Sci Div

Ray, Erik
 FULL TIME FACULTY
 History Hum/So Sci Div

Baumgartner, John
 FULL TIME FACULTY
 English-Hum/Soc Sci Div

Asaf, Audineh
 FULL TIME FACULTY
 Art-Hum/Soc Sic Div

Marcy, Kirk
 FULL TIME FACULTY
 Music Hum/Soc Sci Div

Yahiaoui, Hanifa
 FULL TIME FACULTY
 Modern Language-HSS Div

Sanders, John
 FULL TIME FACULTY
 Music Hum/Soc Sci Div

Sibicky, Nicholas
 FULL TIME FACULTY
 Music Hum/Soc Sci Div

Simonton, Kathleen
 FULL TIME FACULTY
 History Hum/So Sci Div

Datta, Robin
 FULL TIME FACULTY
 Political Science-HSS Div

Lucca, Oswaldo
 FULL TIME FACULTY
 Modern Language-HSS Div



Kumar, Pranab
 FULL TIME FACULTY
 English-Hum/Soc Sci Div

Weitz, Frederick
 FULL TIME FACULTY
 Psychology-Hum/So Sci Div

Harrill, James
 FULL TIME FACULTY
 English-Hum/Soc Sci Div

Harris-Barnett, Ruth
 FULL TIME FACULTY
 English-Hum/Soc Sci Div

Meslans, Susanne
 FULL TIME FACULTY
 English-Hum/Soc Sci Div

Seely, Mark
 FULL TIME FACULTY
 Psychology-Hum/So Sci Div

Murphy, Kathleen
 FULL TIME FACULTY
 English-Hum/Soc Sci Div

Andrews, Lia
 Program Specialist 4
 Humanities/Social Sciences Div

Carrico, Minh
 FULL TIME FACULTY
 Visual Communications-HSS

Rossman, Leslie
 FULL TIME FACULTY
 Communication Studies-HSS Div

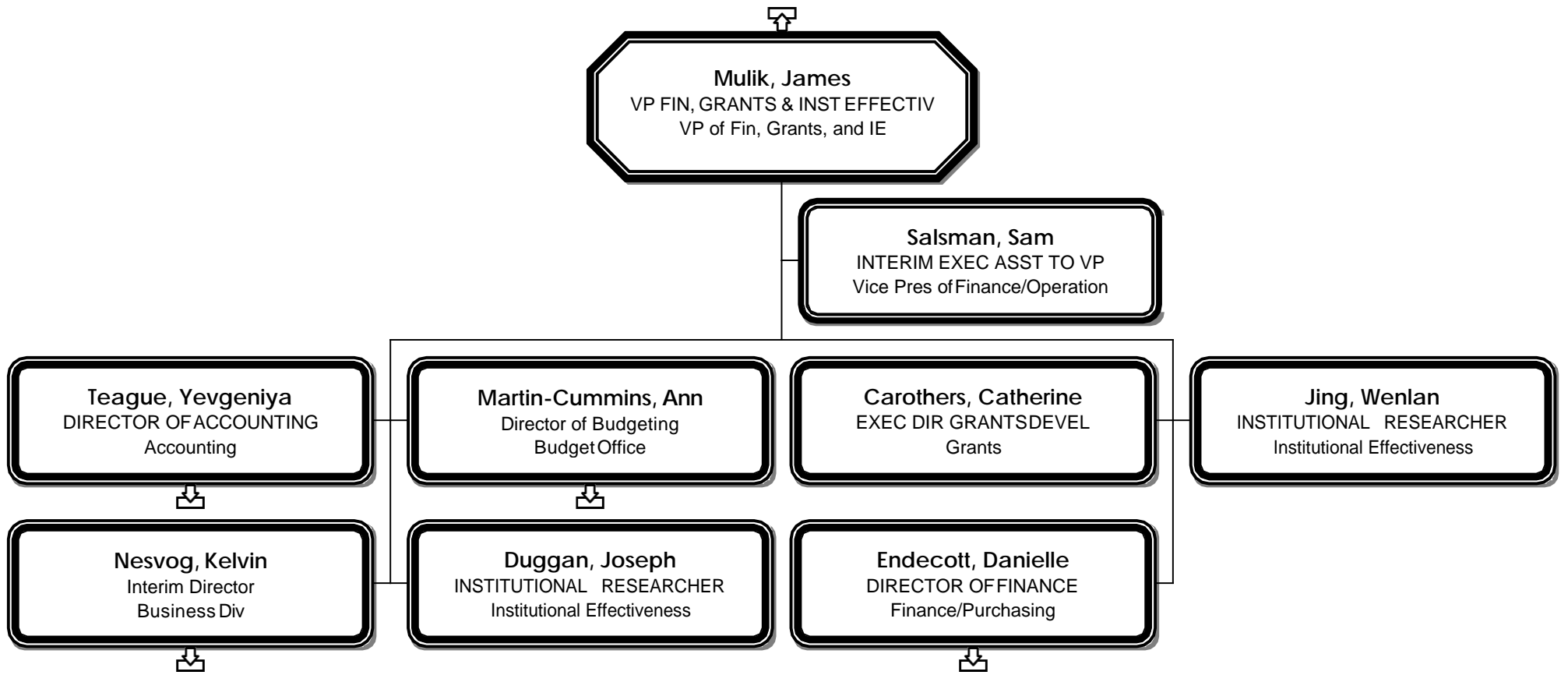
Kuklok, Allison
 FULL TIME FACULTY
 Philosophy-Hum/Soc Sci Div

Lin, Hsinmei
 FULL TIME FACULTY
 English-Hum/Soc Sci Div

Al-ghfafi, Rowan
 ADMINISTRATIVE ASSISTANT 3
 Humanities/Social Sciences Div



Datta, Robin
FULL TIME FACULTY
Political Science-HSS Div





Teague, Yevgeniya
DIRECTOR OF ACCOUNTING
Accounting

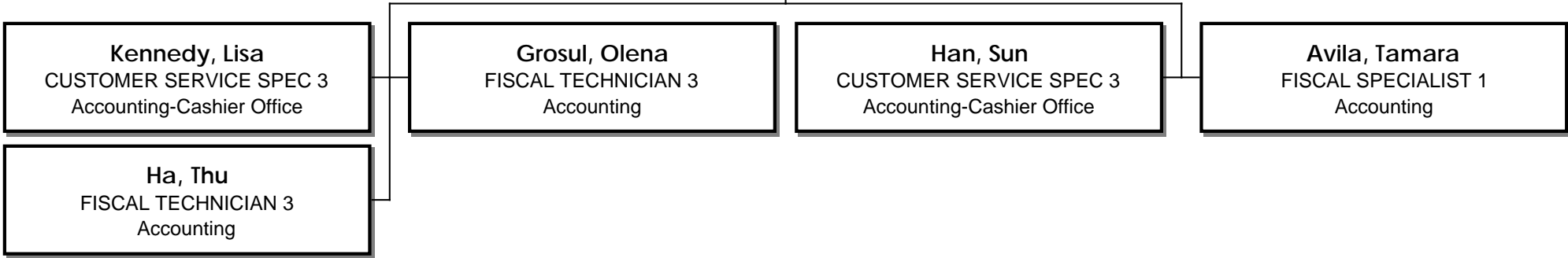
Kennedy, Lisa
CUSTOMER SERVICE SPEC 3
Accounting-Cashier Office

Grosul, Olena
FISCAL TECHNICIAN 3
Accounting

Han, Sun
CUSTOMER SERVICE SPEC 3
Accounting-Cashier Office

Avila, Tamara
FISCAL SPECIALIST 1
Accounting

Ha, Thu
FISCAL TECHNICIAN 3
Accounting





Martin-Cummins, Ann
Director of Budgeting
Budget Office

Miron Leyva, Nancy
BUDGET ANALYST 2
Budget Office

Nelson, Kirsten
BUDGET ANALYST 2
Budget Office



Nesvog, Kelvin
Interim Director
Business Div

Tupou, Dianna
PROCURE & SUPPLY SPEC 2
Purchasing

Ekonomakis, Marina
PROCURE & SUPPLY SPEC 2
Purchasing

Vogt, Angela
OFFICE ASSISTANT 3
Print and Mail Center

Ellis, James
WAREHOUSE OPERATOR 2-G
Purchasing

Packer, Alicia
Mail Processing Manager
Print and Mail Center

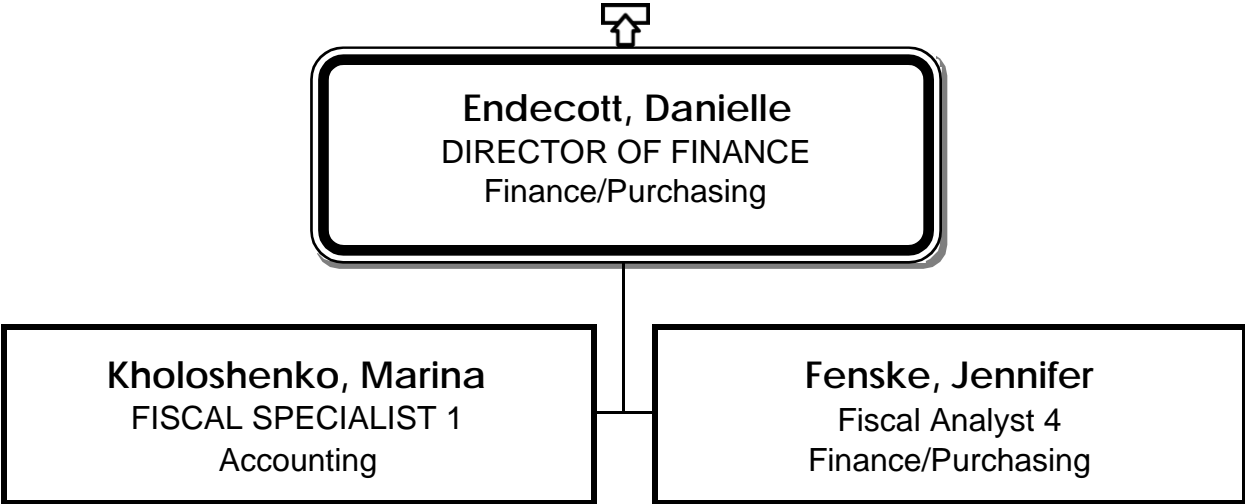




Endecott, Danielle
DIRECTOR OF FINANCE
Finance/Purchasing

Kholoshenko, Marina
FISCAL SPECIALIST 1
Accounting

Fenske, Jennifer
Fiscal Analyst 4
Finance/Purchasing





Jeter-Hill, Jade
DIR,SAFETY/SECUR&EMER PREP
Campus Safety/Security

Soderback, Eric
CAMPUS SECURITY OFFICER
Campus Safety/Security

Fong, Tevita
CAMPUS SECURITY OFFICER
Campus Safety/Security

Munoz-Palomo, Clarissa
PROGRAM SPECIALIST 2 SSEP
Campus Safety/Security

Moratalla, Fernando
ASST DIR-SECURITY OPS
Campus Safety/Security

Cornell, Jennifer
OFFICE ASSISTANT 3
Campus Safety/Security

Bassir, Jalaluddin
CAMPUS SECURITY OFFICER
Campus Safety/Security

GOFORTH, BRIAN
CAMPUS SECURITY OFFICER
Campus Safety/Security

Nilson, Kyle
CAMPUS SECURITY OFFICER
Campus Safety/Security

Endreson, Allison
CAMPUS SECURITY OFFICER
Campus Safety/Security

Curran, Peter
CAMPUS SECURITY OFFICER
Campus Safety/Security

Patton, Shaun
CAMPUS SECURITY OFFICER
Campus Safety/Security

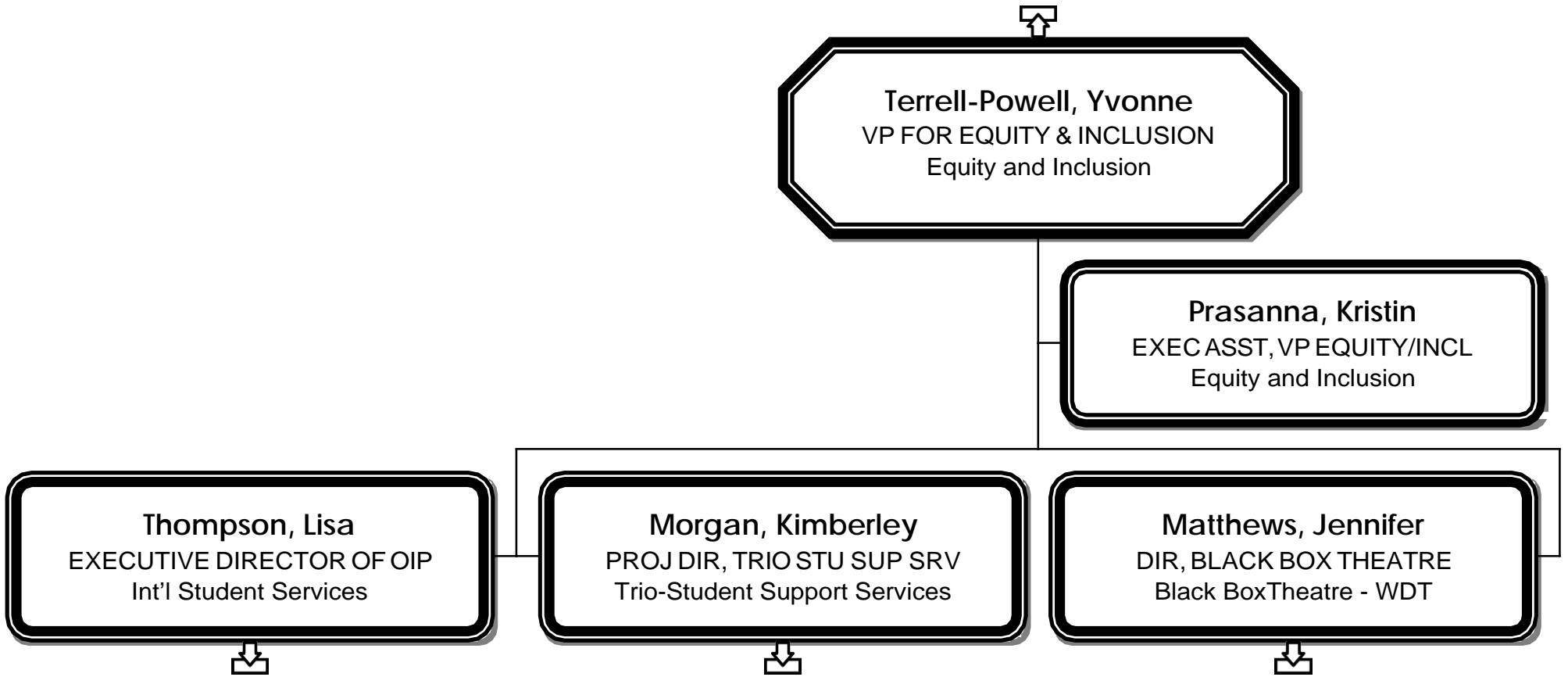
Morales, Luis Manuel
CAMPUS SECURITY OFFICER
Campus Safety/Security

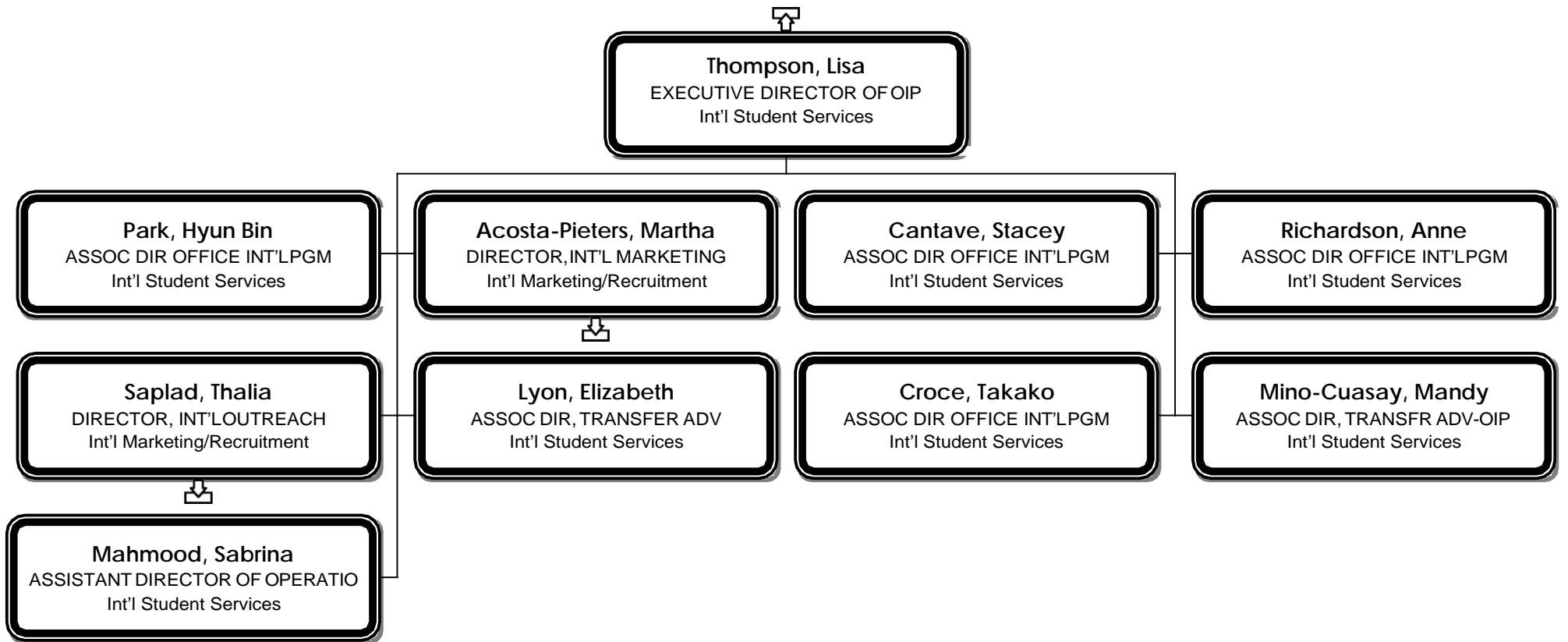
Crawford, Bret
EMER PREP MGR/CLERY COMPL
Campus Safety/Security

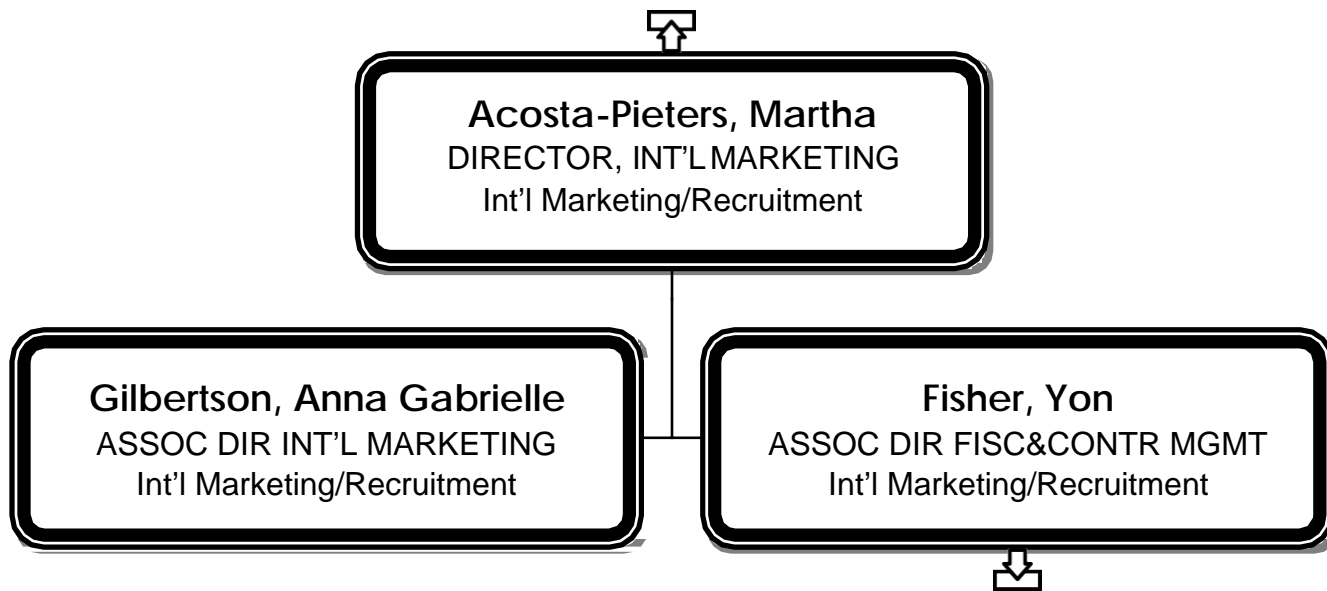
O'Toole, Todd
CAMPUS SECURITY OFFICER
Campus Safety/Security

Rauzi, Stephen
CAMPUS SECURITY OFFICER
Campus Safety/Security

Irving, Michael
CAMPUS SECURITY OFFICER
Campus Safety/Security









Fisher, Yon
ASSOC DIR FISC&CONTR MGMT
Int'l Marketing/Recruitment

Suh, Yeon Jin
Fiscal Analyst 1
Int'l Marketing/Recruitment

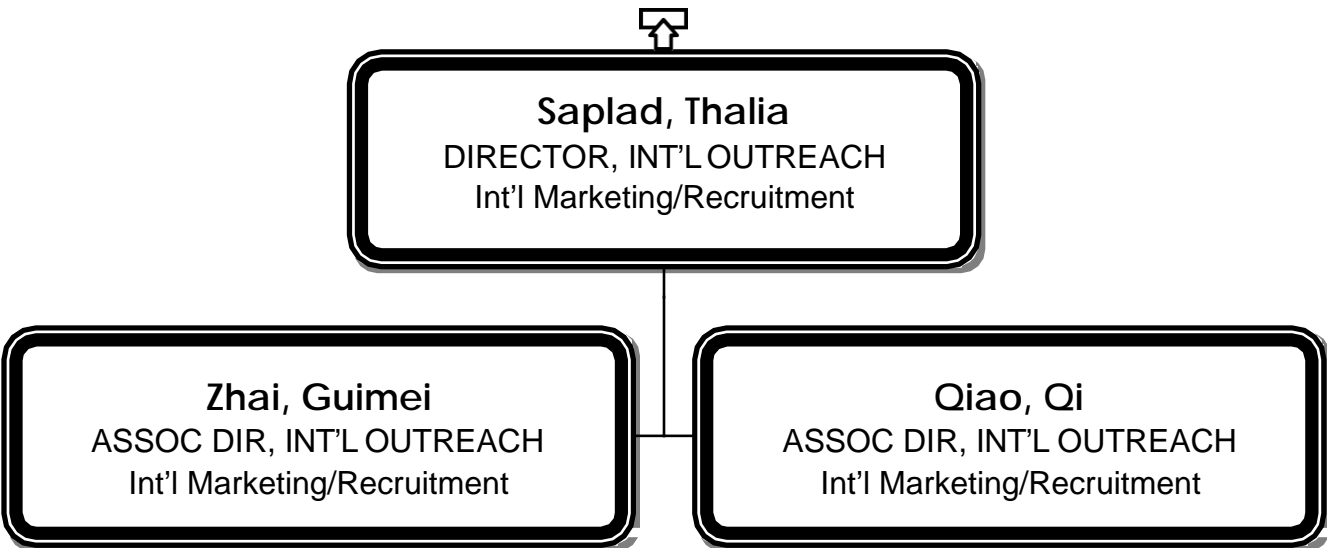




Saplad, Thalia
DIRECTOR, INT'L OUTREACH
Int'l Marketing/Recruitment

Zhai, Guimei
ASSOC DIR, INT'L OUTREACH
Int'l Marketing/Recruitment

Qiao, Qi
ASSOC DIR, INT'L OUTREACH
Int'l Marketing/Recruitment





Morgan, Kimberley
PROJ DIR, TRIO STU SUP SRV
Trio-Student Support Services

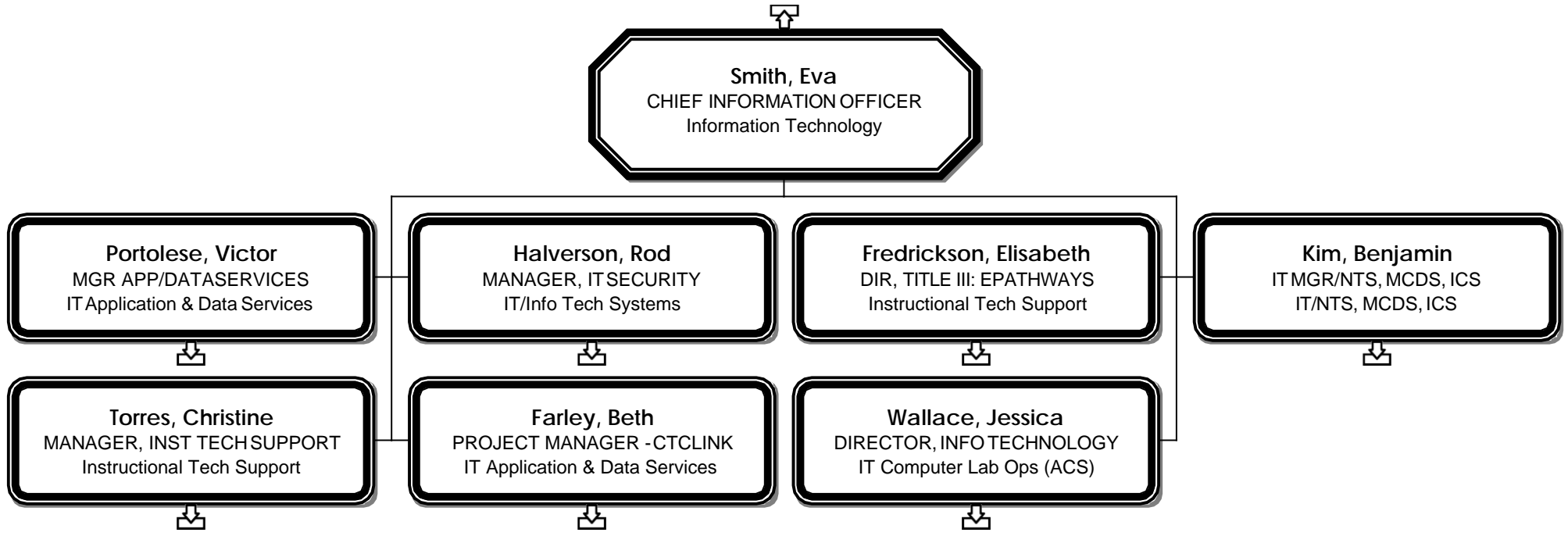
Brennan, Shawn
STUDENT SUCCESS COACH/TRIO
Trio-Student Support Services

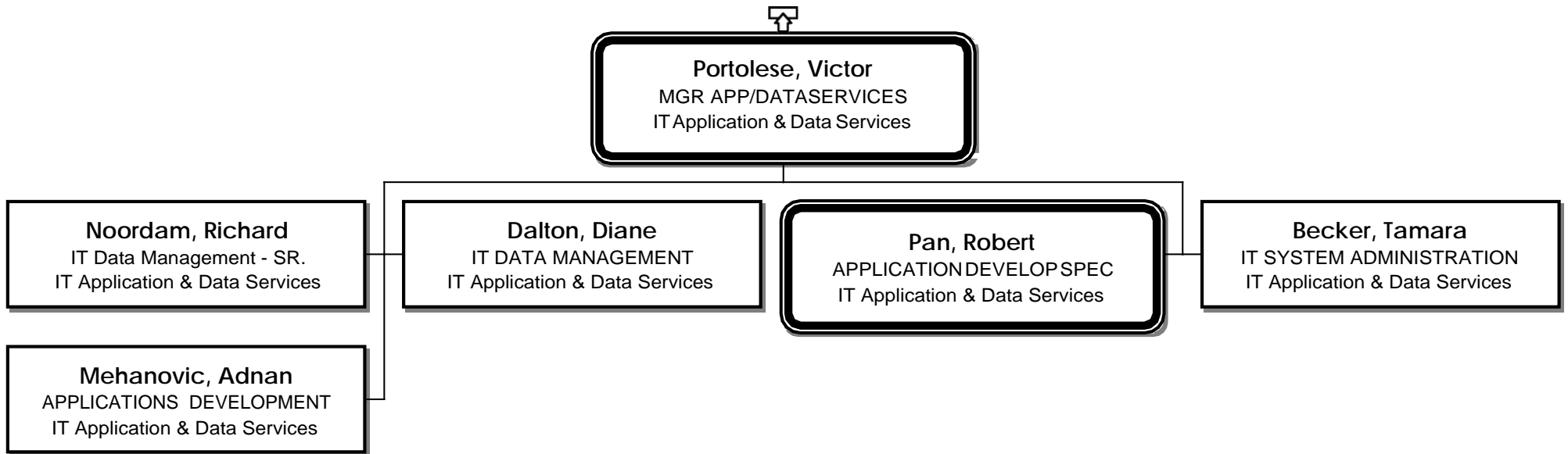
Thurman, Tiarae
STUDENT SUCCESS COACH/TRIO
Trio-Student Support Services

Kakar, Zorbakhtah
NULL
NULL



Matthews, Jennifer
DIR, BLACK BOX THEATRE
Black BoxTheatre - WDT



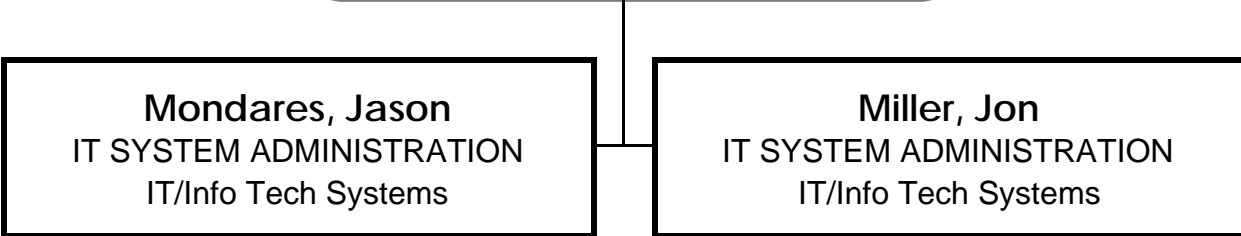




Halverson, Rod
MANAGER, IT SECURITY
IT/Info Tech Systems

Mondares, Jason
IT SYSTEM ADMINISTRATION
IT/Info Tech Systems

Miller, Jon
IT SYSTEM ADMINISTRATION
IT/Info Tech Systems





Fredrickson, Elisabeth
DIR, TITLE III: EPATHWAYS
Instructional Tech Support

Kuhlmann, Deborah
Instructional Designer
Instructional Tech Support

Villanueva, Bryce
Instructional Technologist
Instructional Tech Support



Kim, Benjamin
IT MGR/NTS, MCDS, ICS
IT/NTS, MCDS, ICS

Winney, David
IT SYSTEM ADMINISTRATION
IT Computer Lab Ops (ACS)

Voogd, David
IT SYSTEM ADMINISTRATION
IT/Info Tech Systems

Siemer, Ryan
NETWORK & TELECOM
IT/NTS

Rynearson, David
IT SYSTEM ADMINISTRATION
IT/Info Tech Systems

Raio, Mathew
NETWORK & TELECOM
IT/Telecom/Networking

Weitz Jr, Frederick
NETWORK & TELECOM
IT/NTS

Latshaw, Stephen
IT SUPPORT TECHNICIAN 1
IT/MCDS

Thalib, Mohammad
IT SYSTEM ADMINISTRATION
IT Computer Lab Ops (ACS)



Torres, Christine
MANAGER, INST TECH SUPPORT
Instructional Tech Support

Pham, Tuan
IT CUSTOMER SUPPORT
IT/Info Tech Systems

Nguyen, Toan
IT SUPPORT TECHNICIAN 2
Instructional Tech Support

Isaacson, Ryan
IT SUPPORT TECHNICIAN 2
Instructional Tech Support

Fredrickson, John
IT CUSTOMER SUPPORT
IT/Info Tech Systems

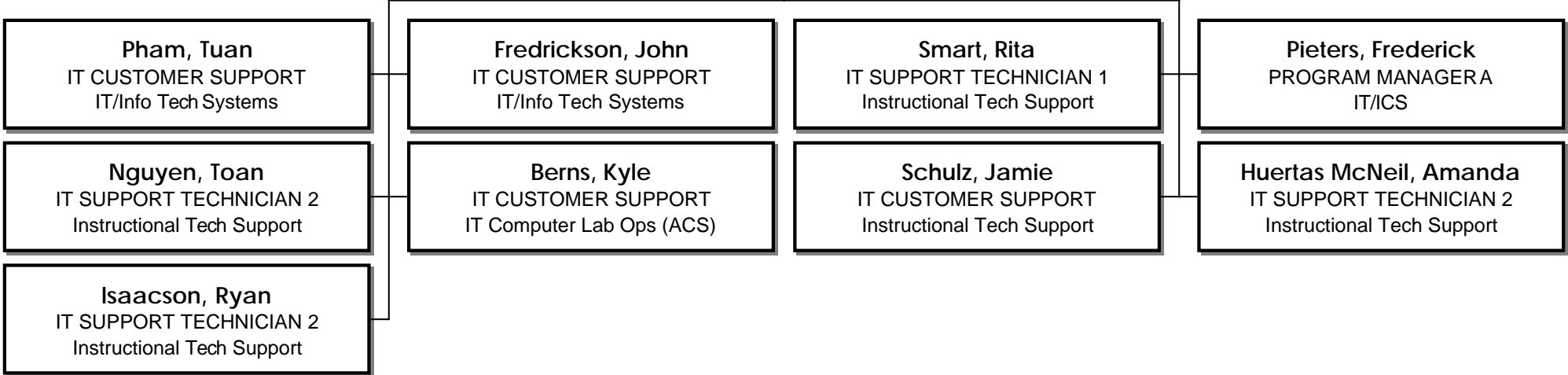
Berns, Kyle
IT CUSTOMER SUPPORT
IT Computer Lab Ops (ACS)

Smart, Rita
IT SUPPORT TECHNICIAN 1
Instructional Tech Support

Schulz, Jamie
IT CUSTOMER SUPPORT
Instructional Tech Support

Pieters, Frederick
PROGRAM MANAGER A
IT/ICS

Huertas McNeil, Amanda
IT SUPPORT TECHNICIAN 2
Instructional Tech Support





Farley, Beth
PROJECT MANAGER - CTCLINK
IT Application & Data Services

Foerster, Jack
BUSINESS SYSTEMS ANALYST
IT Application & Data Services





Wallace, Jessica
DIRECTOR, INFO TECHNOLOGY
IT Computer Lab Ops (ACS)

Leggett, Leah
BUS SYS AN/CTCLINK OCMLD
Information Technology

↑
Hart, Christina
VP ENROLL. & STU SERV
Vice Pres Stu Services Office

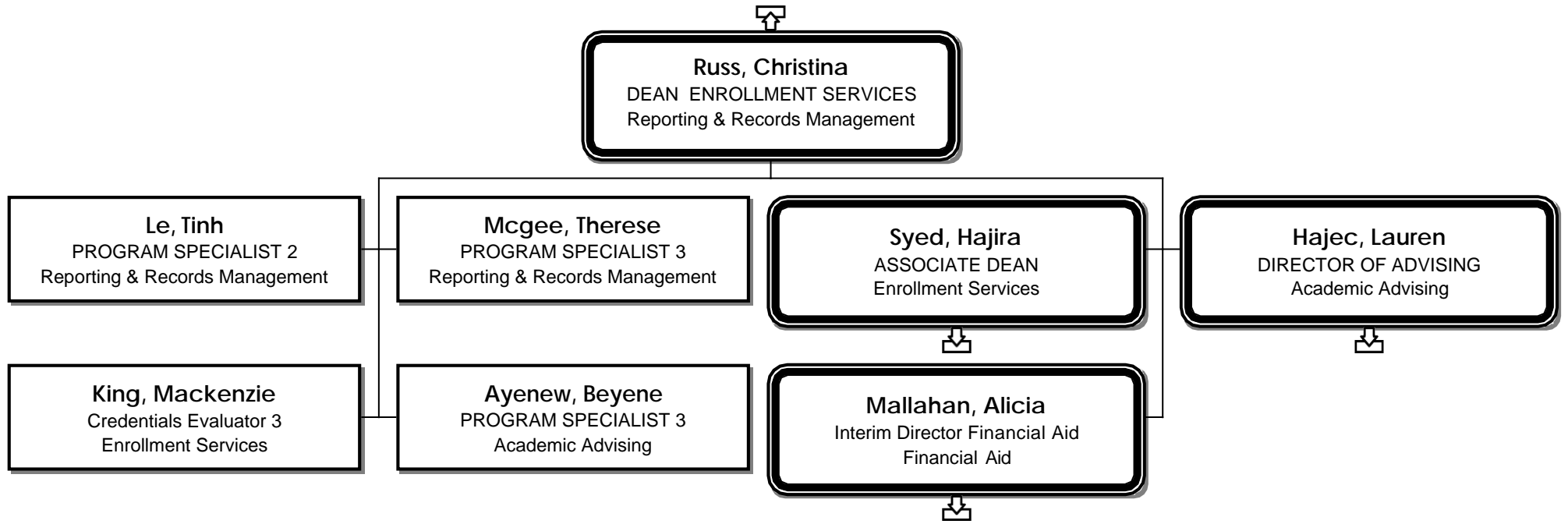
Ruedas Gamboa, Raquel
EXEC ASST VP STU SERVICES
Vice Pres Stu Services Office

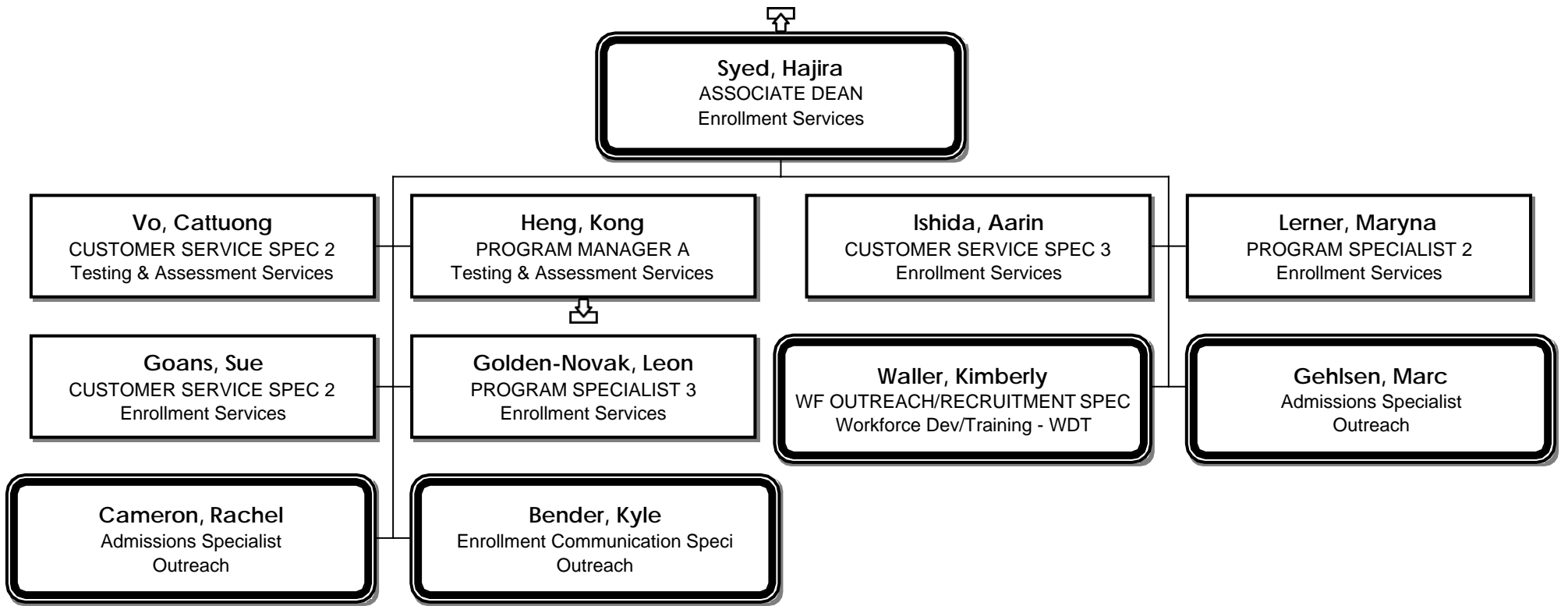
Cain, Cherry
CUSTOMER SERVICE SPEC 3
Running Start/HS Outreach

Russ, Christina
DEAN ENROLLMENT SERVICES
Reporting & Records Management

Colyn, Nell
PROGRAM MANAGER A
Outreach





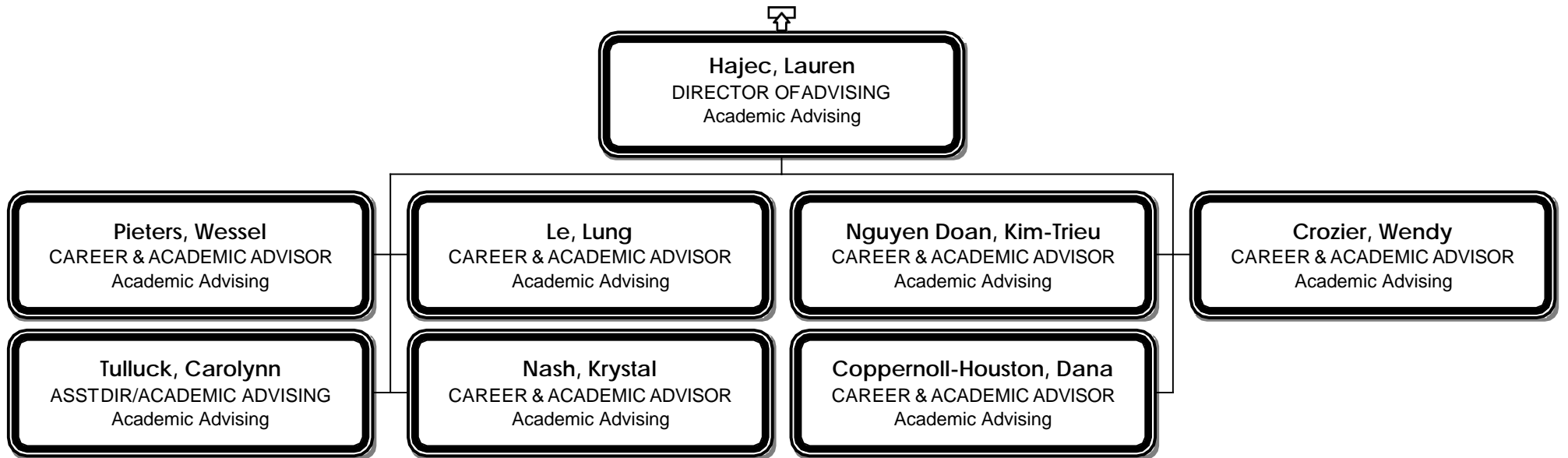




Heng, Kong
PROGRAM MANAGER A
Testing & Assessment Services

Ho, Yam
PROGRAM SPECIALIST 2
Testing & Assessment Services







Mallahan, Alicia
Interim Director Financial Aid
Financial Aid

Weedman, Amber
PROGRAM COORDINATOR
Financial Aid

Kim, Brian
PROGRAM SPECIALIST 2
Financial Aid

Olaso, Dane
PROGRAM COORDINATOR
Financial Aid

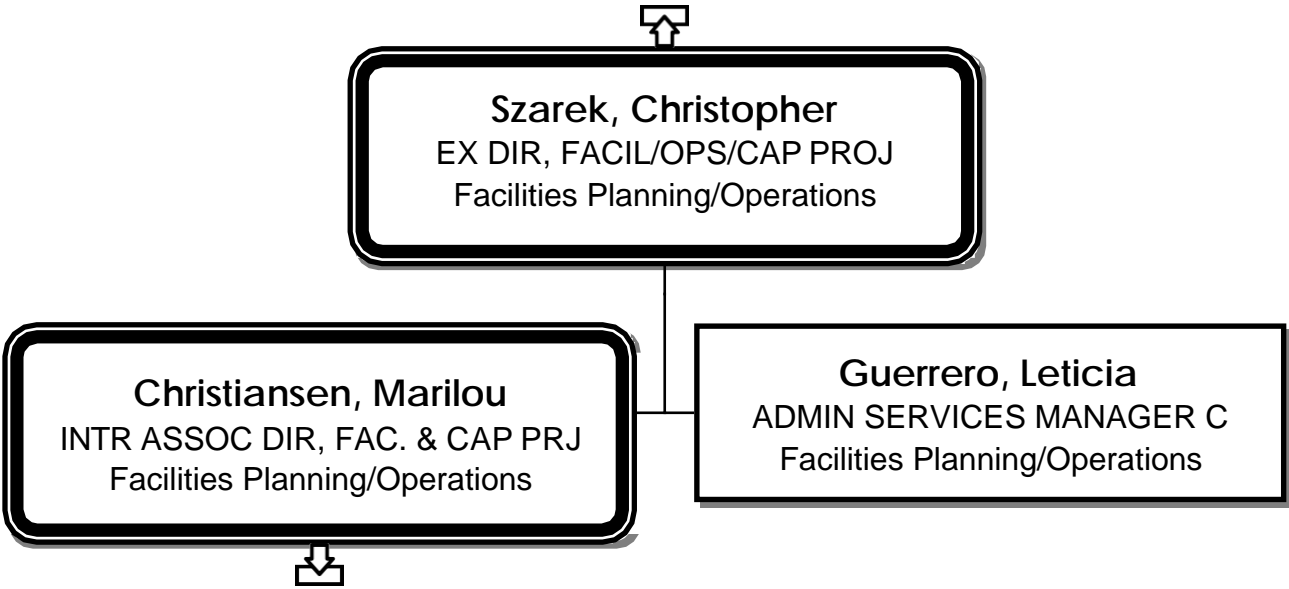
Hoff, Ella-Liessa
PROGRAM SPECIALIST 2
Financial Aid

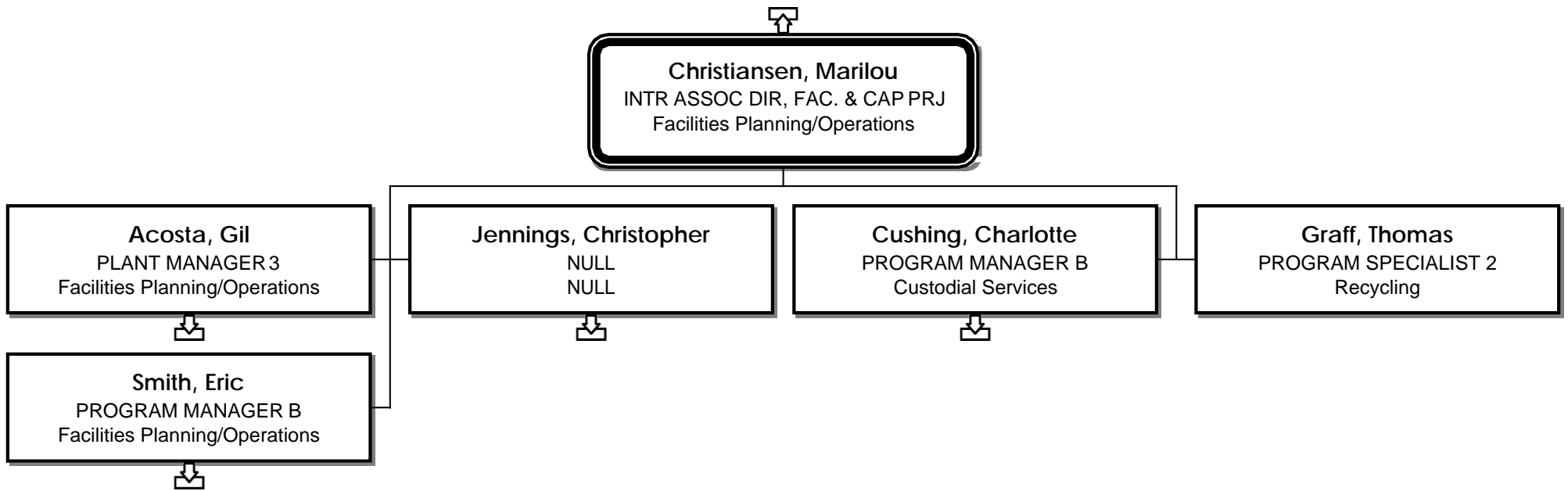
Witters, Mary
Fiscal Analyst 3
Financial Aid

Castejon Belandria, Linda
PROGRAM ASSISTANT
Financial Aid

Baker, Loren
PROGRAM MANAGER A
Financial Aid

Arpin, Kathryn
PROGRAM SPECIALIST 2
Financial Aid







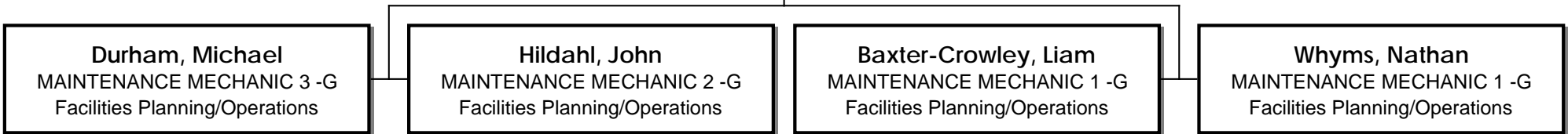
Acosta, Gil
PLANT MANAGER 3
Facilities Planning/Operations

Durham, Michael
MAINTENANCE MECHANIC 3 -G
Facilities Planning/Operations

Hildahl, John
MAINTENANCE MECHANIC 2 -G
Facilities Planning/Operations

Baxter-Crowley, Liam
MAINTENANCE MECHANIC 1 -G
Facilities Planning/Operations

Whyms, Nathan
MAINTENANCE MECHANIC 1 -G
Facilities Planning/Operations





Jennings, Christopher
NULL
NULL

Heng, Bunhor
CUSTODIAN 2
Custodial Services

Black, William
MAINTENANCE CUSTODIAN
Custodial Services

Waller, Jacquelynn
CUSTODIAN 2
Custodial Services

Mastikash, Olga
CUSTODIAN 2
Custodial Services

Pitman, Joseph
MAINTENANCE CUSTODIAN
Custodial Services

Bliss, Jadia
CUSTODIAN 2
Custodial Services

Laspina, Ruben
CUSTODIAN 2
Custodial Services

Cooper, Elmo
CUSTODIAN 2
Custodial Services

Savenkova, Irina
CUSTODIAN 2
Custodial Services

Bailey, Cheryl
CUSTODIAN 2
Custodial Services

Grissom, Jarockus
CUSTODIAN 2
Custodial Services

Koroleva, Lyubova
CUSTODIAN 2
Custodial Services

Smith, David
MAINTENANCE CUSTODIAN
Custodial Services

Klimets, Galina
CUSTODIAN 2
Custodial Services

Lokhmatov, Julia
CUSTODIAN 2
Custodial Services

Mach, Donny
CUSTODIAN 2
Custodial Services

Demise, Buzayehu
CUSTODIAN 2
Custodial Services

Kennon, Sapphire
CUSTODIAN 2
Custodial Services



Cushing, Charlotte
PROGRAM MANAGER B
Custodial Services



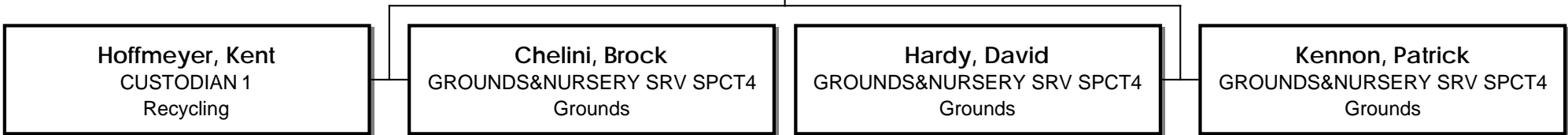
Smith, Eric
PROGRAM MANAGER B
Facilities Planning/Operations

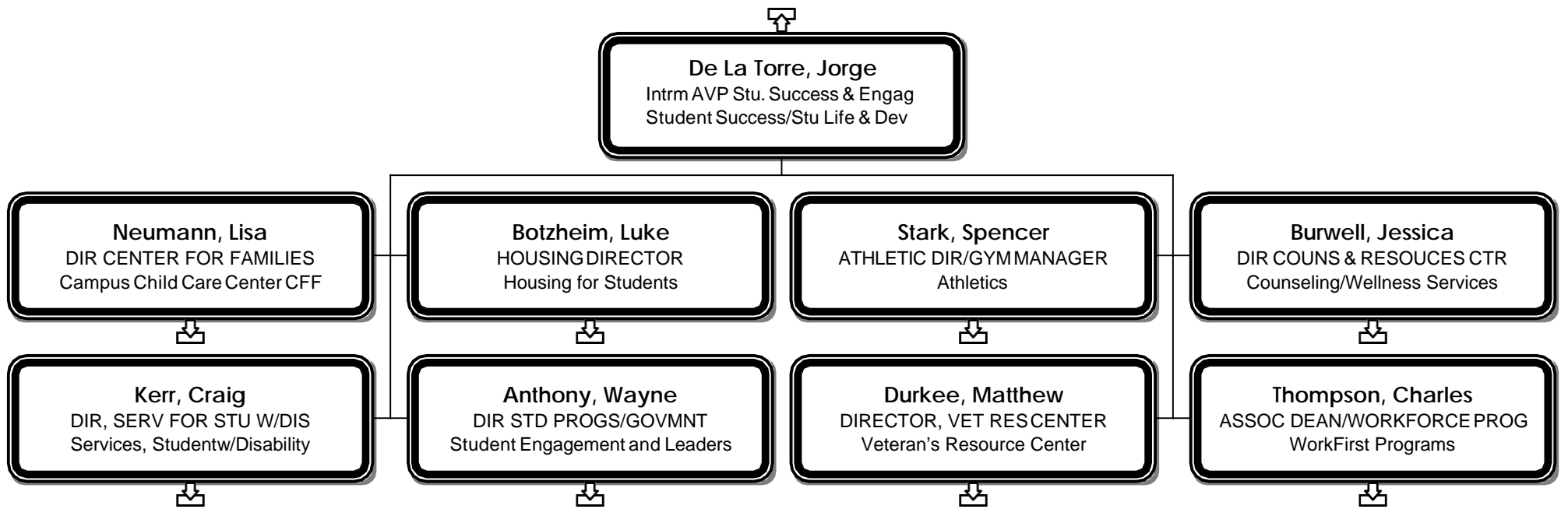
Hoffmeyer, Kent
CUSTODIAN 1
Recycling

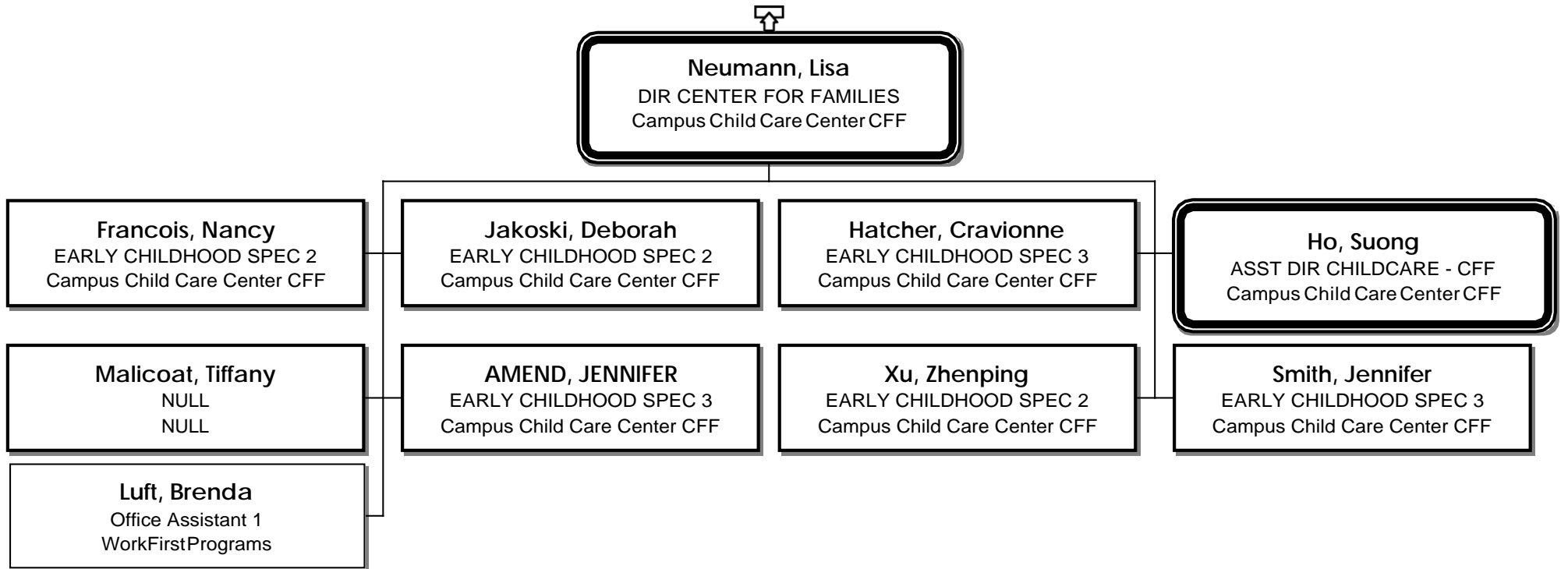
Chelini, Brock
GROUNDS&NURSERY SRV SPCT4
Grounds

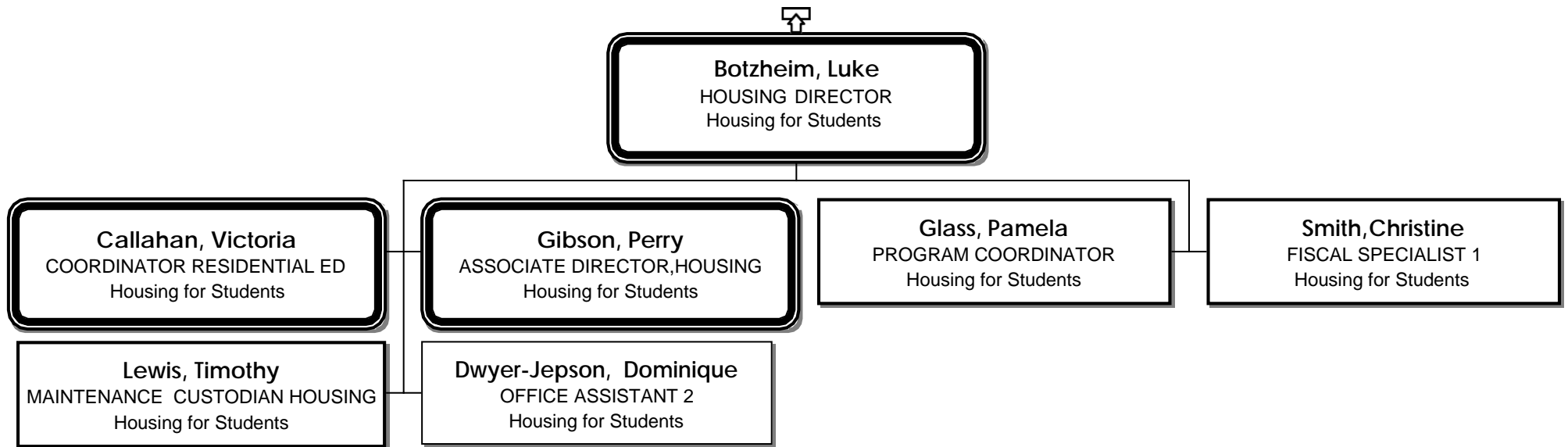
Hardy, David
GROUNDS&NURSERY SRV SPCT4
Grounds

Kenon, Patrick
GROUNDS&NURSERY SRV SPCT4
Grounds





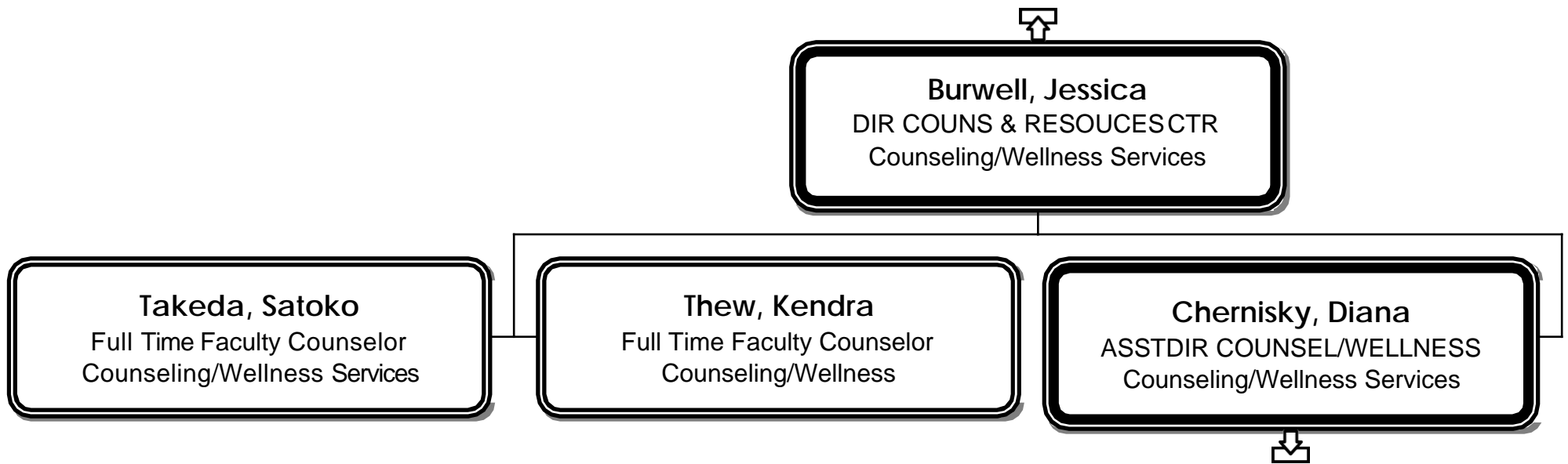






Stark, Spencer
ATHLETIC DIR/GYM MANAGER
Athletics

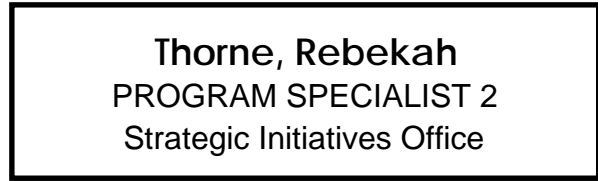
Johansen, Kimberly
ADMINISTRATIVE ASSISTANT 3
Athletics





Chernisky, Diana
ASSTDIR COUNSEL/WELLNESS
Counseling/Wellness Services

Thorne, Rebekah
PROGRAM SPECIALIST 2
Strategic Initiatives Office

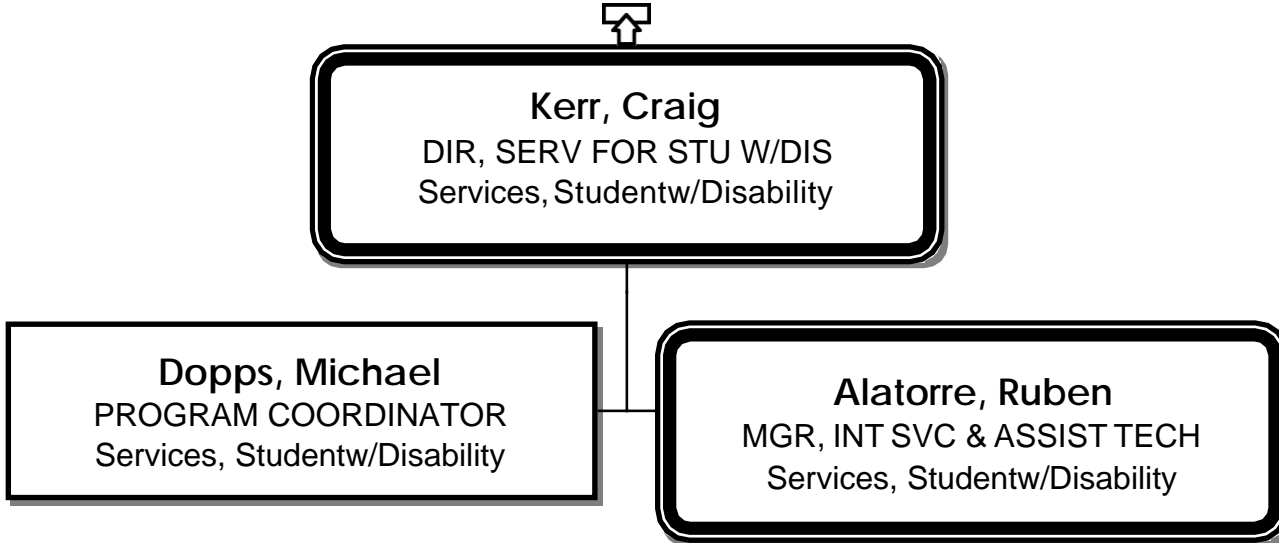


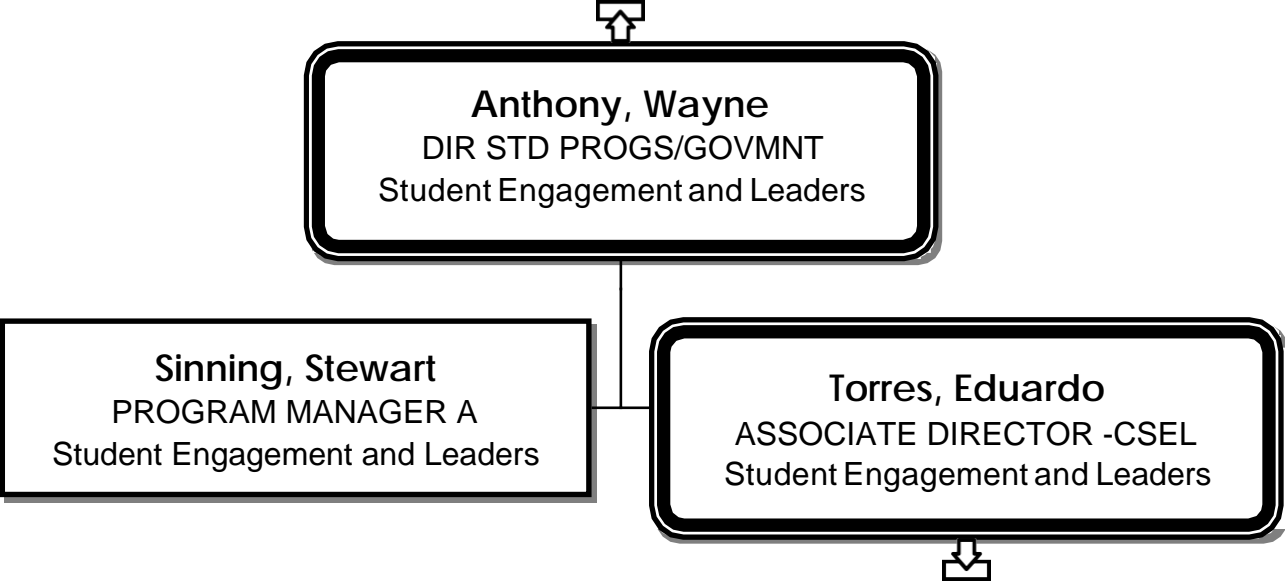


Kerr, Craig
DIR, SERV FOR STU W/DIS
Services, Studentw/Disability

Dopps, Michael
PROGRAM COORDINATOR
Services, Studentw/Disability

Alatorre, Ruben
MGR, INT SVC & ASSIST TECH
Services, Studentw/Disability







Torres, Eduardo
ASSOCIATE DIRECTOR -CSEL
Student Engagement and Leaders

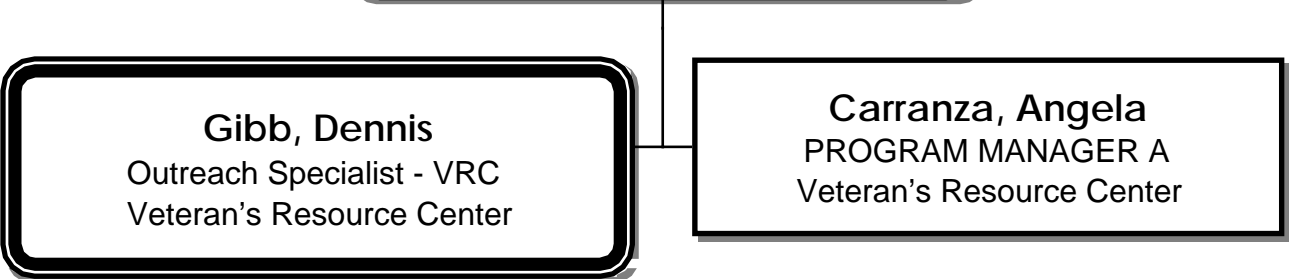
Merry, Emily
CURRICULUM ADVISOR
Student Engagement and Leaders

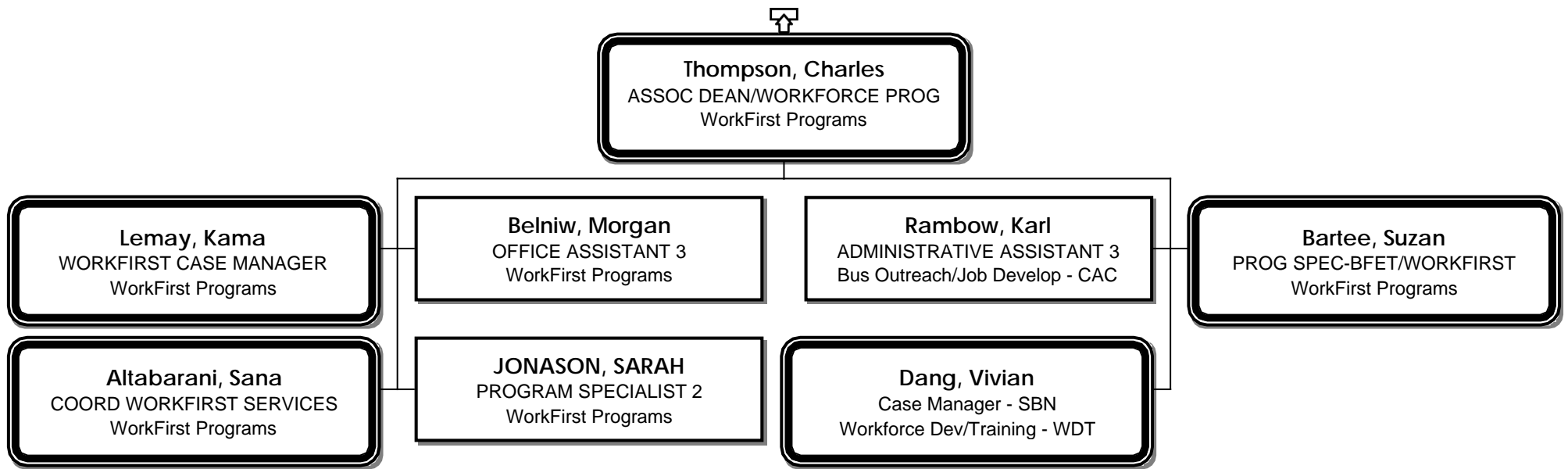


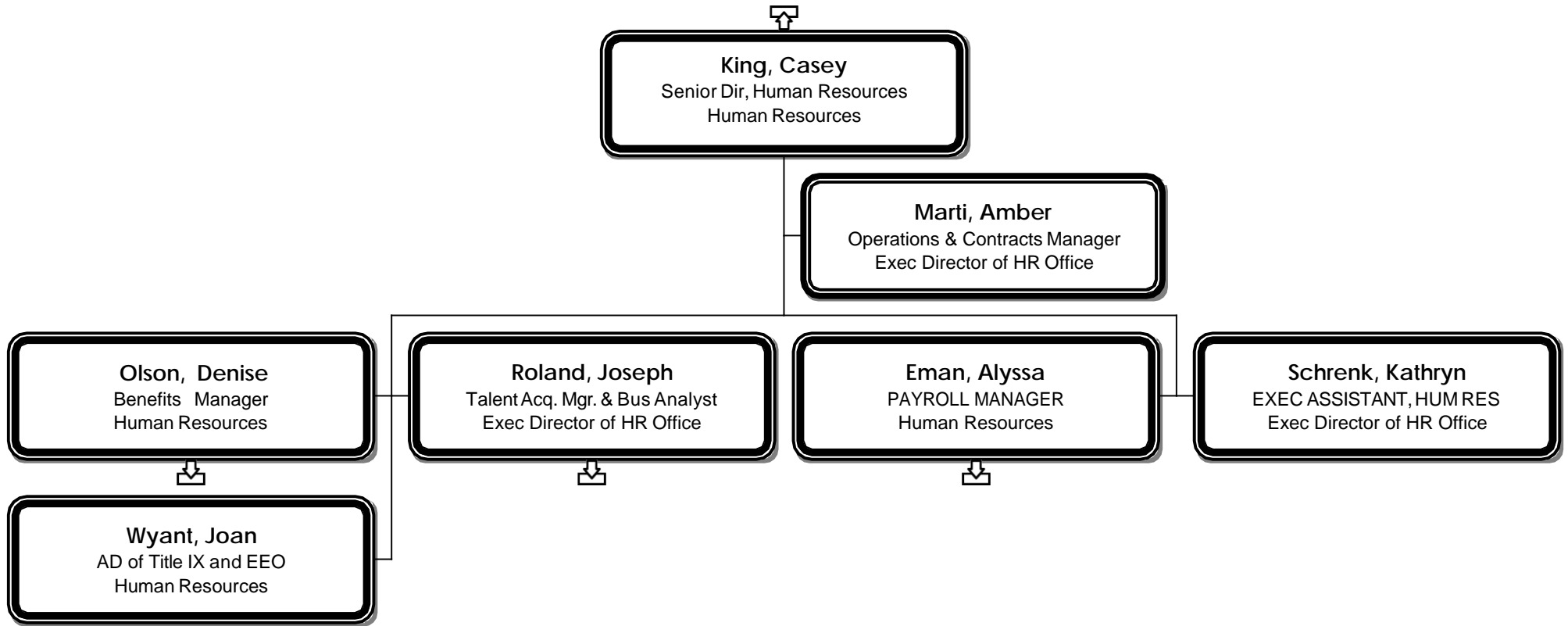
Durkee, Matthew
DIRECTOR, VET RES CENTER
Veteran's Resource Center

Gibb, Dennis
Outreach Specialist - VRC
Veteran's Resource Center

Carranza, Angela
PROGRAM MANAGER A
Veteran's Resource Center









Olson, Denise
Benefits Manager
Human Resources

HERNANDEZ, ALEJANDRO
HUMAN RESOURCE CONSULT 1
Human Resources



Roland, Joseph
Talent Acq. Mgr. & Bus Analyst
Exec Director of HR Office

Ngo, Thien
HUMAN RESOURCE CONSULT 2
Exec Director of HR Office

Gentry, Kathi
HUMAN RESOURCE CONSULT 3
Human Resources

Christenson, Avery
PROGRAM SPECIALIST 2
Organizational Dev/Training



Eman, Alyssa
PAYROLL MANAGER
Human Resources

Liu, Qianru
PAYROLL COORDINATOR
Human Resources

Mallahan, Dane
HUMAN RESOURCE CONSULT 2
Human Resources