

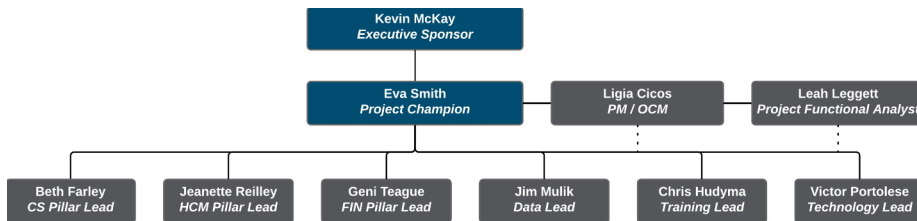
EDMONDS COMMUNITY COLLEGE ctcLink Cliffs Notes

Winter | Issue 2 | January 17, 2019

INITIATION PHASE



Meet the EDCC ctcLink Steering Committee:



Their role? They are responsible for the management and monitoring of the project. The Steering Committee approves working groups that will accomplish tasks to help realize the project and any changes that might incur along the way (timeline, resources, budget, etc.). They are accountable to the President's Leadership Team and Board of Trustees.

UPCOMING

- January 17, 2019
- Student Services ctcLink Update
- January 22, 2019
- SME Meeting 3:15-4:30pm, SNH 338
- January 29-30, 2019
- CS End of Term Common Process Workshop @ South Seattle College
- February 1, 2019
- Pre-College Div. ctcLink Update
- HHS Div. ctcLink Update
- February 7, 2019
- Board of Trustees ctcLink Study Session
- February 12, 2019
- International Ed. Div. ctcLink Update
- February 15, 2019
- STEM Div. ctcLink Update
- February 20, 2019
- ISS Div. ctcLink Update
- March 1, 2019
- Business Div. ctcLink Update

CHANCE₄CHANGE

All of us go through many changes at different times in our lives; when we are motivated and understand what the change entails, we are successful.

One way to accomplish this is to be involved in the process of change. This increases our level of commitment and engagement.

Research shows that we are not afraid of change, we are afraid of the unknown, meaning not having enough information about what's coming.

With ctcLink, we want to ensure that everyone understands the changes. Not sure? Please reach out and ask!

Have questions, comments, suggestions? Contact the ctcLink Project Team: ctclinkedmonds@edcc.edu

Project site:
<https://employees.edcc.edu/technology/ctclinkproject/>

"[ctcLink] It's easy. I love it. I'm excited. I can't wait. I want it now."
- Geni Teague, Director of Accounting

Speaking about her experience shadowing counterparts for a day at Tacoma CC.

PEOPLESPEAK

Much of the terminology from CEI+ will be updated in PeopleSoft to something our Project Team refers to as PEOPLESPEAK. This section will highlight a few key words each month.

EMPLID - A single identification number for each person record, regardless of whether the person is a student, staff, and/or faculty. Even if a person has multiple roles at multiple institutions, they will still have one ID. This replaces the current SID.

Fluid - The new 9.2 interface upgrade in PeopleSoft which is mobile, intuitive, and effective. It supports all platforms that have a browser (computer, tablet, phone, etc). Pilot colleges will be implementing this upgrade alongside Deployment Group 2.

Service Indicators - Basically today's UA Codes. They are codes that when placed on an account can have positive or punitive actions.

SME - A Subject-Matter Expert or domain expert is a person who is an authority in a particular area or topic, with special knowledge or skills in that area.

Session - Time elements that subdivide a **term** into multiple time periods during which classes are offered.

Term - Generic word for semester or quarter.

PLANNING FOR THE FUTURE



Planning Ahead Brings Big Benefits

Effective planning for the future can add significant value to Edmonds Community College's bottom line. The key to effective planning is having a solid foundation to build on - a challenge for EDCC with our tools and processes in place today.

That's why, with ctclink / PeopleSoft, we are replacing our outdated CEI Plus with the latest cloud-based enterprise planning platform from Oracle.

The project work and activities involve multiple stakeholders and multi department representation. Once completed, the implementation of ctclink will enable better cross-departmental communication and collaboration to support student success.

The key areas that will experience improvements and added efficiency are:

For Students: admissions, registration, degree audit, advising, financial aid, tuition and fee payment, and workflow technology.

For faculty and staff: student records, streamlined grading and advising processes, room scheduling, tuition and financial aid processing, advising, student tracking, enrollment reporting, transcripts, state and federal reporting, accounts receivable/payable, payroll, purchasing, employee recruitment tools, benefits administration and other human resource management processes and workflow technology.

Stay tuned for project activities, informational meetings, monthly newsletters to follow, and be ready to be engaged as we continue to chart our course for operational excellence.

HIGHLIGHTS

How will ctclink affect staff?

Staff who currently do their work through FAM (Financial Management) and SMS (Student Management System) will transition to PeopleSoft Campus Solutions (CS). Staff who currently use FMS (Financial Management System) will transition to PeopleSoft Finance (FIN). Staff who currently do their work through PPMS (Personnel & Payroll Management System) will transition to PeopleSoft Human Capital Management (HCM).

Don't currently use FAM, SMS, FMS, or PPMS to do your work? Don't worry, you won't be left out!

Applications such as TLR (Time & Leave Reporting) will also be replaced by PeopleSoft. This means that you will log in with your EMPLID (Employee ID) to report leave, view your earnings, and handle other payroll-related functions.

PAVING THE PATH

Degree Pathways and ctclink

Workshops jointly sponsored by SBCTC's Student Success Center and the ctclink Project are being planned. The goal is to achieve two broad objectives:

1. Build a holistic set of functional requirements to enable colleges to implement Guided Pathways.
2. Compare those functional requirements to systems already purchased and configured by SBCTC as part of ctclink.

The outcome of these workshops will be a common Guided Pathways process with embedded functional requirements, and a determination of which requirements are met through ctclink and which are not. The results from this work will be an input into SBCTC's Strategic Technology Committee, and will be the framework for conversations around SBCTC core technologies.

